

Marsham Street, SW1P

£775 Per week

This is a stunning two bedroom, two bathroom property in the centre of Westminster offers fantastic views of the historic gardens. St Johns Building includes 24 hour concierge, underground parking, gym, pool and sauna.

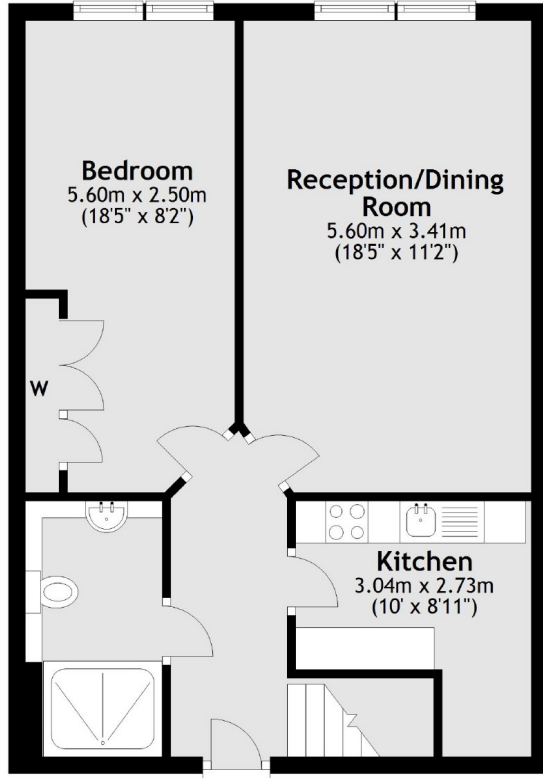
St Johns Building was developed in to a high end private residence during the early 2000's. It's location is great for getting to and from the city with ease, as well as a short walk from the river Thames.

Features

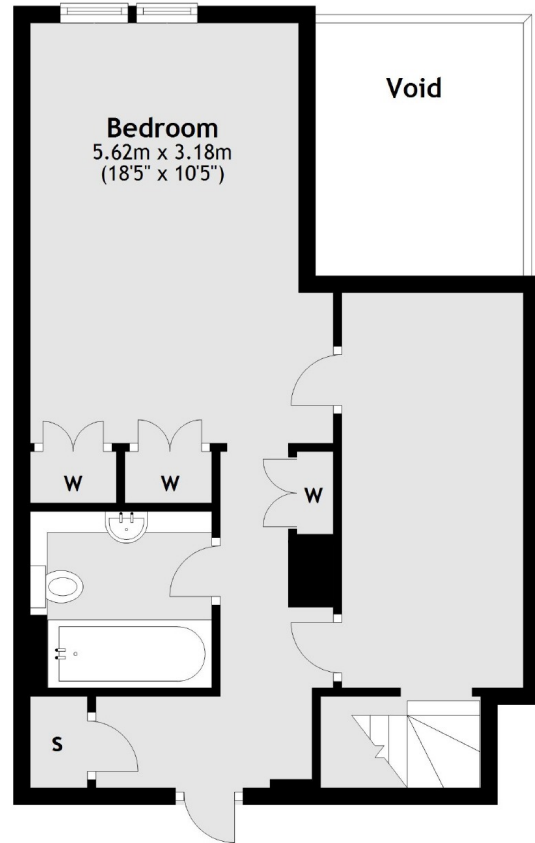
- Two Bedrooms
- Two Bathrooms
- Underground Parking
- Mezzanine
- 24 Hour Portage
- Gym and Pool

Marsham Street, London, SW1P

First Floor



First Floor



Total area: approx. 103.8 sq. metres (1116.9 sq. feet)