



Belgrave Road, SW1V

£484 Per week

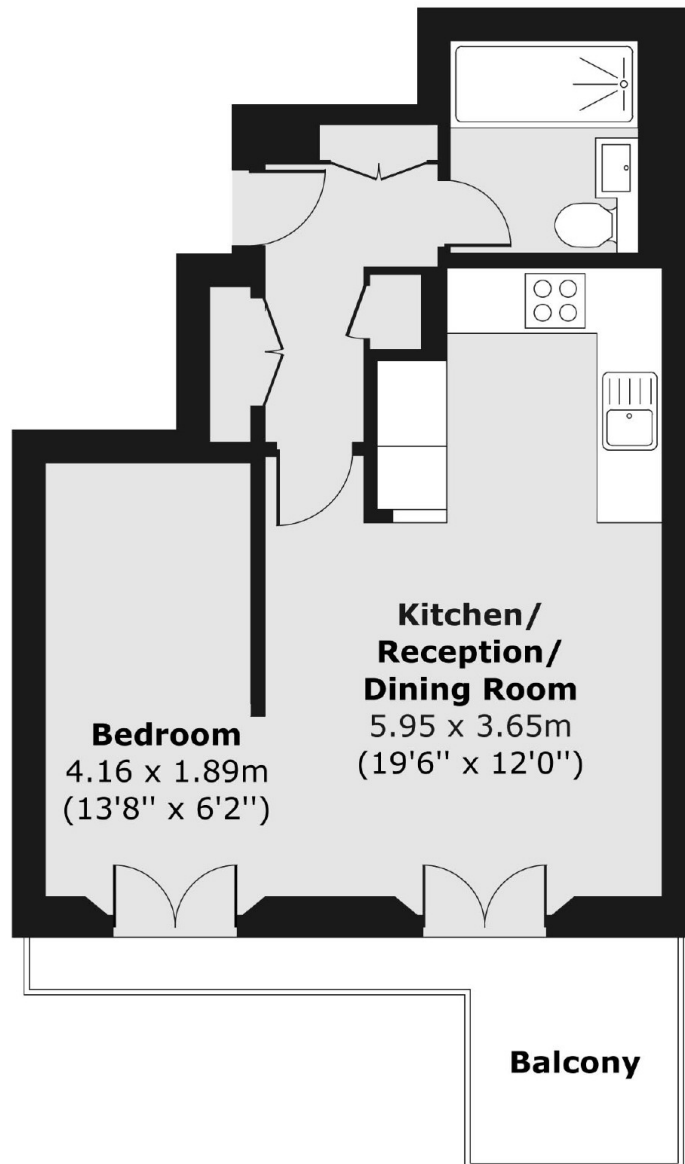
A bright one double bedroom apartment on the first floor a period conversion in the Pimlico grid. Reception room with wood floors, high ceiling and balcony, open plan kitchen, double bedroom and bathroom. An ideal home for a couple or single professional.

This flat is in the middle of Belgrave Road so residents are surrounded by the boutique cafés and restaurants in the popular Pimlico grid, Warwick Way and Churton Street

Features

- One Bedroom
- Modern Interior
- Private Balcony
- Open Plan
- Close to Tube
- Furnished

Belgrave Road, London, SW1V



Total area (approx.) 36.15 sq. m (389 sq. ft)
Balcony area (approx.) 5.92 sq. m (64 sq. ft)