



## Churchill Gardens, SW1V

£525 Per week

This large split level two bedroom, two bathroom property has been finished to an immaculate standard. With a fully functional separate kitchen and private balcony the property is perfect for either couples, families or sharers looking for a good size well proportioned place to live.

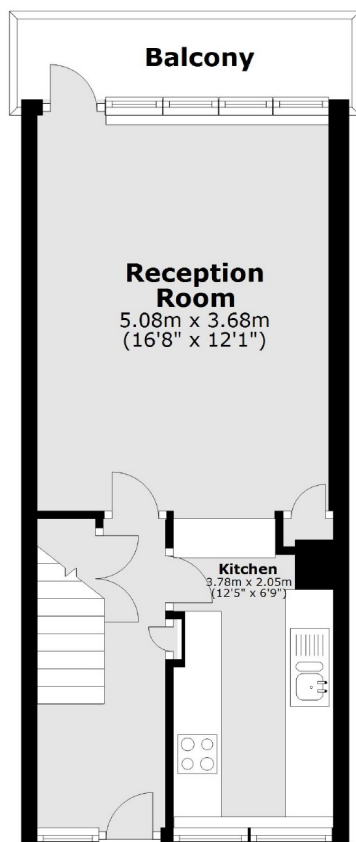
Churchill Gardens is a conservation area and Sullivan House a listed building and is kept in very good condition. It is only a short walk to the shopping areas in Pimlico, Sloane Square and Victoria, as well as being in a great position by the river.

### Features

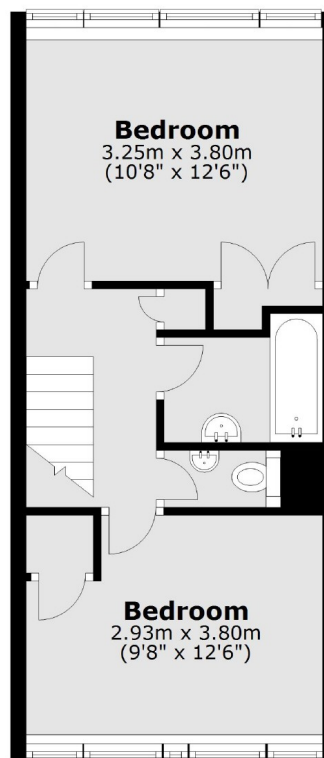
- Two Double Bedrooms
- Ample Storage
- Split Level
- Wooden Floors Throughout
- Private Balcony
- Large Separate Kitchen
- Bright And Spacious

# Churchill Gardens, London, SW1V

## Second Floor



## Third Floor



Main area: Approx. 69.7 sq. metres (749.8 sq. feet)  
Plus balconies, approx. 4.9 sq. metres (52.5 sq. feet)