



Churchill Gardens, SW1V

£623 Per week

A recently refurbished fifth floor two double bedroom, two bath apartment (with lift and balcony) in a purpose built residential block in Pimlico, SW1 with views of the River Thames

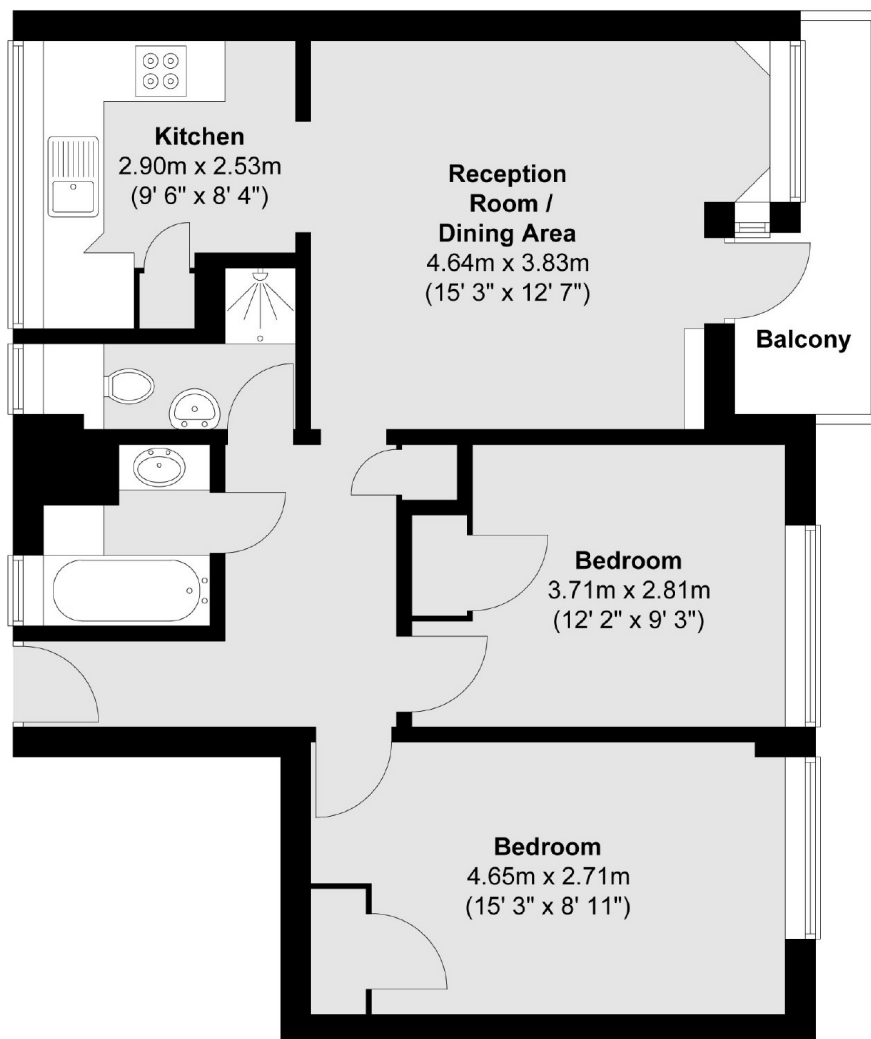
Churchill Gardens is a conservation area and Sullivan House a listed building and is kept in very good condition. It is only a short walk to the shopping areas in Pimlico, Sloane Square and Victoria, as well as being in a great position by the river.

Features

Recently Refurbished
Two Double Bedrooms
Fifth Floor With Lift
Views Across London
Separate Kitchen
Wood Floors In Reception

Churchill Gardens, London, SW1V

Fifth Floor



Total area (approx.) : 61.5 sq. m (662 sq. ft)
Total balcony area (approx.) : 3.8 sq. m (41 sq. ft)