



## Strutton Ground, SW1P

£623 Per week

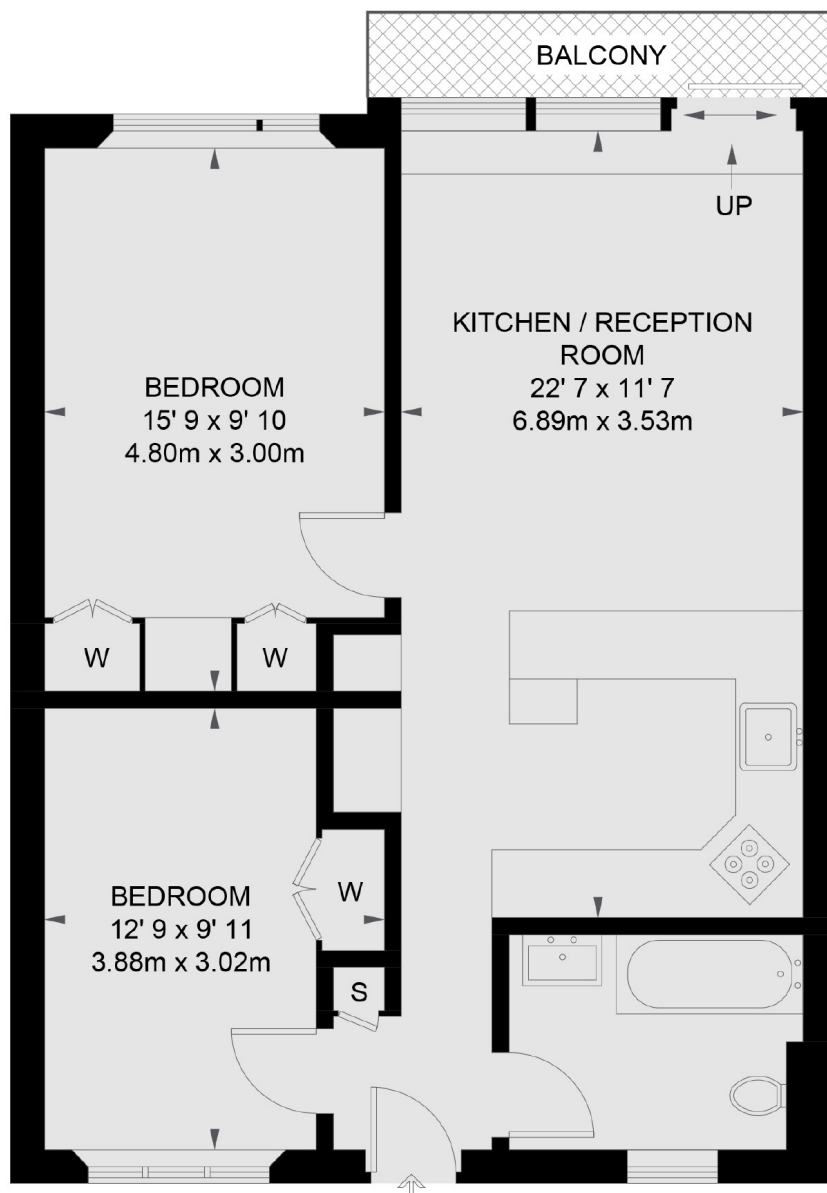
A light and bright, two bedroom, third floor apartment with a private balcony, within a modern style block located in the market street of Strutton Ground.

Transport links are excellent with St James's Park tube and Victoria tube, mainline station and bus terminal close by together with an abundance of shops and restaurants in nearby Victoria Street.

### Features

- Balcony
- Third Floor
- Lift
- Two Double Bedrooms
- Close Transport Links
- Central Location

# Strutton Ground, London, SW1P



## THIRD FLOOR

TOTAL APPROX. FLOOR AREA 669 SQ. FT. (62.2 SQ. M.)  
TOTAL APPROX. BALCONY AREA 34 SQ. FT. (3.2 SQ. M.)