



## Sutherland Street, SW1V

£623 Per week

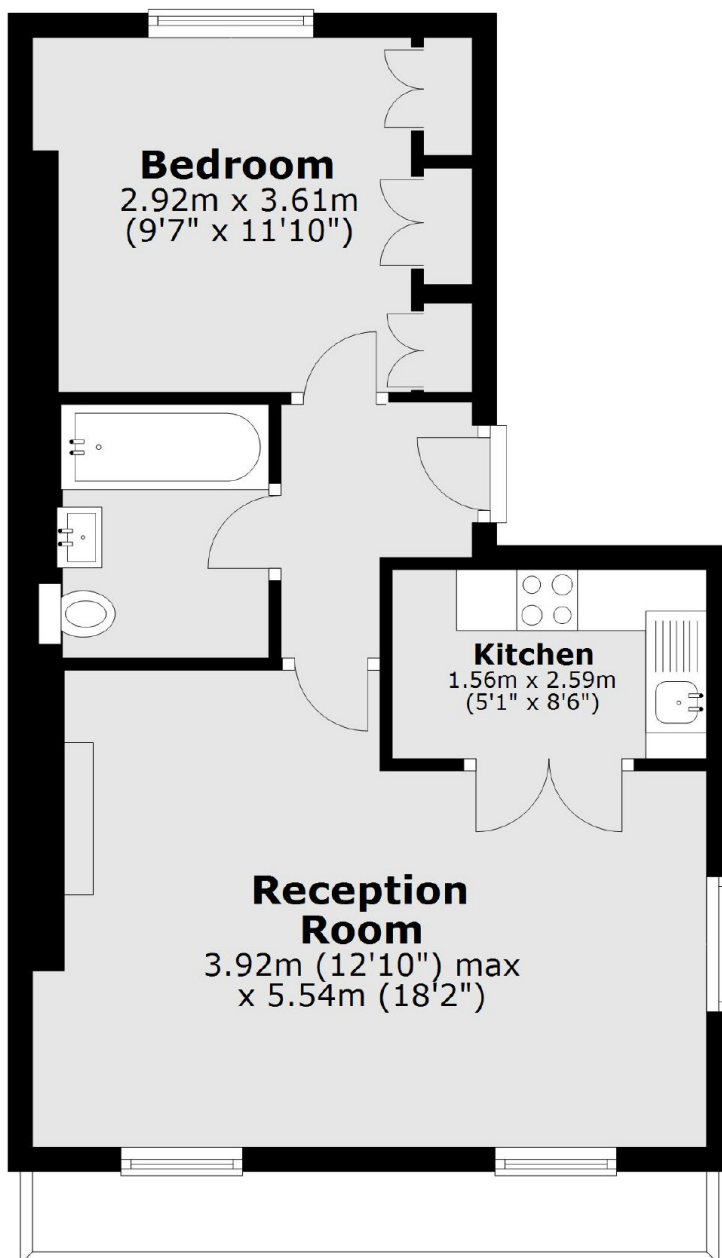
A spacious recently refurbished one bedroom apartment on the first floor of a Victorian stucco fronted conversion with private balcony, open plan kitchen and modern finish.

Sutherland Street is well situated for access in and out of central London. There are local shops only minutes away on Warwick Way and Lupus Street, as well as being very close to the shopping in Sloane Square and Victoria. The closest tube is Pimlico and Victoria is less than a 10 minute walk

### Features

- Recently Refurbished
- One Double Bedroom
- First Floor Apartment
- Ample Storage
- Balcony
- High Ceilings

# Sutherland Street, London, SW1V



Total area: approx. 42.1 sq. metres (453.2 sq. feet)