



## Gatliff Road, SW1W

£750 Per week

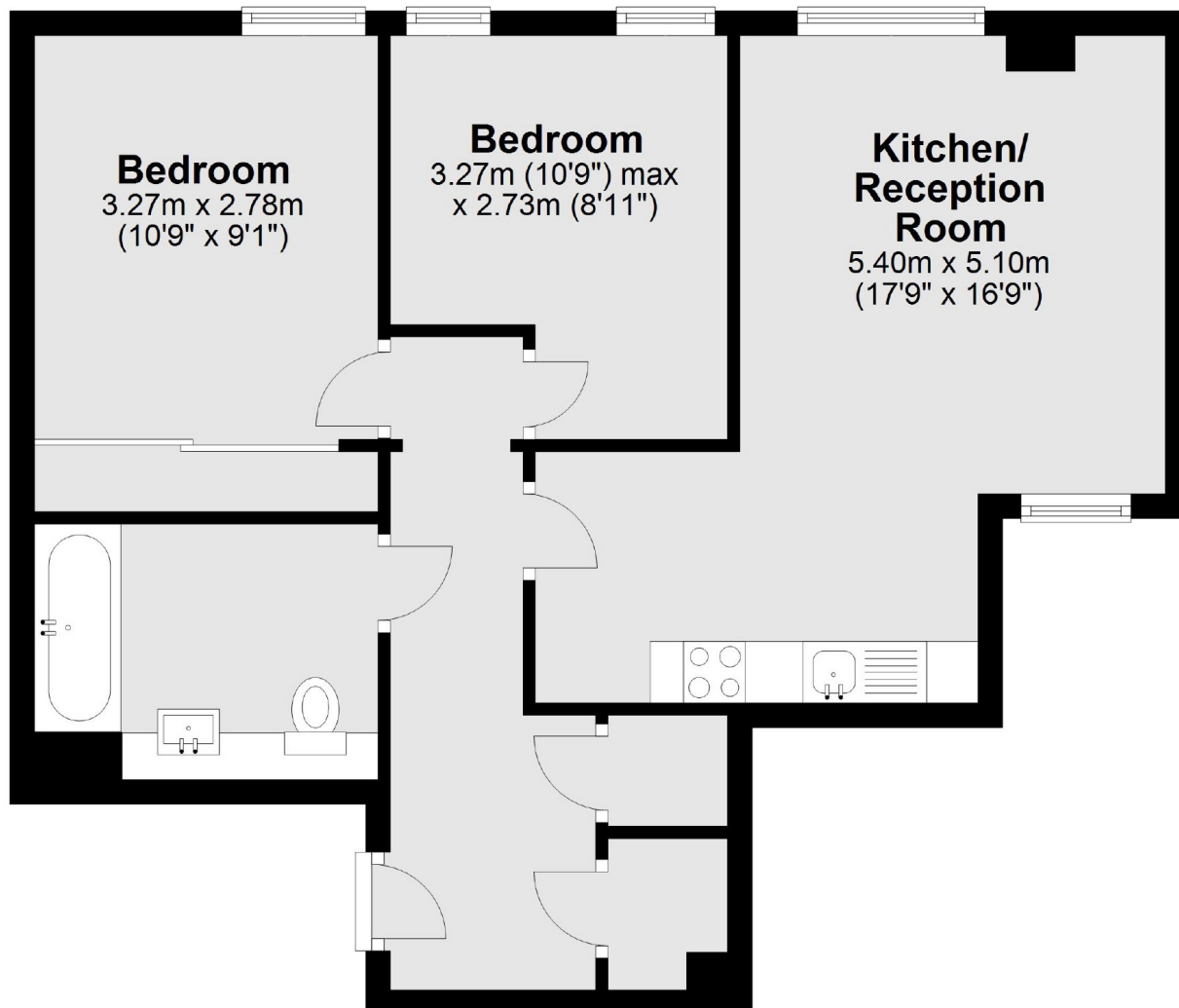
A modern two double bedroom apartment in a 24 hour portered development. Bright reception room with wood floors, modern open plan kitchen, two double bedrooms and refurbished bathroom. Good storage throughout

Grosvenor Waterside is ideally located within walking distance of Sloane Square and the very popular Kings Road, the property is also walking distance of Victoria Coach, Tube and Train Stations.

### Features

- Two Double Bedrooms
- Ground Floor Apartment
- Wood Floors In Reception
- Modern Open Plan Kitchen
- 24 Hour Porter Service
- Gated Development

# Gatliff Road, London, SW1W



Total area: approx. 54.9 sq. metres (591.5 sq. feet)