

Gatliff Road, SW1W

£750 Per week

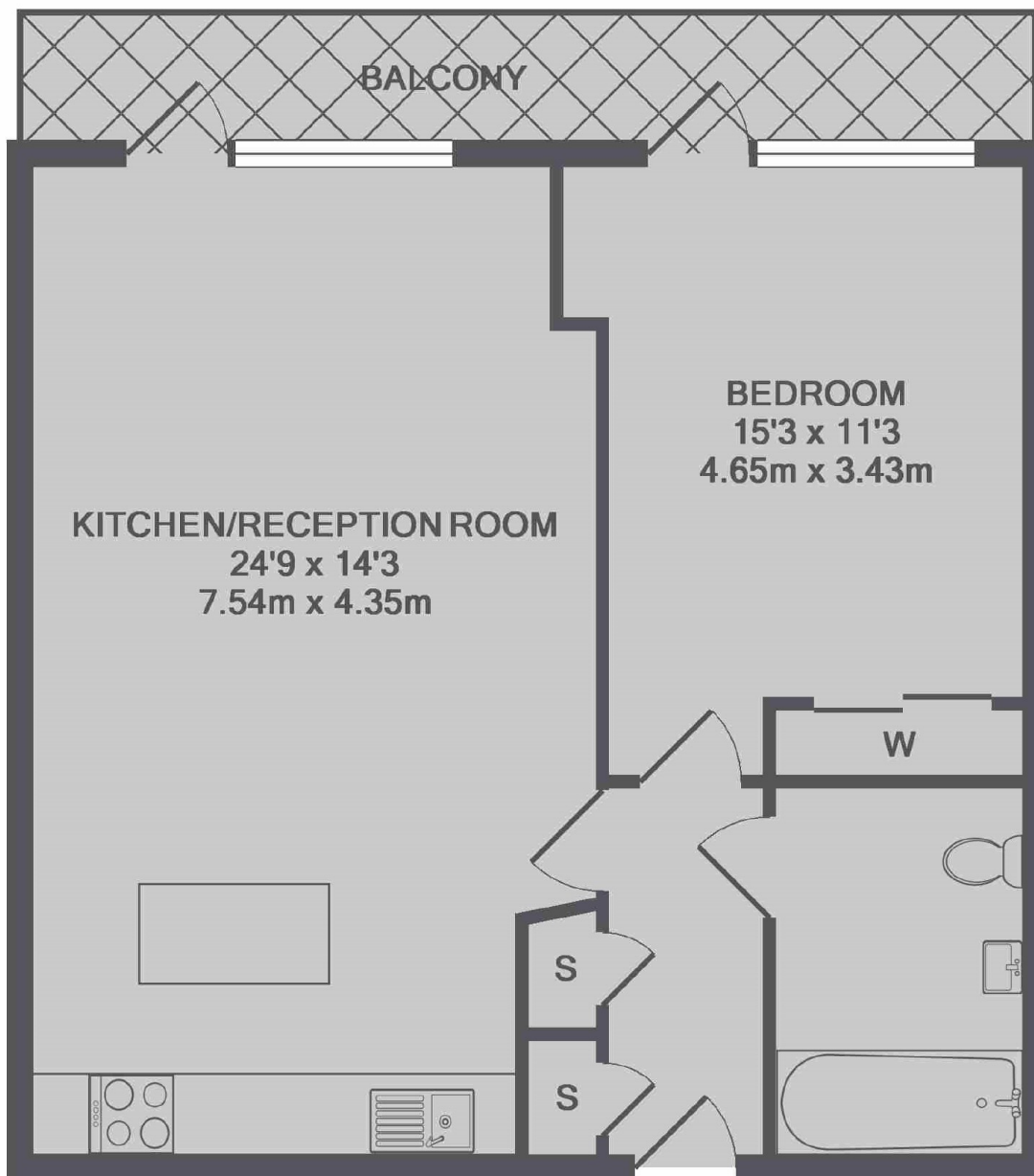
This modern and spacious (approximately 645sq ft) 5th floor one bed apartment has wood floors and two balconies, both overlooking the River Thames and Chelsea Bridge.

Grosvenor Waterside is ideally located within walking distance of Sloane Square and the very popular Kings Road, the property is also walking distance of Victoria Coach, Tube and Train Stations.

Features

- One Bedroom
- New Build
- 24 Hour concierge
- River Views
- Two Private Balconies
- Gym

Gatliff Road, London, SW1W



TOTAL APPROX. FLOOR AREA 613 SQ.FT. (56.9 SQ.M.)

Dexters

Pimlico
42 Denbigh Street
London
SW1V 2ER
Lettings
020 7976 5200

Energy Rating: B. We aim to make our particulars both accurate and reliable. However they are not guaranteed; nor do they form part of an offer or contract. If you require clarification on any points then please contact us, especially if you're traveling some distance to view. Please note that appliances and heating systems have not been tested and therefore no warranties can be given as to their good working order.

 **RICS** | Regulated
Estate Agent
and Letting Agent

dexters.co.uk