



Sutherland Street, SW1V

£575 Per week

A recently refurbished two double bedroom apartment arranged over the raised ground floor of a Victorian conversion with open plan reception and wood floors throughout.

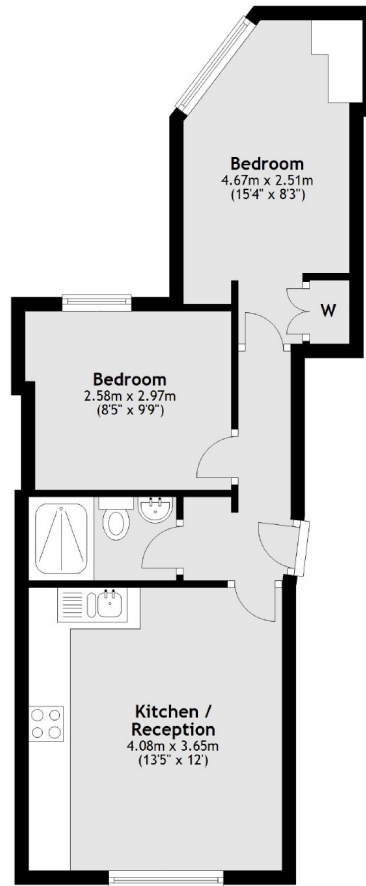
Sutherland Street is well situated for access in and out of central London. There are local shops only minutes away on Warwick Way and Lupus Street, as well as being very close to the shopping in Sloane Square and Victoria. The closest tube is Pimlico and Victoria is less than a 10 minute walk

Features

- Two Double Bedrooms
- Ground Floor
- Wood Floors
- Modern Interior
- Open Plan Reception
- Pimlico and Victoria

Sutherland Street, London, SW1V

Ground Floor



Total area: approx. 39.7 sq. metres (426.9 sq. feet)