



## Gatliff Road, SW1W

£650 Per week

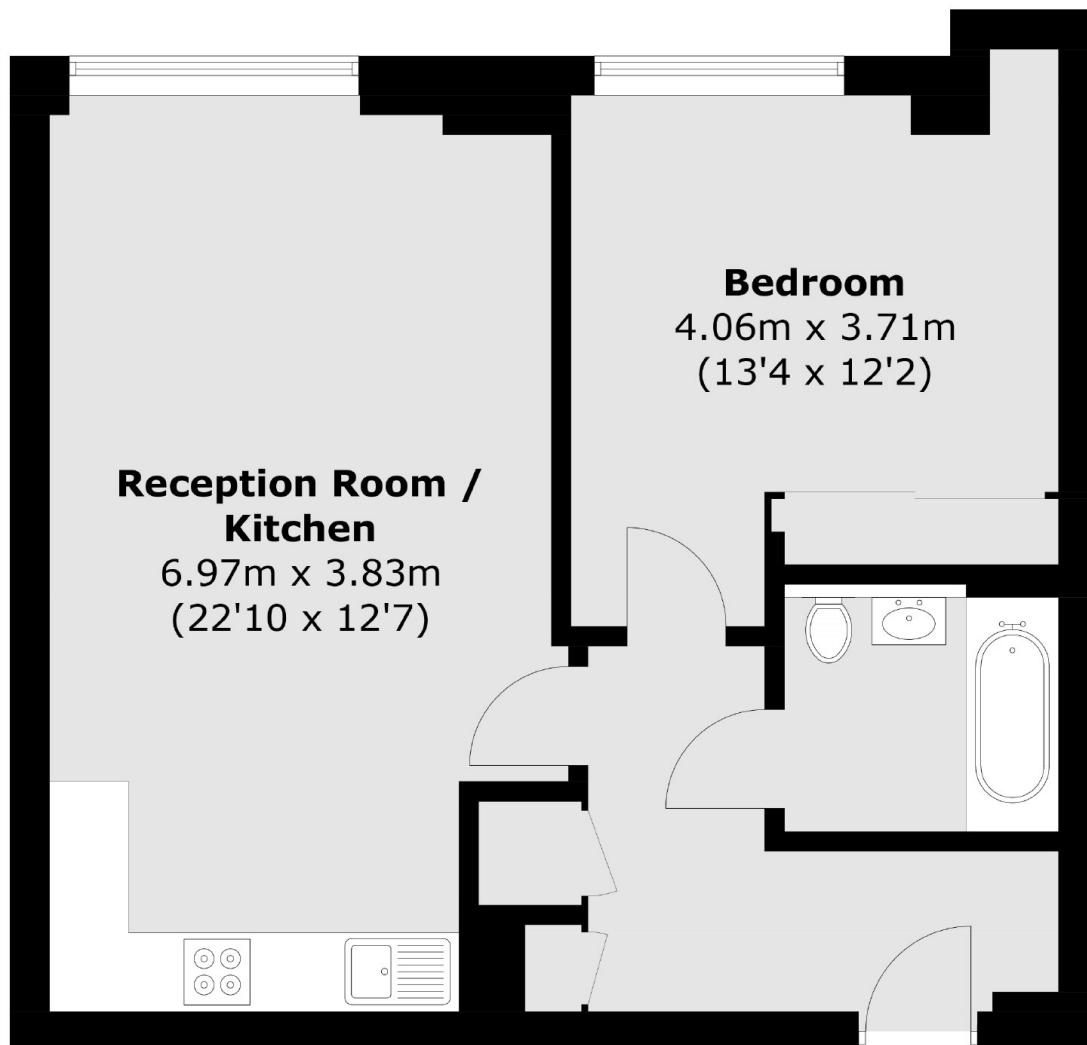
A refurbished one double bedroom apartment on the second of a purpose built block in the Grosvenor Waterside development. Bright reception room with open plan kitchen, good size double bedroom with built in storage and modern bathroom with shower over bath.

Grosvenor Waterside is a secure luxury riverside development with Sloane Square nearby, not to mention the exciting Kings Road. You are also opposite Battersea Park.

### Features

- Recently Refurbished
- One Double Bedroom
- Second Floor Apartment
- Concierge Service
- Wood Floors Throughout
- On Site Gym Access

**Gatliff Road,  
London, SW1W**



Total area (approx.): 53.7 sq. m (578.0 sq. ft)