

Gloucester Street, SW1V

£623 Per week

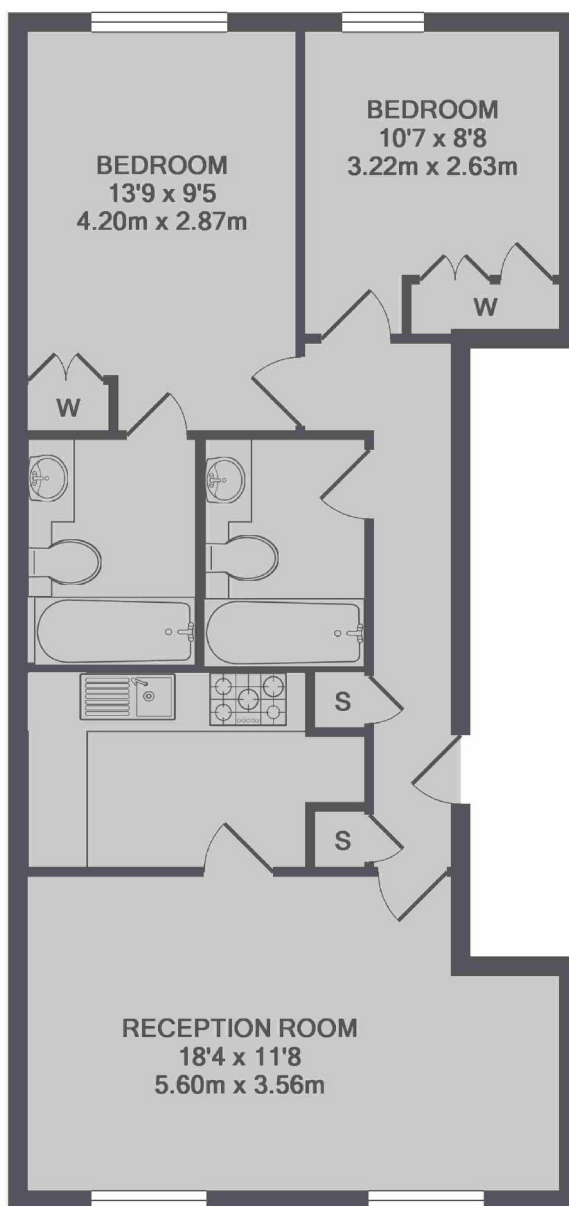
A two bedroom, two bathroom apartment on the third floor with lift. Bright reception room, separate kitchen, master bedroom with en suite bathroom, second double bedroom and second bathroom. Ideal home for two professional sharers, a couple or small family. The building has an additional bonus of a residential porter.

Gloucester Street is in the Pimlico Grid, surrounded by boutique cafes and restaurants and only a short walk to Victoria, Sloane Square and Westminster, perfect for central London commuters!

Features

- Two Double Bedrooms
- Two Bathrooms
- Third Floor Apartment
- Lift
- Residential Porter
- Great Location

Gloucester Street, London, SW1V



TOTAL APPROX. FLOOR AREA 647 SQ.FT. (60.1 SQ.M.)