



Old Pye Street, SW1P

£550 Per week

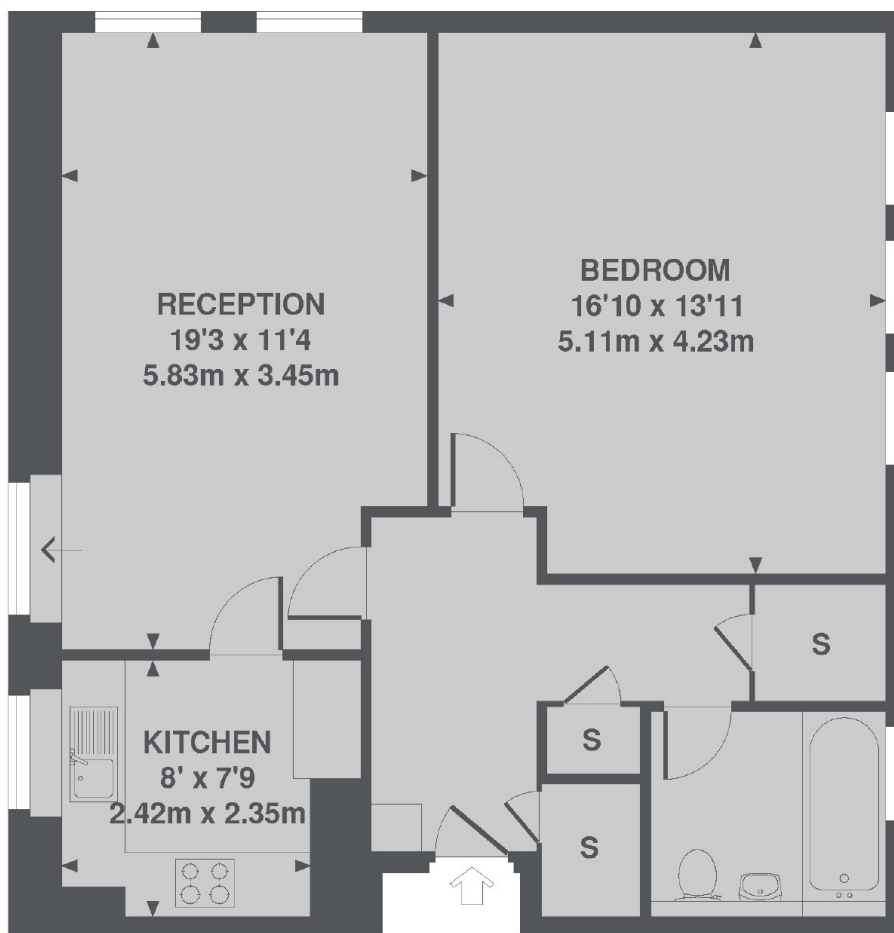
A large and spacious, well presented raised ground floor one double bedroom apartment with wood floors and plenty of storage throughout. The property is situated in a secure contemporary apartment building and the accommodation comprises a generous double bedroom with ample storage, reception room leading on to a separate kitchen and family bathroom.

Old Pye Street is ideally just off Victoria Street which offers a Curzon cinema, the Cardinal Shopping Centre and a House of Fraser department store. The property is within a mile of St Jame's Park station.

Features

- Large Apartment
- One Double Bedroom
- Wood Floors Throughout
- Reception Room
- Separate Kitchen
- Secure building

Old Pye Street, London, SW1P



GROUND FLOOR

TOTAL APPROX. FLOOR AREA 682 SQ. FT. (63.4 SQ. M.)