

Marsham Street, SW1P

£1,500 Per week

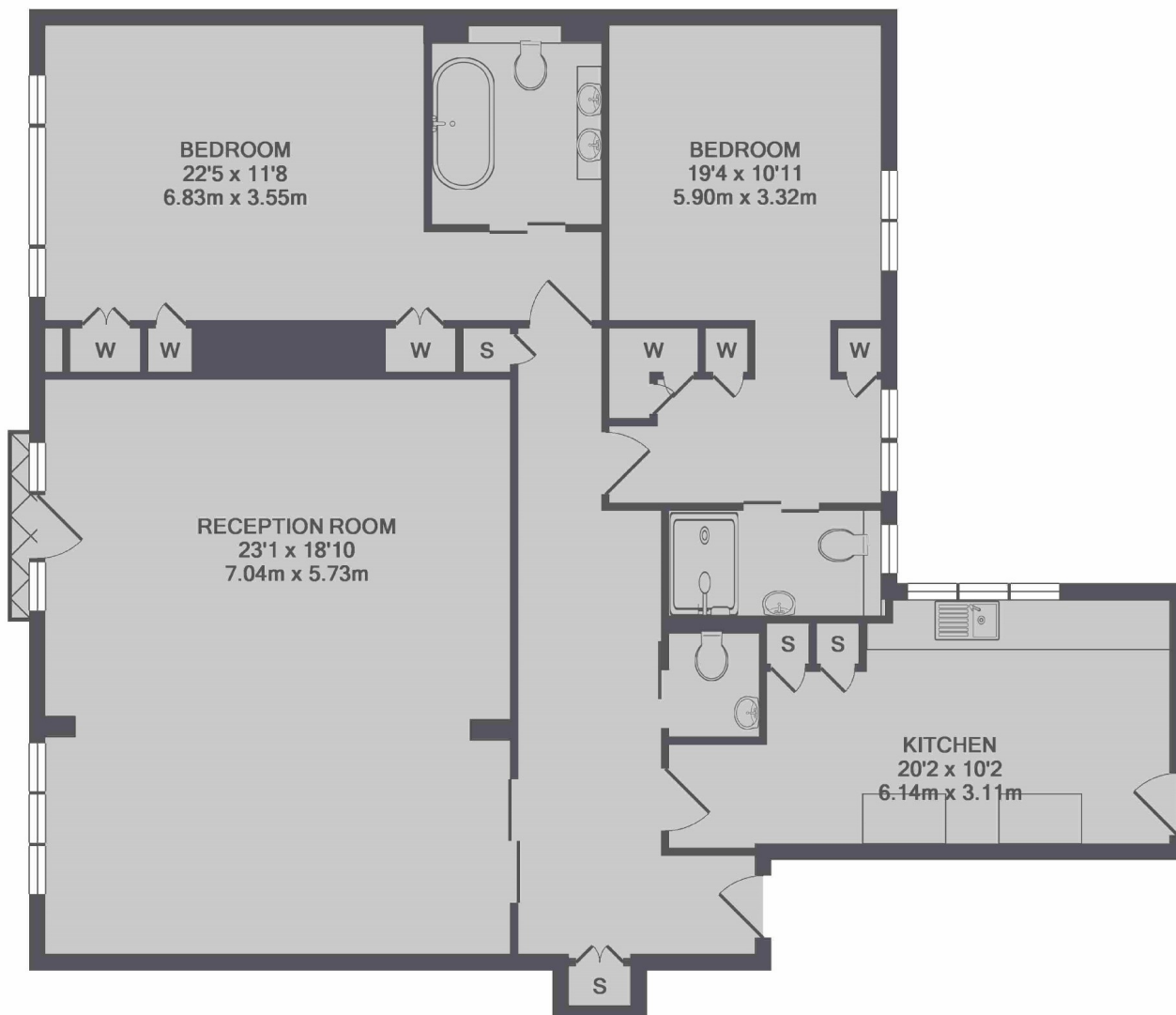
A well lit and bright apartment in a sought-after block in the heart of Westminster. This apartment has been refurbished to an extremely high standard and boast two double bedrooms and two bathrooms.

Westminster Gardens is ideally located for transport links, furthermore the property is within easy reach of the embankment and the wide variety of shops, bars and restaurants that Westminster and Victoria have to offer.

Features

- Two Double Bedrooms
- Fifth Floor Flat
- Smallbone Kitchen
- 24-hr Concierge
- Residents Roof Garden
- Excellent Storage

Marsham Street, London, SW1P



TOTAL APPROX. FLOOR AREA 1361 SQ.FT. (126.5 SQ.M.)