



## Ashburnham Mews, SW1P

£750 Per week

Located in a discrete gated mews, this two bedroom, two bathroom apartment is finished to an impeccable standard throughout and benefits from contemporary design style, wood floors, generous storage and under floor heating. An ideal home for two professional sharers, a couple or small family.

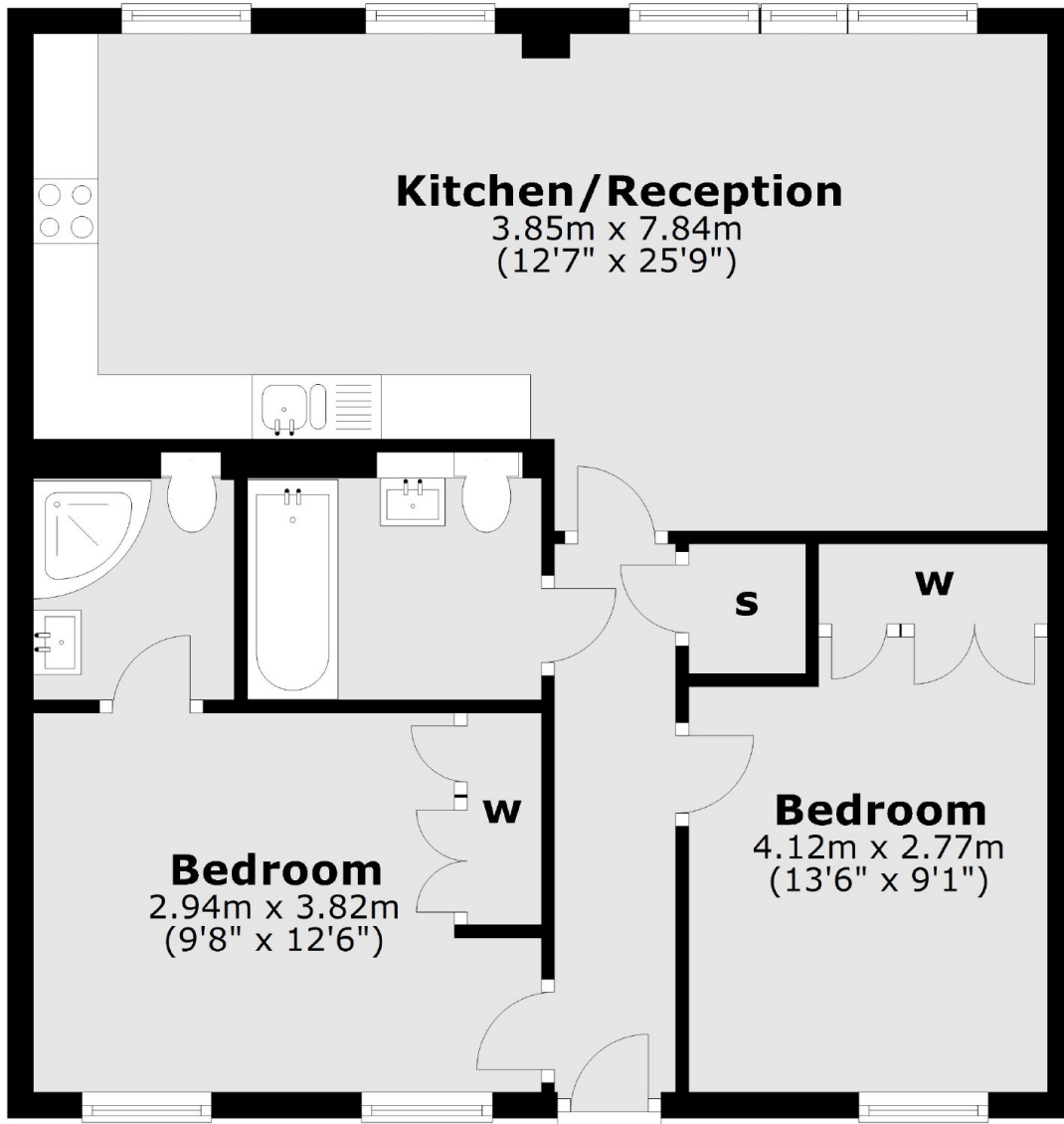
Ashburnham Mews is a beautifully discreet development in the centre Westminster. The area includes some of London's most iconic landmarks, yet retains a surprisingly village like atmosphere.

### Features

- Two Double Bedrooms
- Two Bathrooms
- Second Floor Apartment
- Lift
- Wood Floors
- Open Plan Modern Kitchen

**Ashburnham Mews,  
London, SW1P**

**Second Floor**



Total area: approx. 64.2 sq. metres (691.1 sq. feet)