



Marsham Street, SW1P

£600 Per week

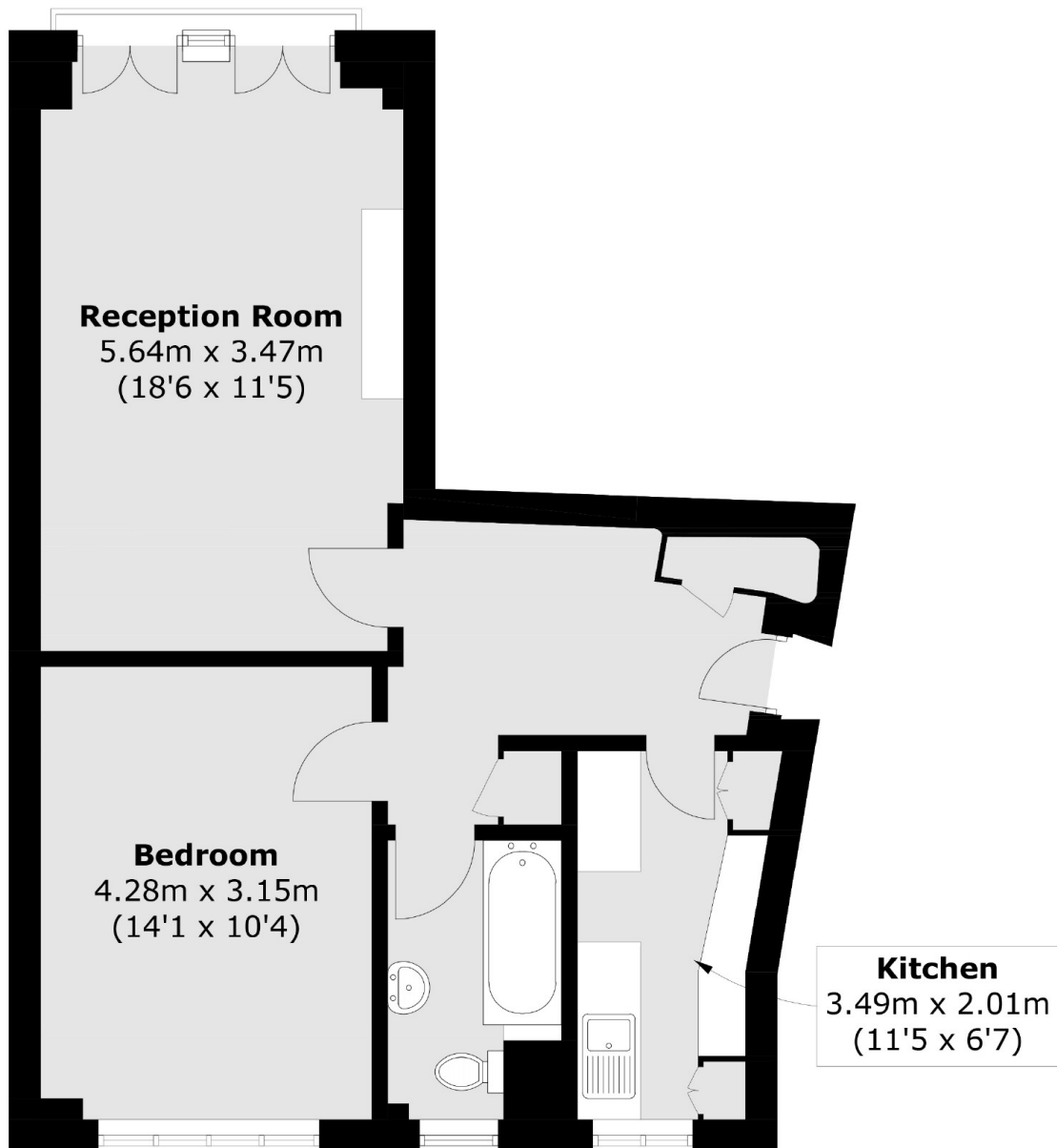
A one double bedroom apartment on the first floor of a popular 24 hour portered building in Westminster. Spacious reception room with wood floors, separate kitchen, good size double bedroom and bathroom with shower over bath. An Ideal home for a single professional or a couple.

Ideally located close to the Houses of Parliament and Whitehall as well as the numerous amenities, shops and restaurants of Victoria Street such as Cardinal Place shopping centre, the new Curzon cinema and a House of Fraser department store.

Features

- One Double Bedroom
- Juliette Balcony
- Separate Kitchen
- Wood Floors Throughout
- 24 Hour Porter Service
- Excellent Location

Marsham Street, London, SW1P



Total area (approx.): 54.3 sq. m (584.5 sq. ft)