



Rochester Row, SW1P

£450 Per week

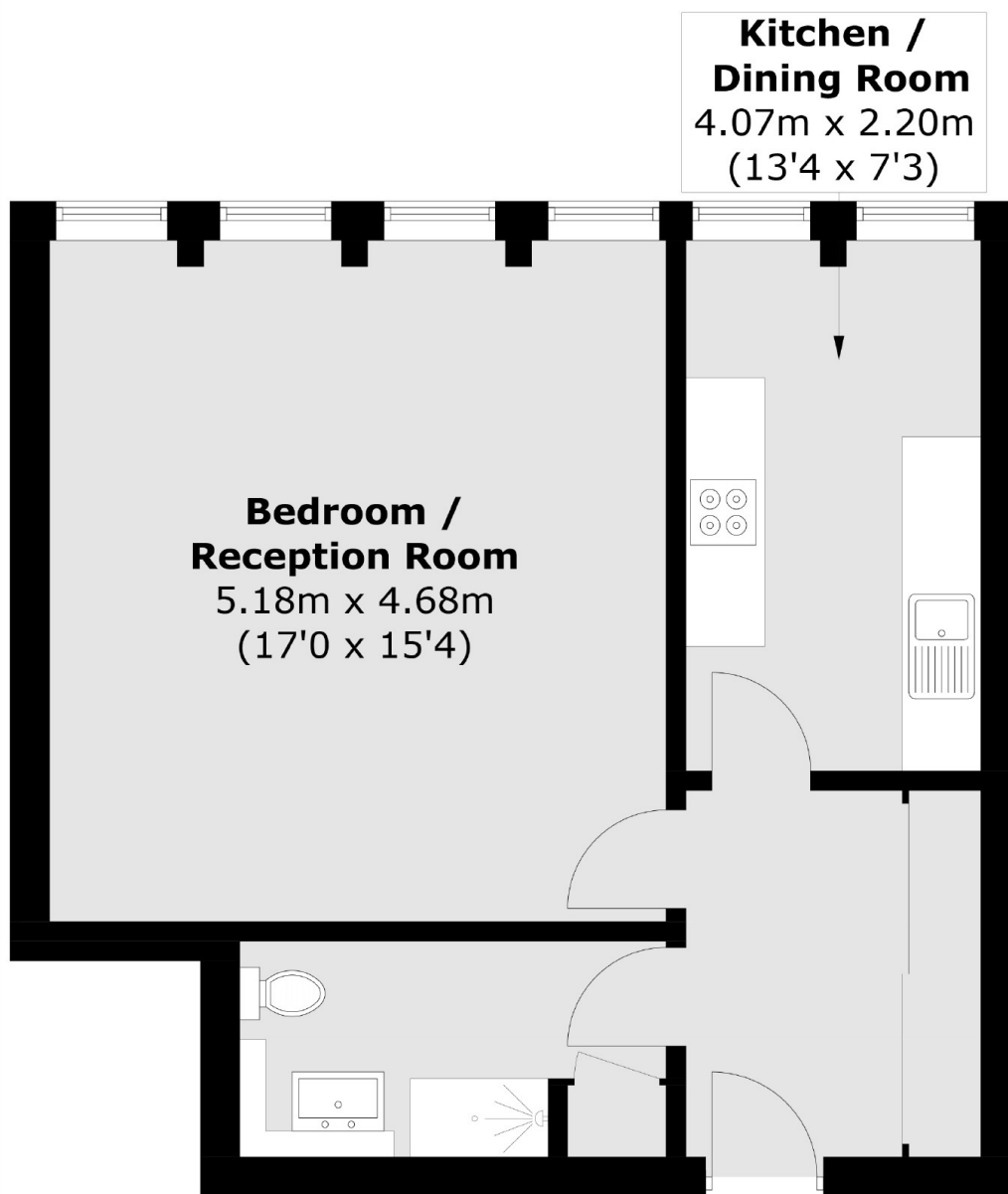
A large studio apartment based on the sought after Rochester Row with fantastic natural light. The apartment is newly refurbished and is big enough for either a couple or single.

Emanuel House is located on Rochester Row, close to the junction with Greycoat Place and is therefore well positioned for access to the local shopping facilities of Victoria Street and the transport services of Victoria.

Features

- Newly Refurbished
- Separate Kitchen
- Good Natural Light
- Lift Access
- Integrated Appliances
- Close to Transport

Rochester Row,
London, SW1P



Fourth Floor

Total area (approx.): 47.2 sq. m (508.0 sq. ft)

Dexters

Pimlico
42 Denbigh Street
London
SW1V 2ER
Lettings
020 7976 5200

Energy Rating: D. We aim to make our particulars both accurate and reliable. However they are not guaranteed; nor do they form part of an offer or contract. If you require clarification on any points then please contact us, especially if you're traveling some distance to view. Please note that appliances and heating systems have not been tested and therefore no warranties can be given as to their good working order.

 **RICS** | Regulated
Estate Agent
and Letting Agent

dexters.co.uk