



Sussex Street, SW1V

£1,153 Per week

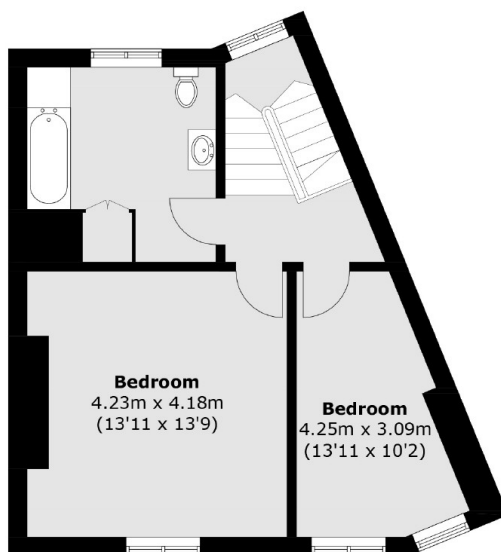
A spacious and well presented four bedroom house in the heart of Pimlico with three modern bathrooms, eat in kitchen and plenty of entertaining space.

Sussex Street is located in the middle of the Pimlico Grid with a number of independent shops and cafés on your doorstep. It is only a short walk to the Thames and the Kings Road in Chelsea.

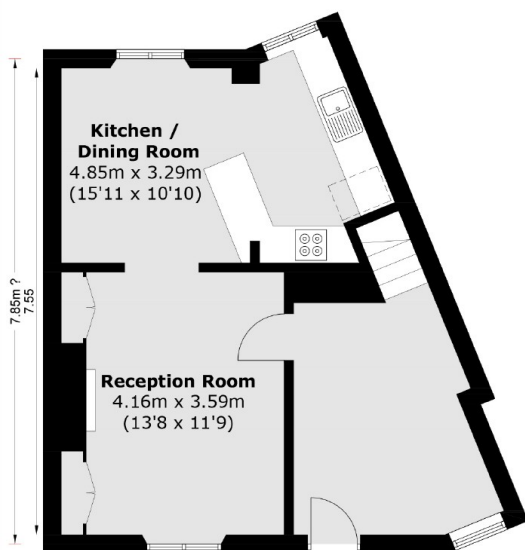
Features

- Eat In Kitchen
- Three Bedrooms
- Three Bathrooms
- Tax Band G
- Centrally Located
- Feature Fireplace

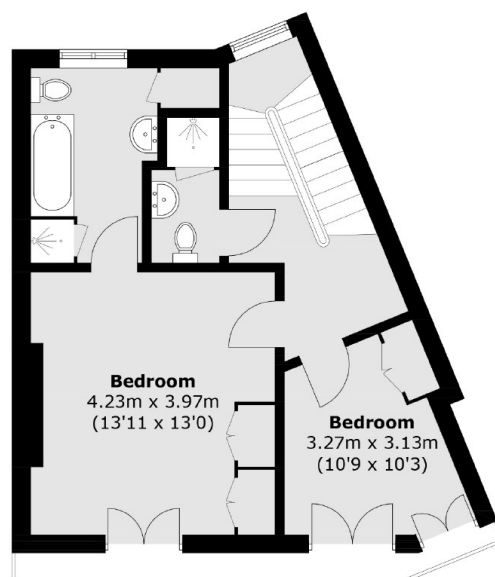
Sussex Street, London, SW1V



Second Floor



Ground Floor



First Floor

Total area (approx.): 137 sq. m (1,474.6 sq. ft)