



## Buckingham Gate, SW1E

£7,000 Per week

The Buckingham is a collection of six impressively grand two and three bedroom apartments, crafted out of three 19th century Grade II listed townhouses

Each meticulously designed apartment has been painstakingly renovated for 21st century living and is serviced by a range of private amenities, including secure underground parking and 24 hour concierge and security.

This is a three bedroom duplex apartment, set over two townhouses and across two principal floors (raised ground and first), with its own front entrance off Buckingham Gate.

Situated directly opposite Buckingham Palace, The Buckingham's apartments enjoy a centrality of location that few others possess they sit at the very heart of London's most distinguished address.

### Features

- 3 bedrooms
- 4 reception rooms
- 3 bathrooms
- Period
- Porter / Concierge
- Balcony
- Listed
- Patio/Terrace

## Buckingham Gate, SW1E

The interior of the apartment has been designed by world renowned designer Rose Uniacke, who applies an accomplished and thoughtful interior style to enhance the quintessentially classical architecture.

There is also access to the apartment via the concierge entrance, with a discreet third access and service route via the secure underground car park.

The apartment benefits from two private parking spaces using a car stacker system.

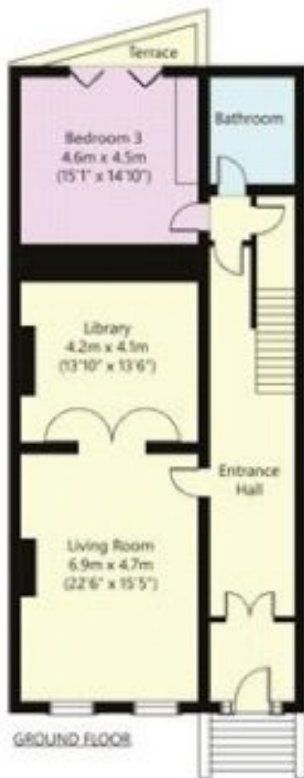
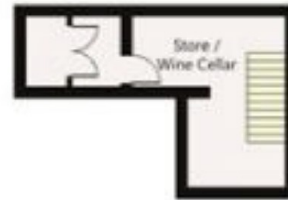
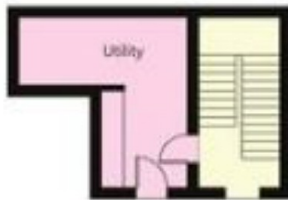


# Buckingham Gate, London, SW1E

The Buckingham, Apartment 1  
8 - 9 Buckingham Gate,  
St James's Park, London SW1

Internal Floor Area - 433 m<sup>2</sup> (4,633 ft<sup>2</sup>)

	Reception room, general living area or circulation area
	Bedroom or dressing room
	Work rooms eg kitchen or utility
	Bathrooms
	Vaults or storage
	Outside space



NOT TO SCALE  
 While every effort has been made to ensure the accuracy of these floorplans, measurements are approximate and the responsibility is taken for any errors, omissions or mis-statements.  
 The above is for illustrative purposes only and should not be used as a contract.  
 Please refer to the purchase offer and floor plan for the actual floor plan and dimensions of the property.