



## Catherine Place, SW1E

£4,045 Per week

Catherine Place is a highly desirable street in the prestigious Birdcage Walk Conservation Area, just a few minutes from Buckingham Palace and the green open spaces of both Green Park and St James's Park.

This is an excellent location equidistant from St James's Park tube station and Victoria train, tube and bus terminals. A host of restaurants, cafés, shops and other amenities are in the vicinity making this an ideal area for a family.

### Features

- Four Bedrooms
- Courtyard Garden
- Entertaining Space
- Close to Parks
- Transport Links Nearby
- Contemporary Style



## Catherine Place, SW1E

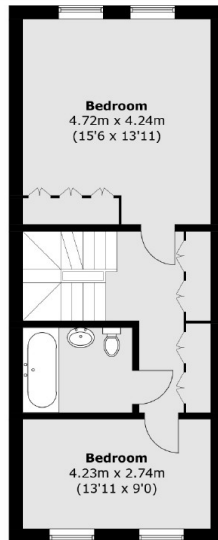
This fine period townhouse is beautifully presented in a contemporary style and would be ideal for entertaining. The accommodation is laid out over five floors, on the lower ground floor there is a spacious dining room connecting to a stunning kitchen/breakfast room with double door leading out to an attractive courtyard garden. Also, a guest cloakroom.

A double reception room is situated on the ground floor. The principal bedroom, dressing room and large bathroom are positioned on the first floor. The second floor has a bedroom, study/bedroom, bathroom and an array of wardrobes on the landing area. The third floor has a bedroom, bathroom and dressing room area.

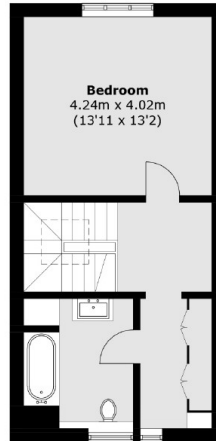




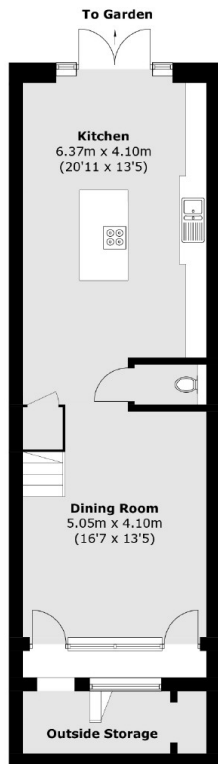
# Catherine Place, London, SW1E



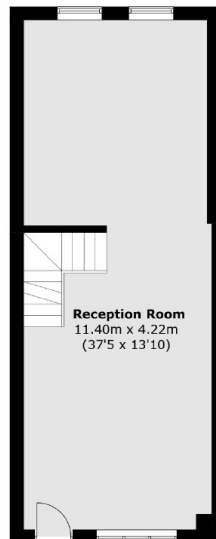
**Second Floor**



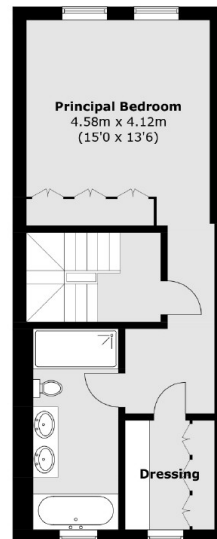
**Third Floor**



**Lower Ground Floor**



**Ground Floor**



**First Floor**

Total area (approx.): 232.7 sq. m (2,504.6 sq. ft)  
Outside Storage: 5.7 sq. m (61.3 sq. ft)