



Ashley Gardens, SW1P

£2,875 Per week

An elegant, purpose-built Victorian Mansion flat in the heart of Westminster. This grand and impressive 1890's development is within the Westminster Cathedral Conservation Area.

Thirleby Road is located a few minutes from a variety of shops and fashionable restaurants on Victoria Street and there are excellent transport facilities at Victoria transport hub including the Gatwick Express.

Features

- Three Bedrooms
- Brand New Refurbishment
- Two Bathrooms
- Lift Access
- Modern
- 24 Hour Concierge



Ashley Gardens, SW1P

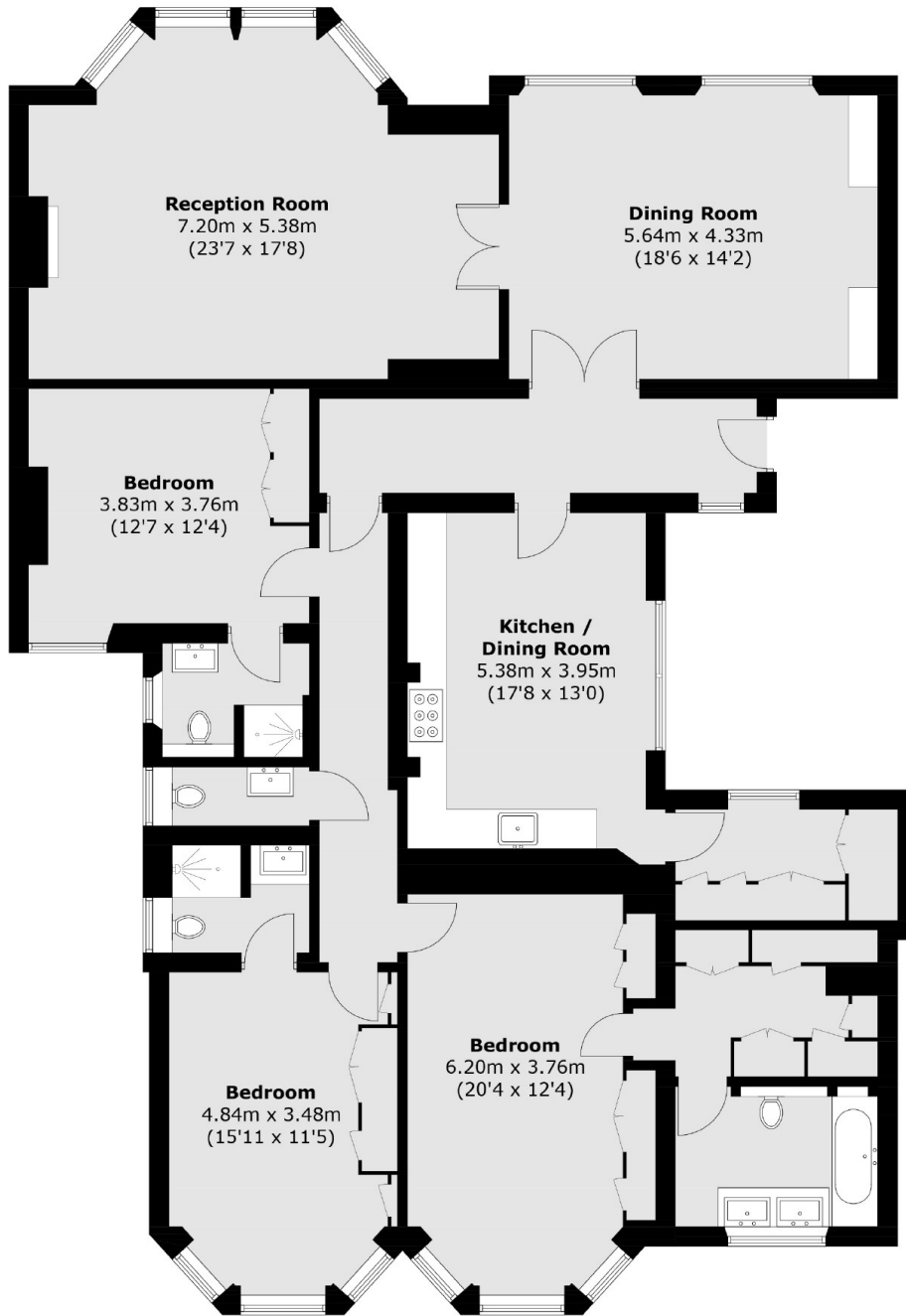
An elegant beautifully refurbished three bedroom lateral apartment offering well appointed large original rooms, an abundance of period features and exciting views.

The property is situated on the ground floor of a prestigious mansion building in one of Westminster's finest residential areas.

The accommodation comprises large entrance hall, one original reception room, large kitchen with dining area, dining room, master bedroom with en suite bathroom, one further double bedroom, family bathroom, plenty of built in wardrobes throughout the apartment and 24 hour portage.



Ashley Gardens, London, SW1P



Total area (approx.): 195.0 sq. m (2,099.0 sq. ft)