



Catherine Place, SW1E

£2,495 Per week

A particularly impressive four bedroom family house on a quiet street close to Buckingham Palace. This house is newly renovated and refurbished to an immaculate standard.

This is an excellent location equidistant from St James's Park tube station and Victoria train, tube and bus terminals. A host of restaurants, cafés, shops and other amenities are in the vicinity making this an ideal area for a family.

Features

- Four Bedrooms
- Courtyard Garden
- Entertaining Space
- Close to Parks
- Transport Links Nearby
- Contemporary Style



Catherine Place, SW1E

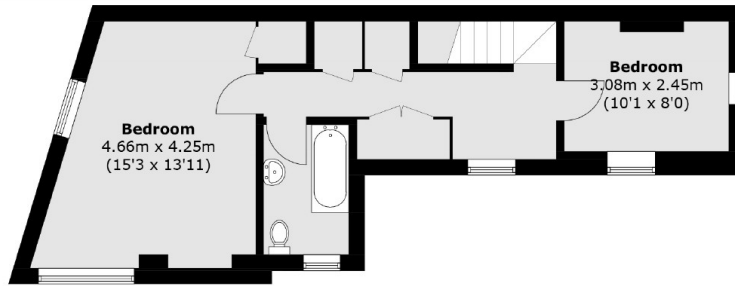
This fine period townhouse is beautifully presented in a contemporary style and would be ideal for entertaining.

The accommodation is laid out over three floors, on the ground floor there is a spacious dining room connecting to a stunning fully fitted kitchen and a guest WC.

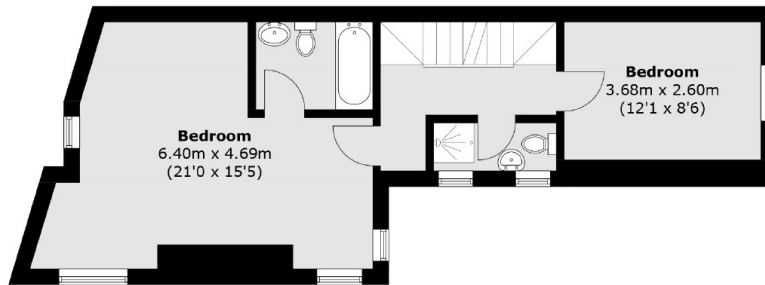
A double reception room with a beautiful feature fireplace is situated on the first floor along with a study/bedroom. The principal bedroom and large en suite bathroom and the third bedroom are positioned on the second floor. The second bedroom, study/bedroom and bathroom are arranged over the third floor. .



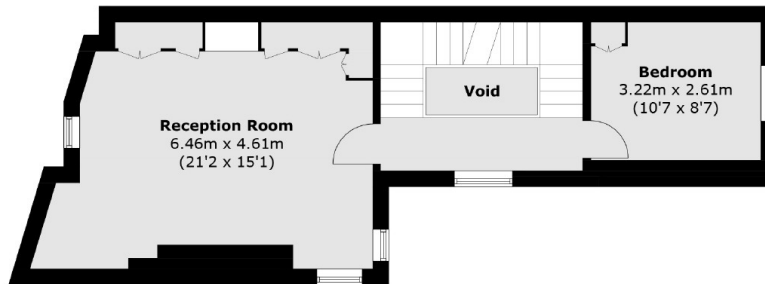
Catherine Place, London, SW1E



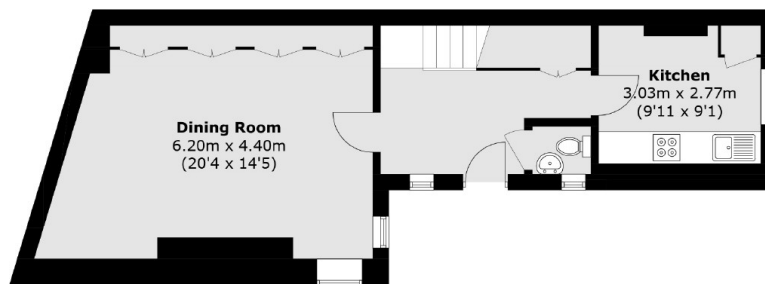
Third Floor



Second Floor



First Floor



Ground Floor

Total area (approx.): 179.1 sq. m (1,927.7 sq. ft)