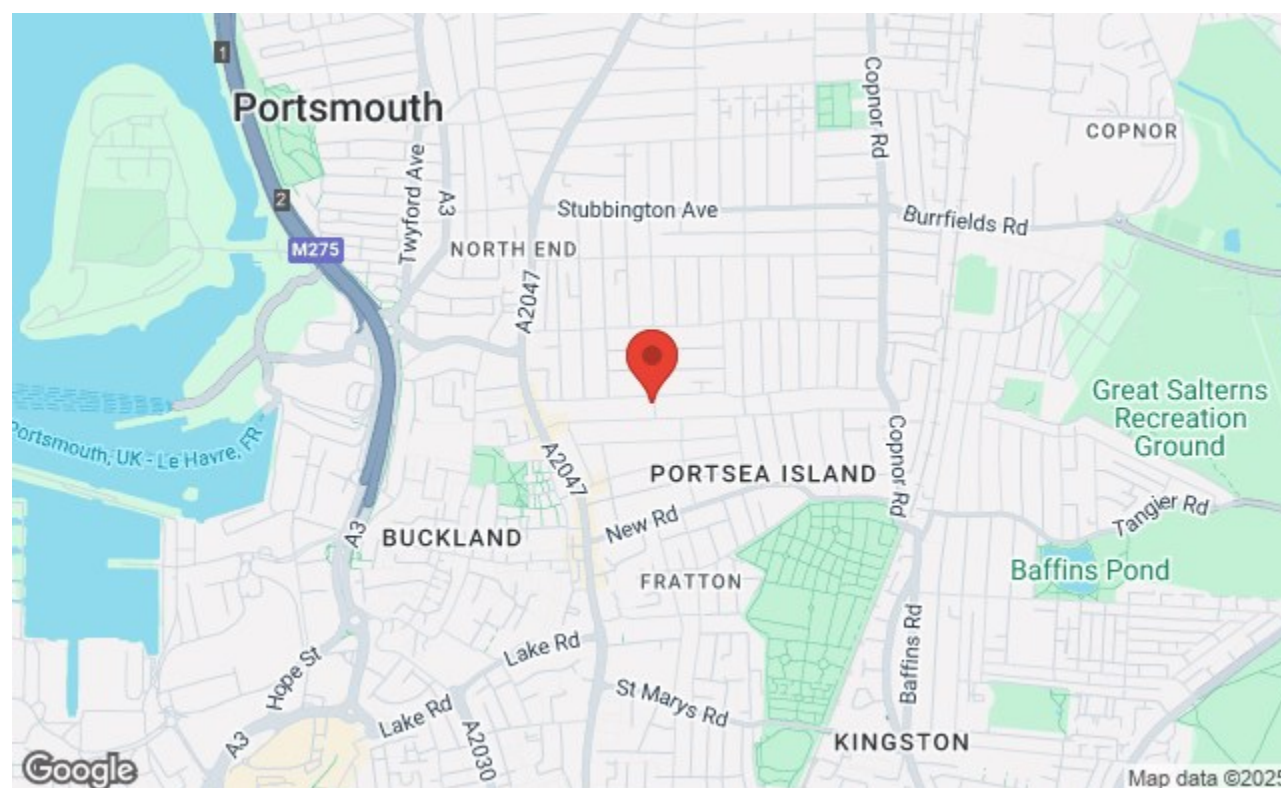




£1,200 Per Month

Pink Road, Portsmouth PO2 7NH

bernards
THE ESTATE AGENTS



HIGHLIGHTS

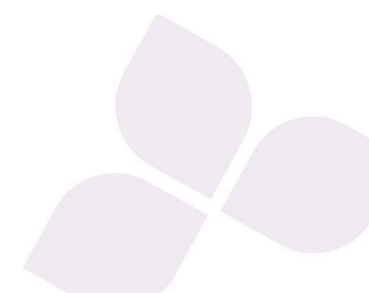
- *MORE PHOTOS TO FOLLOW*
- TWO BEDROOMS
- FAMILY HOME
- MODERN KITCHEN
- ENCLOSED REAR GARDEN
- CENTRAL LOCATION
- UPSTAIRS BATHROOM
- AVAILABLE END OF JUNE
- MUST VIEW
- EPC RATING D

Nestled in the heart of Portsmouth, this two-bedroom family home will be available to occupy at the end of June. The property boasts a contemporary kitchen, designed to meet the needs of today's lifestyle, making it an ideal space for both cooking and entertaining.

Further benefits include an enclosed rear garden, which offers a private outdoor space for gardening and relaxation. Situated in a central location, this property provides easy access to local amenities, schools, and transport links, making it an excellent choice for families and professionals alike.

Upstairs, you will find a family bathroom and two spacious bedrooms, filled with natural light, creating a warm and inviting atmosphere. Don't miss the chance to make this lovely home your own.

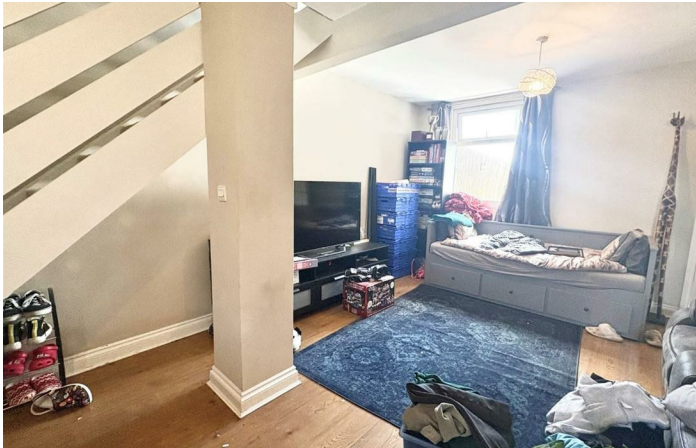
129 London Road, Portsmouth, Hampshire, PO2 9AA
t: 02392 728090



Call today to arrange a viewing
02392 728090
www.bernardsestates.co.uk



PROPERTY INFORMATION



Energy Efficiency Rating		
	Current	Potential
Very energy efficient - lower running costs		
(92 plus) A		
(81-91) B		
(69-80) C		
(55-68) D		
(39-54) E		
(21-38) F		
(1-20) G		
Not energy efficient - higher running costs		
England & Wales		
EU Directive 2002/91/EC		



Call today to arrange a viewing
02392 728090
www.bernardsestates.co.uk

