



Chantlers Hill

Paddock Wood TN12 6LX

Guide Price £599,000



COUNTRY HOMES

Paddock Wood TN12 6LX

Beautifully presented 3 bed semi-detached character cottage situated on the border of Paddock Wood and within the parish of Brencley. Benefitting from a stunning outlook, early viewing is highly encouraged.

This immaculate home has been lovingly extended and upgraded by the current owners and offers the perfect blend of character charm and modern convenience. As you can see from the floor plan, downstairs comprises a study and a sitting room which flows seamlessly into the kitchen and dining room. Further benefits include a downstairs cloakroom and utility with door out onto the rear garden.

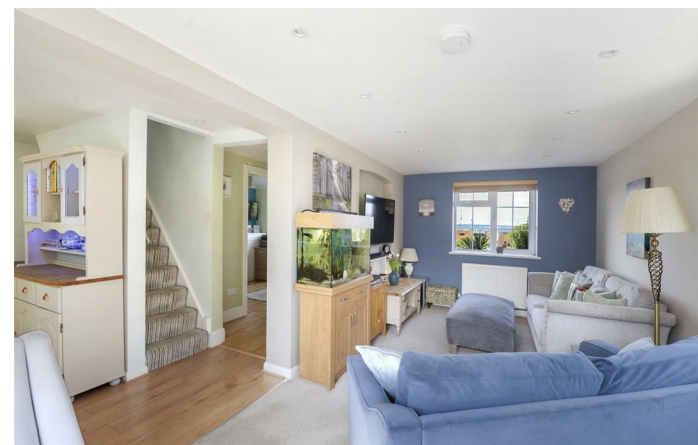
Upstairs is a large landing with several useful storage cupboards, two good size bedrooms and a well-appointed family bathroom, ensuring that daily routines are both practical and pleasant. The second floor houses a further large bedroom.

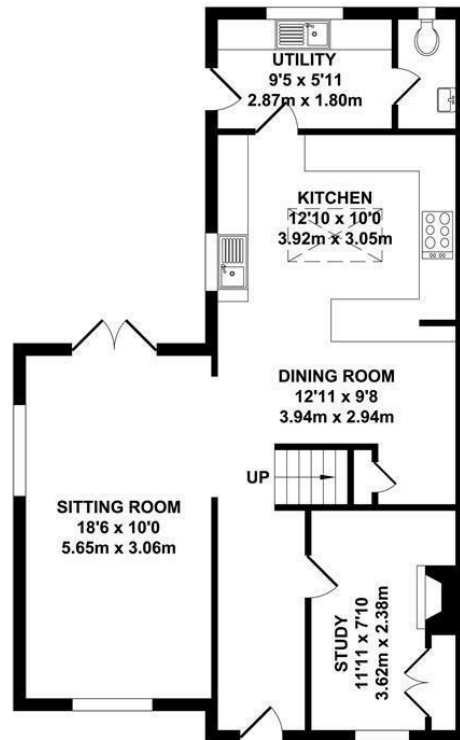
To the front, the property boasts a driveway with parking for two vehicles allowing for easy access and convenience. The well tended garden offers a beautiful space to relax and enjoy with family and friends and consists of a patio and large grassed area with mature borders and trees.

Paddock Wood is known for its friendly community atmosphere and excellent local amenities, including shops, schools, and parks, all within easy reach. The area is well-connected, with good transport links and a mainline station into the Capital. Brencley is a sought-after village location in an area of outstanding natural beauty and is just a short drive in the other direction or a pleasant walk across fields, accessed by the nearby/neighbouring footpath, perfect for dog walks. Local amenities include a newsagents/post office, coffee shop, public house and several sporting clubs plus a dentist and doctors surgery.

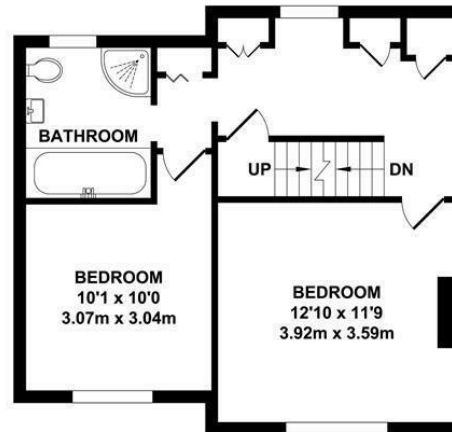
This semi-detached house presents a wonderful opportunity for those looking to settle in a semi-rural location. Do not miss the chance to make this lovely property your new home.

- Delightful 3 bed character cottage
- Stunning views
- Sitting room
- Kitchen/diner
- Study
- Utility & downstairs cloakroom
- Family bathroom
- Driveway
- Beautiful garden
- Early viewing highly encouraged

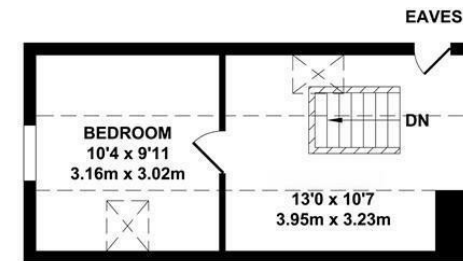




GROUND FLOOR
APPROX. FLOOR AREA
686 SQ.FT.
(63.76 SQ.M.)

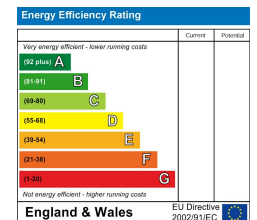


FIRST FLOOR
APPROX. FLOOR AREA
473 SQ.FT.
(43.96 SQ.M.)



SECOND FLOOR
APPROX. FLOOR AREA
246 SQ.FT.
(22.87 SQ.M.)

TOTAL APPROX. FLOOR AREA 1406 SQ.FT. (130.59 SQ.M.)
Whilst every attempt has been made to ensure the accuracy of the floor plan contained here, measurements of doors, windows, rooms and any other items are approximate and no responsibility is taken for any error, omission or mis-statement. This plan is for illustrative purposes only and should be used as such by any prospective purchaser. The services, systems and appliances shown have not been tested and no guarantee as to their operability or efficiency can be given.
Zome Media ©2025



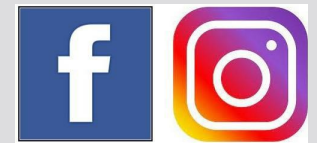
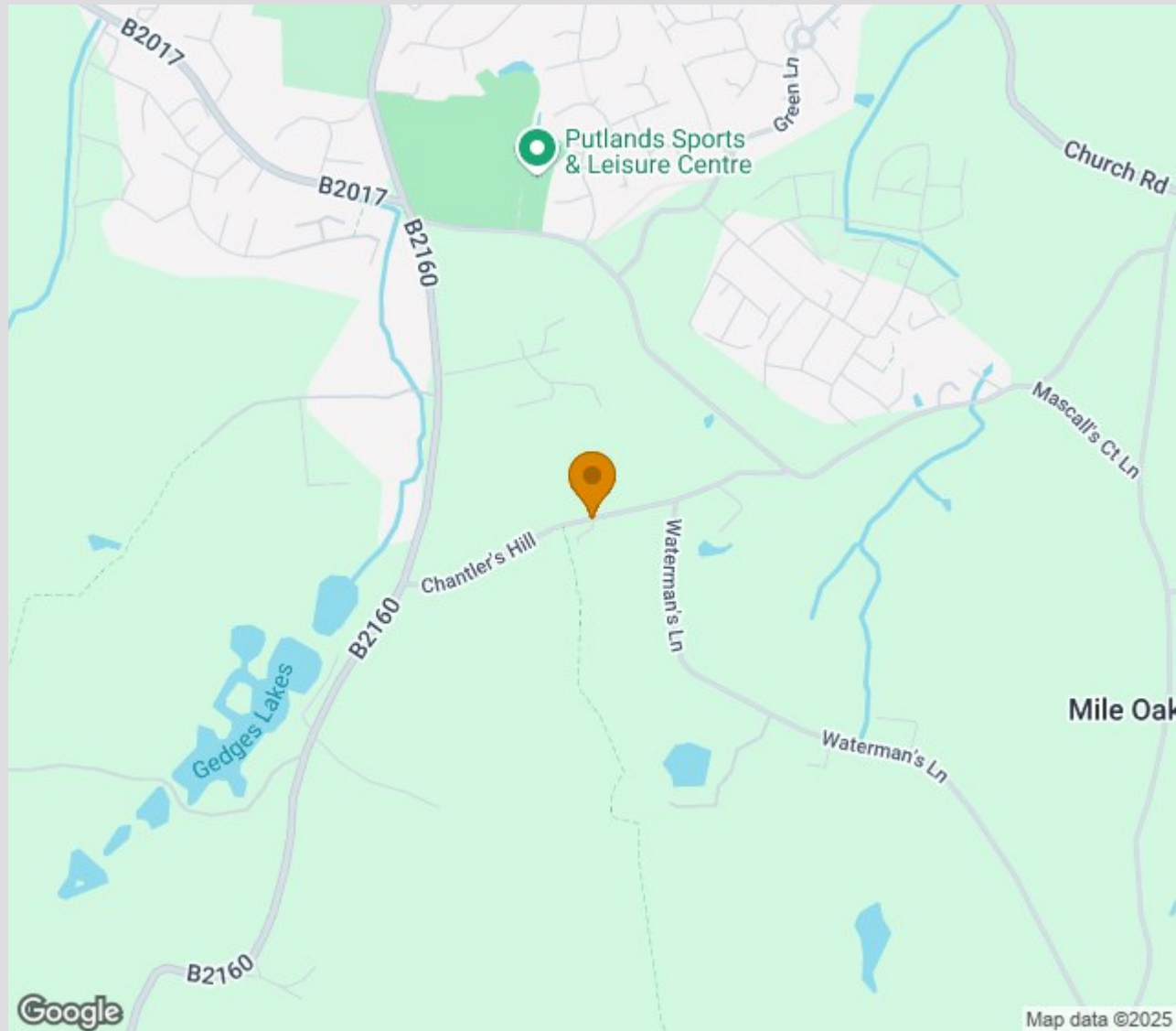




Location Map

Tenure: Freehold

Council tax band: C



Zoopla.co.uk
Smarter property search



TO VIEW CONTACT:

01892 838 080

countryhomes@khp.me

www.khp.me

