



Orchard Road

East Peckham TN12 5AN

Guide Price £335,000



COUNTRY HOMES

East Peckham TN12 5AN

Charming two bedroom character cottage located in the popular village of East Peckham. Situated in a peaceful neighbourhood, this older property exudes character and charm with lovely period features, but offers the conveniences of modern living.

This delightful property boasts two reception rooms; there is a good size living room with feature fireplace and a dining room just off the kitchen which offers the perfect space for entertaining friends and family.

Upstairs are two very good size bedrooms and an upgraded family bathroom with large bath and separate shower cubicle.

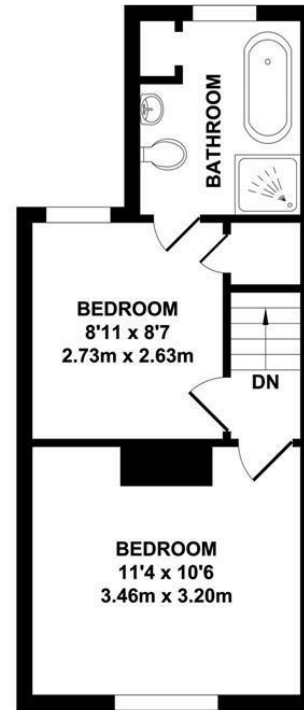
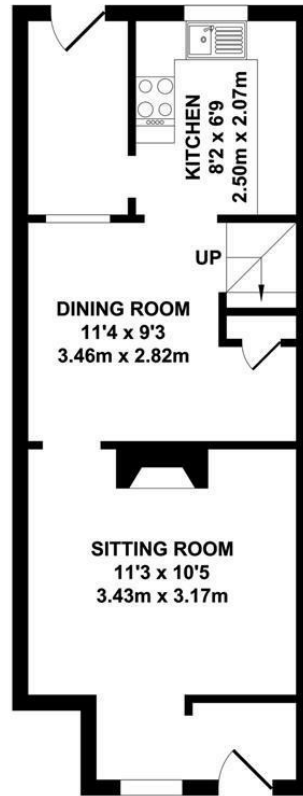
As you can see from the photos, the rear garden is mainly laid to lawn but also offers a decked area and a shed.

East Peckham is a desirable village which provides local shops and Primary school. The property is well located for those who need to commute as the excellent 'A' road network provides easy access to the M20 and beyond. The village lies between the larger towns of Tonbridge and Paddock Wood, both offering mainline station, larger supermarkets and Secondary school.

Don't miss the opportunity to make this house your own, early viewing is highly encouraged. Book a viewing today and step into your future home!

- Two bedroom character cottage
- Period charm
- Contemporary kitchen
- Living room
- Dining room
- Modern family bathroom
- Rear Garden
- Local amenities close by
- Great transport links
- Early viewing highly encouraged





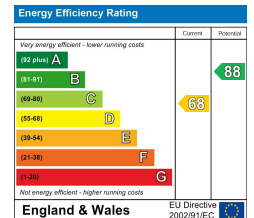
GROUND FLOOR
APPROX. FLOOR AREA
354 SQ.FT.
(32.89 SQ.M.)

FIRST FLOOR
APPROX. FLOOR AREA
285 SQ.FT.
(26.45 SQ.M.)

TOTAL APPROX. FLOOR AREA 639 SQ.FT. (59.34 SQ.M.)

Whilst every attempt has been made to ensure the accuracy of the floor plan contained here, measurements of doors, windows, rooms and any other items are approximate and no responsibility is taken for any error, omission or mis-statement. This plan is for illustrative purposes only and should be used as such by any prospective purchaser. The services, systems and appliances shown have not been tested and no guarantee as to their operability or efficiency can be given.

Zome Media ©2021



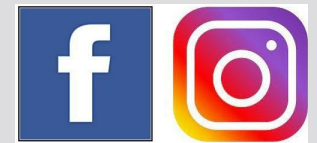
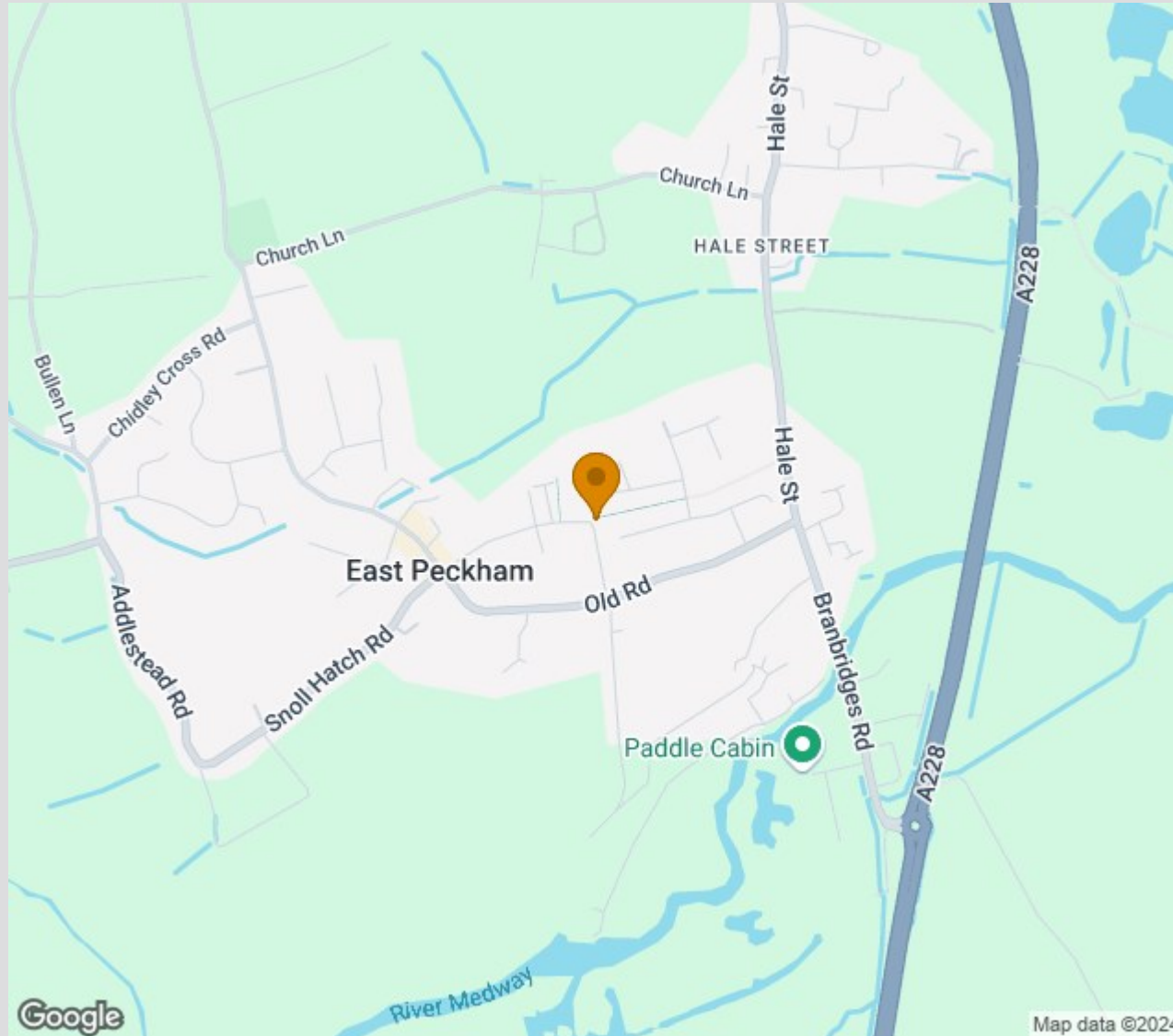




Location Map

Tenure: Freehold

Council tax band: C



Zoopla.co.uk
Smarter property search



TO VIEW CONTACT:

01892 838 080

countryhomes@khp.me

www.khp.me

