

warren ■  
powell-richards

# Sherwood House

Hindhead | Surrey | GU26 6SU





## Sherwood House

Tower Road, Hindhead, Surrey, GU26 6SU

### Freehold

An exciting opportunity to purchase a brand new 5 bedroom detached house, arranged over three floors, on the historically prominent Tower Road. Walking distance of National Trust woodland and excellently positioned for easy access to the A3

- A sympathetically designed brand new house; offering the character appearance of neighbouring properties but with all the convenience of modern family accommodation
- Driveway parking plus attached garage with electric door
- Entrance hall with coats cupboard, cloakroom, stairs to the 1st floor and utility room
- Double doors from the hall to a superb open plan kitchen/dining/family room with bi-fold doors extending across the rear and large roof lantern
- Contemporary styled Magnet kitchen with large central island which provides a working area and breakfast bar, a great space to entertain guests whilst cooking or for kids to do homework!
- Double aspect study/playroom
- Stairs to the 1st floor
- Large principle bedroom with en suite bathroom
- 2 further double bedrooms and a family bathroom
- Stairs to 2nd floor
- 2 further double bedrooms, bathroom and roof store
- Enclosed rear garden with mature trees to the boundary. Predominantly laid to lawn with generous patio adjacent to the house flanked by two formal planters
- Anticipated completion: November 2020
- 10 year structural defects policy in place





## LOCATION

Hindhead is a small historic village, situated between the larger towns of Farnham and Haslemere, both having good high street shopping and main line rail connections to London. Access to the A3 is easy, with motorway style connections to London, the South Coast and both principal airports. Hindhead benefits from many acres of protected countryside, owned by the National Trust, the Devil's Punchbowl (being one) which is a designated area of outstanding natural beauty. A small selection of shops and services, including the local primary school can be found within walking distance in Beacon Hill. Close by, there are several Golf Courses, including Hindhead Golf Course which was founded in 1904 by Sir Arthur Conan Doyle. [www.beaconhillhindhead.org](http://www.beaconhillhindhead.org)

## DIRECTIONS

From our office take the Headley Road (B3002) towards Hindhead. At the roundabout take the 1st main exit onto the A333. Turn left into Tower Road and Sherwood House can be found on the right hand side

## COUNCIL TAX

Waverley Borough Council/Surrey County Council.  
Council Tax Band: to be assessed (Correct at time of publication and is subject to change following a council revaluation after a sale)

## SERVICES

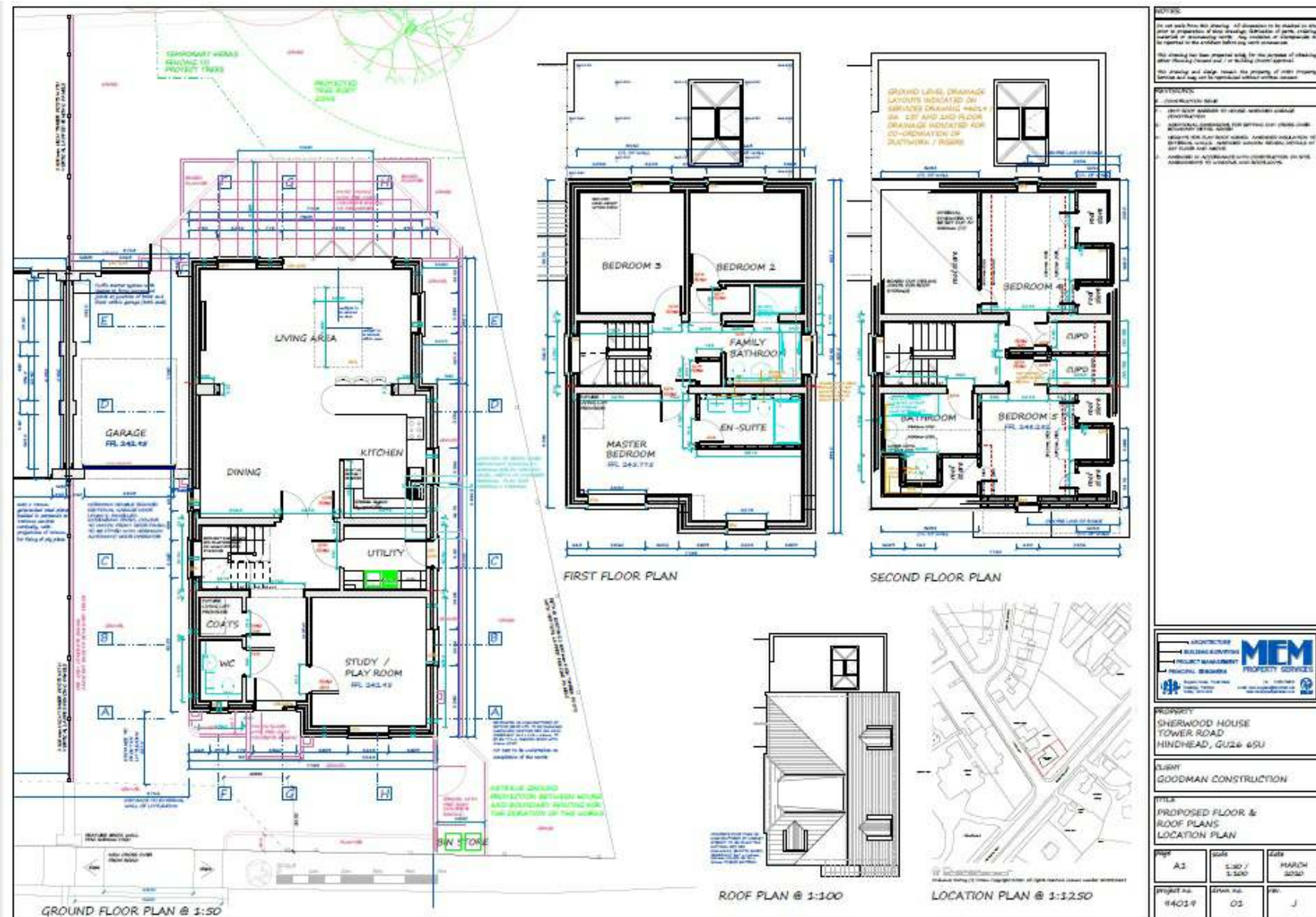
All mains services



View from The Devils Punchbowl







Office Locations: Alton • Farnham • Godalming • Grayshott • Haslemere • London

Property details are a general outline and do not constitute any part of an offer or contract. Services, equipment, fittings or central heating systems have not been tested and no warranty is given or implied that these are in working order. Buyers are advised to obtain verification from their solicitor or surveyor. Fittings and fixtures are not included unless specifically described. Measurements, distances and areas are approximate and for guidance only. This material is protected by laws of copyright. W1110