



© South Wales Property Photo

The Cottage

St. Brides Major, CF32 0SY

Price £650,000

HARRIS & BIRT



Harris & Birt are pleased to offer to market this attractive package of this three/ four bedroom detached character cottage. A detached double garage/ workshop and an attractive out building/ stable block. Situated on the outskirts of the village of St. Brides Major. In an elevated position with full benefits of fantastic views across the Bridgend valley beyond. The property benefits from seclusion and privacy. Close to all village amenities. Accommodation briefly comprising entrance/ utility room, shower room, kitchen/ dining/ living space, living room, study, storage area, orangery and bedroom four to ground floor. Stairs leading up to three bedrooms, two doubles and a good sized single and a family bathroom to the first floor. The property is accessed via wooden double gates giving access to detached double garage that doubles as a workshop. There is huge potential for the outbuilding that could easily be converted into holiday cottage or ancillary accommodation.

St Brides Major offers village facilities within walking distance which include general store/post office, The Fox pub & restaurant, specialist shops, well regarded Church in Wales Infant and Junior School from where the children go to Cowbridge Comprehensive. Just a mile or so to the south is the Heritage Coastline and the beaches at Southerndown and Ogmores-by-Sea. Southerndown Golf Club is just a few minutes drive away. The good local road network brings easy access to major centres including Cowbridge, Llantrisant, Cardiff, Swansea, Bridgend, etc. There is a main railway station at Bridgend and Cardiff Wales Airport is within comfortable driving distance.

- Three/ Four Bedrooms
- Double Garage
- Private Garden
- Open Plan Kitchen/ Dining/ Living Space
- Detached Cottage
- Stable Block
- Plenty of Off Road Parking
- EPC - D

Accommodation

Ground Floor

Entrance/ Utility Room 15'8 x 7'0 (4.78m x 2.13m)

Entered via UPVC half glazed door to good sized utility room. Range of wall and base units with a Farmhouse country cream shaker style. Fitted mottle effect worksurface with stainless steel sink and drainer and chrome mixer tap. Plenty of space for appliances underset. Double glazed Velux window set into eaves with double glazed window to rear elevation. Porcelain tiled flooring. Fully skimmed walls. Access to loft via hatch. Wall mounted Worcester gas combination boiler. Door through into shower room.

Shower Room 6'6 x 7'0 (1.98m x 2.13m)

Three piece suite currently comprising walk in oversized shower cubicle behind glazed and chrome shower screen. Integrated chrome shower and shower head attachment. Low level WC. Wash hand basin with underset vanity unit in a white high gloss. Tiled splash backs with contrasting tiled floor. Vertical heated towel rail in a gloss white finish. UPVC double glazed obscure window to rear elevation.

Kitchen/ Dining/ Living Room 22'3 x 13'2 (6.78m x 4.01m)

A wonderful heart of the home family space with an open plan social feel. UPVC half glazed door opening out onto front forecourt. Natural light via range of UPVC double glazed picture windows taking advantage of the fantastic view across the valley towards Bridgend. Modern fitted country kitchen in a country cream shaker style finish. Range of wall and base units to match the utility room. Set under and over a mottle effect worksurface. Features including ceramic 1.5 sink and drainer with chrome mixer tap. Gas four ring hob with overhead chimney extractor. Eye line Bosch electric fan oven. Space for dishwasher. Integrated undercounter fridge to remain. Dishwasher to remain (Miele). Tiled splashback. Matching tiled floor. Exposed beam work. Fully skimmed walls and coved ceiling. Fitted radiator. Communicating door through top utility room and inner hall.

Living Room 9'8 x 14'7 (2.95m x 4.45m)

An attractive cosy reception space with straight staircase leading up to first floor landing. Attractive log burning stove set into a pointed stone chimney with flag stone laid hearth. Skimmed walls and ceiling. Fitted carpet. Fitted radiator. UPVC double glazed window opens through into orangery with hard wood fully glazed double doors. Communicating doors to bedroom four and study/snug.

Study/ Snug 9'11 x 6'7 (3.02m x 2.01m)

An adaptable space with double glazed windows to rear elevation. Skimmed walls and ceiling. Fitted carpet. Fitted radiator. Opens through into storage area.

Storage Area

An attractive space currently in use as a playroom, can easily be used as snug/ study. Double glazed window to rear elevation. Double glazed Velux window set into eaves. Skimmed walls. Wood effect floor. Fitted radiator.

Sun Room 17'8 x 16'0 (5.38m x 4.88m)

An attractive range of UPVC double glazed windows with a UPVC vaulted ceiling. Sat on a block built double skimmed dwarf wall to create this wonderfully light and airy reception space. Benefiting from those fantastic views across the valley and overlooking the attractive private and flat gardens. UPVC double glazed patio doors open out onto the patio to rear.

Bedroom Four/ Lounge 12'4 x 12'1 (3.76m x 3.68m)

An adaptable space that can be used as another sitting room. Easily brought back into the sitting room with the removal of the stud partition. Range of UPVC double glazed windows. Skimmed walls. Inset beam work. Fitted carpet. Fitted radiator. Good sized under stairs storage.

First Floor

Landing 7'4 x 13'11 (2.24m x 4.24m)

Access via straight staircase from living room to open landing. Communicating doors to all first floor rooms. Skimmed walls and ceiling. Access to loft via hatch. Fitted carpet.

Master Bedroom 10'10 x 13'4 (3.30m x 4.06m)

Good sized double bedroom. Two low level UPVC double glazed windows enjoying those fantastic views to front. Skimmed walls and ceiling. Fitted carpet. Fitted radiator. Range of built in bedroom storage.

Bedroom Two 12'2 x 11'9 (3.71m x 3.58m)

Another good sized double bedroom. UPVC double glazed window to front and side elevation. Fitted carpet. Fitted radiator. Built in double wardrobe.

Bedroom Three 9'8 x 8'5 (2.95m x 2.57m)

Range of UPVC double glazed window to rear and side elevation. Skimmed walls and ceiling. Fitted carpet. Fitted radiator.

Family Bathroom 6'2 x 10'2 (1.88m x 3.10m)

Three piece suite comprising wood panelled bath with brass taps. Tiled splash back. Inset vanity unit. Hidden cistern low level WC. Ceramic wash hand basin with chrome mixer tap. Tiled splash back. Wooden Velux window to side elevation. UPVC double glazed opaque horizontal window to side elevation. Skimmed walls and ceiling. Vinyl laid floor. Chrome heated towel rail.

Gardens & Grounds

The property is accessed via a pointed stone gated pillared entrance to a block paved forecourt that allows plenty of off road parking. Pedestrian side access to both aspects with gated picket fencing. Further access to garage and pedestrian access through to stable block. Further access from the lane via wooden gate to give access to the stable. All encompassed by pointed stone wall to front. High level hedging to rear to provide plenty of privacy and shelter. The rear garden is mainly laid to lawn. Flat private and secluded. Patio laid path and terrace surrounding. Timber built summer house. Timber built storage shed to remain made private by evergreen hedging to all aspects. An attractive corner media stand built in to remain. Further pedestrian access via UPVC half glazed door to side.

Double Garage 24'7 x 13'8 (7.49m x 4.17m)

Detached block built double garage. Electric up and over garage door. Currently in use as good sized workshop with UPVC double glazed window to side elevation. Wood door to side. Power and light as well as water. Good eaves storage.

Storage Block (40'9) max x (27'3) max ((12.42m) max x (8.31m) max)

An attractive and adaptable space that could easily be converted subject to the necessary permissions to a holiday let/ ancillary unit. Door to good sized stabling. Easy hacking out over the common adjacent. Block built with oversized wooden double doors allowing access. Further wooden pedestrian doors. Fully pitched roof. Double skin external with power and light. A really impressive space. Range of UPVC double glazed windows to allow natural light.

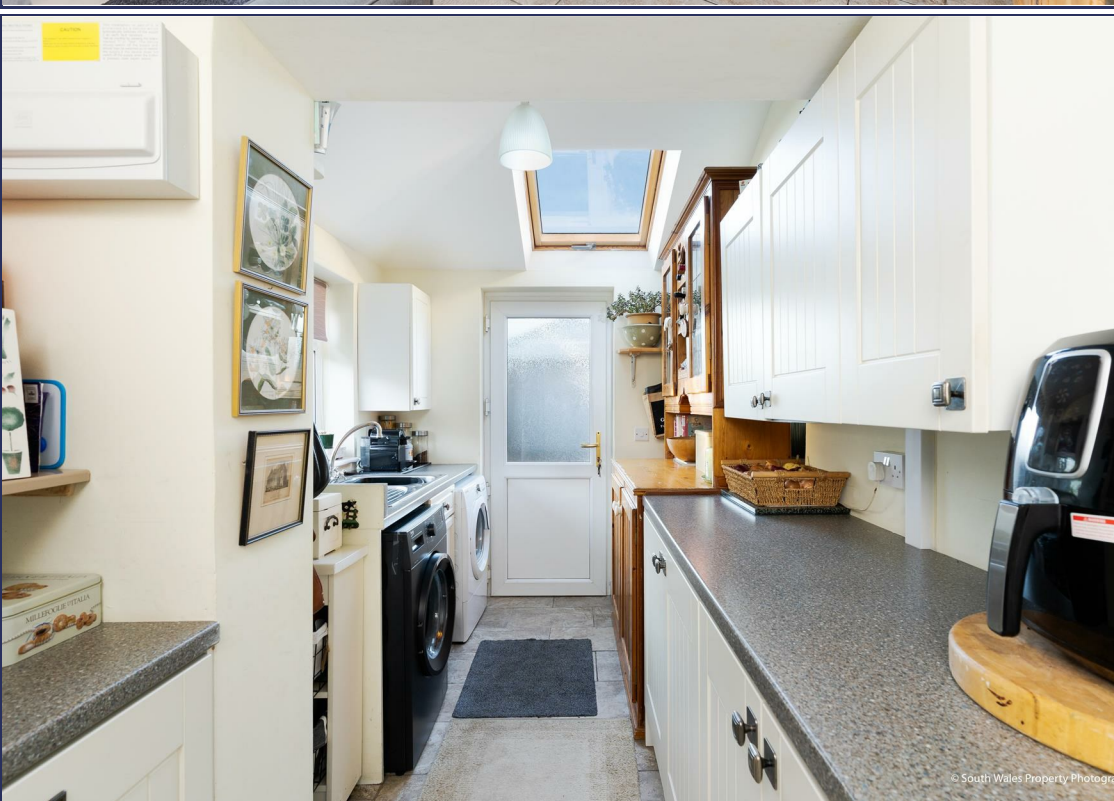
Services

The property is serviced by mains gas electric water and drainage.

Directions

From our office at 65 High Street, Cowbridge, turn right and at the end of Westgate turn left onto the main A48 road towards Bridgend. At the bottom of the long hill, known as Crack Hill, with the Chinese restaurant at the bottom of the hill bear left passing through the villages of Corntown and Ewenny. At the T junction turn left and follow the road into St Brides Major. Turn right before the cattle grid and proceed up the hill. Follow the lane all the way up the hill and the cottage will be on your left hand side with graphite painted wooden double gates.







© South Wales Property Photographers



© South Wales Property Photographers

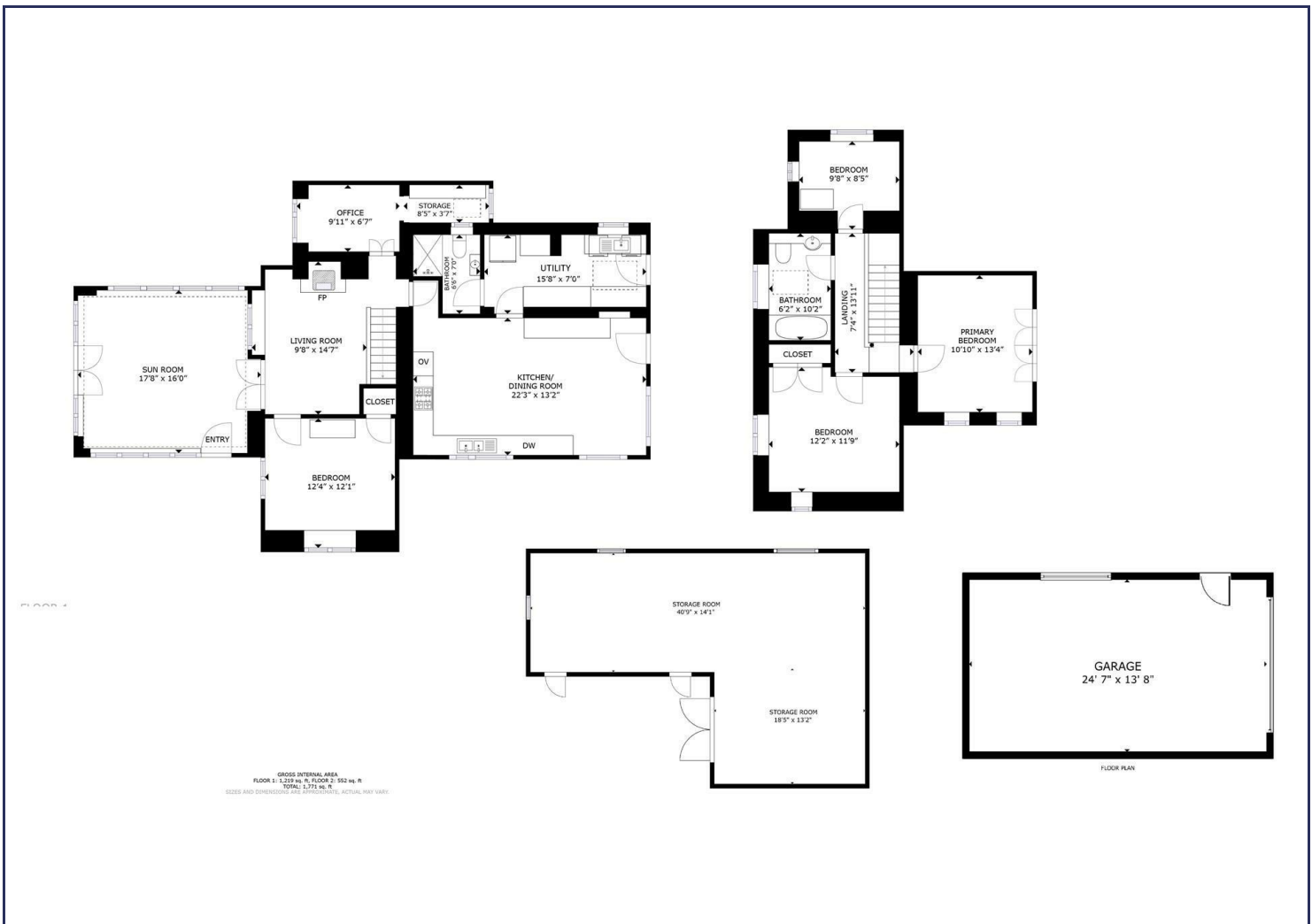


© South Wales Property Photographers



© South Wales Property Photographers





HARRIS & BIRT

Chartered Surveyors, Land and Estate Agents

Cowbridge
 67 High Street, Cowbridge, CF71 7AF
 01446 771777 cowbridge@harrisbirt.co.uk

Cardiff
 359 Caerphilly Road, Cardiff, CF14 4QF
 02920 614411 cardiff@harrisbirt.co.uk

harrisbirt.co.uk

Harris & Birt is the trading name of Ingram Evans Care Ltd. Registered Office: 359 Caerphilly Road, Cardiff, CF14 4QF. Company No: 04845507

You may download, store and use the material for your own personal use and research. You may not republish, retransmit, redistribute or otherwise make the material available to any party or make the same available on any website, online service or bulletin board of your own or of any other party or make the same available in hard copy or in any other media without the website owner's express prior written consent. The website owner's copyright must remain on all reproductions of material taken from this website.

