



Melville Place, N1 8ND  
Asking Price £550,000

coopers  
OF LONDON EST. 1986

# Melville Place, N1

- Bright and spacious apartment 631 sq ft
- Secure gated environment
- Porter
- Private rear terrace
- Allocated parking space
- Highly desirable location
- Chain free

## Bright & Spacious One Bedroom Flat in Prime Islington Location

Offered chain-free, this beautifully presented one double bedroom flat spans 631 sq ft and is set on the raised ground floor of the sought-after Melville Place, a modern and secure gated development with a dedicated resident porter.

Bathed in natural light, the property boasts generous proportions and a contemporary finish throughout. Residents benefit from excellent amenities including secure undercroft parking, a well-maintained on-site cycle store, and peaceful communal grounds.

Situated just moments from the vibrant heart of Upper Street, you'll be surrounded by a wealth of boutique shops, award-winning restaurants, independent theatres, and cosy cinemas. Angel, Essex Road, and Highbury & Islington stations are all within easy walking distance, offering superb connectivity across Central London and the City.

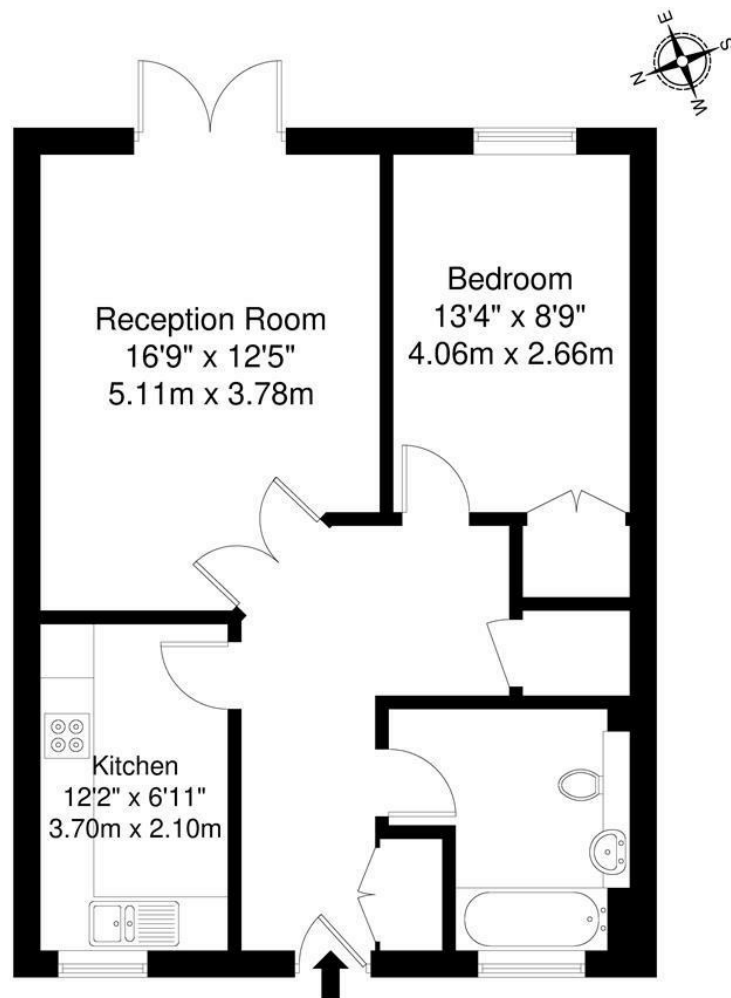
Perfect for professionals, first-time buyers or investors alike – a stylish urban home in a excellent location.











Ground Floor

Melville Place, Victoria Court, N1

Total Gross Internal Area = 58.7 sq m / 631 sq ft

All Measurements are approximate and for identification guideline purposes only, not to scale.  
Compliant with the RICS code of measuring practice

Energy Efficiency Rating		
	Current	Potential
Very energy efficient - lower running costs		
(92 plus) A		
(81-91) B		
(69-80) C		
(55-68) D		
(39-54) E		
(21-38) F		
(1-20) G		
Not energy efficient - higher running costs		
England & Wales	EU Directive 2002/91/EC	

Environmental Impact (CO <sub>2</sub> ) Rating		
	Current	Potential
Very environmentally friendly - lower CO <sub>2</sub> emissions		
(92 plus) A		
(81-91) B		
(69-80) C		
(55-68) D		
(39-54) E		
(21-38) F		
(1-20) G		
Not environmentally friendly - higher CO <sub>2</sub> emissions		
England & Wales	EU Directive 2002/91/EC	

## Viewing

Strictly by appointment with:  
Coopers of London, 22 Cleveland Street,  
Fitzrovia, London W1T 4JB  
[info@coopersoflondon.co.uk](mailto:info@coopersoflondon.co.uk)

**0207 580 9658**

These particulars, whilst believed to be accurate are set out as a general outline only for guidance and do not constitute any part of an offer or contract. Intending purchasers should not rely on them as statements or representation of fact, but must satisfy themselves by inspection or otherwise as to their accuracy. No person in this firm's employment has the authority to make or give any representation or warranty in respect of the property.