



Fitzroy Street, W1T 4BJ
Offers In Excess Of £600,000

coopers
OF LONDON EST. 1986

Fitzroy Street, W1T

- First floor two bedroom apartment
- Bright and spacious throughout
- Secure maintained block
- Excellent central location
- Long lease
- Chain free

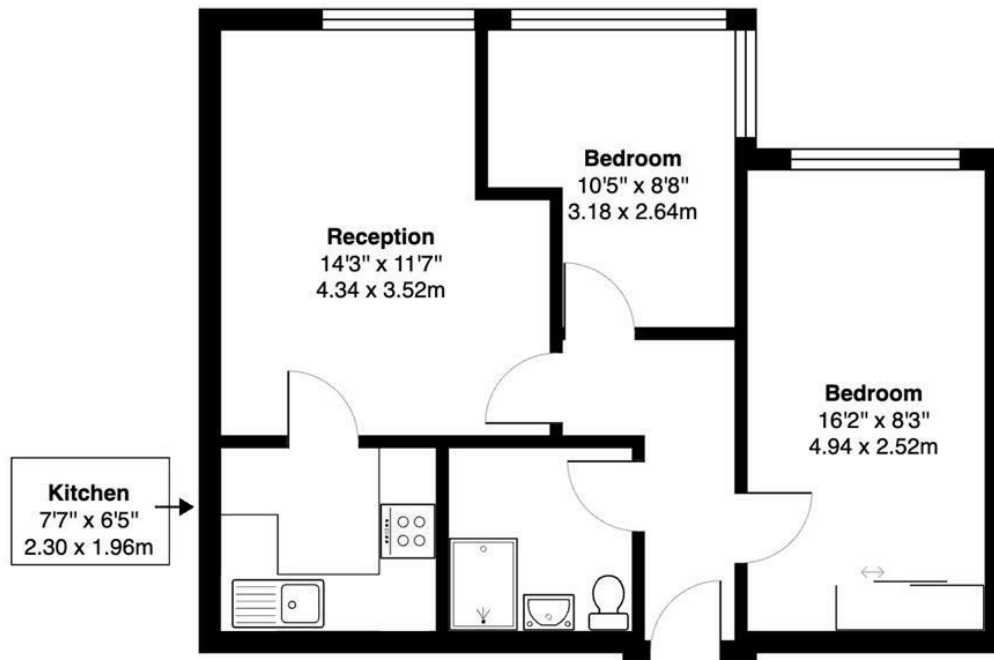
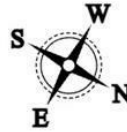
Two bedroom apartment situated on the 1st floor of a popular local development. This two bedroom apartment offers practical living space in a brilliant location, includes an open plan kitchen and a modern bathroom.

Located on Fitzroy Street, W1, King Regents Place is a well maintained secure block with lift access.

This property is positioned only a short walk away from UCL, Goodge Street and Warren Street stations and the famously vibrant Charlotte Street. It is also close to the amenities of Fitzrovia and Marylebone as well as having easy access to the beautiful Regents Park.





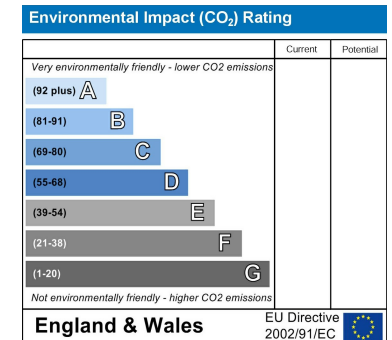
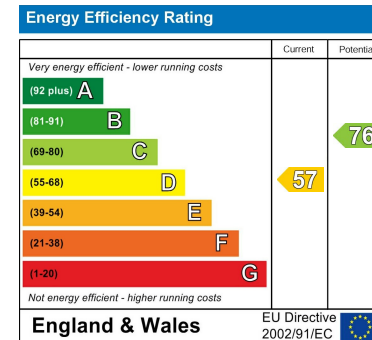


1st Floor

King Regent Place W1T

Total Gross Area: 525 ft² ... 48.8 m²

All measurements are approximate and for identification guideline purposes only, not to scale.
Compliant with the RICS code of measuring practice



Viewing

Strictly by appointment with:
Coopers of London, 22 Cleveland Street,
Fitzrovia, London W1T 4JB
info@coopersonlondon.co.uk

0207 580 9658

These particulars, whilst believed to be accurate are set out as a general outline only for guidance and do not constitute any part of an offer or contract. Intending purchasers should not rely on them as statements or representation of fact, but must satisfy themselves by inspection or otherwise as to their accuracy. No person in this firm's employment has the authority to make or give any representation or warranty in respect of the property.