



Thomas Frye Court, High Street, E15 2PS
Offers In Excess Of £300,000

coopers
OF LONDON EST. 1986

Thomas Frye Court, High Street, E15

- High spec one bed apartment
- Large double bedroom
- Excellent storage throughout
- 24 concierge
- Heating and hot water included in service charge

Penthouse spec one bedroom apartment in the ever-popular One Stratford development.

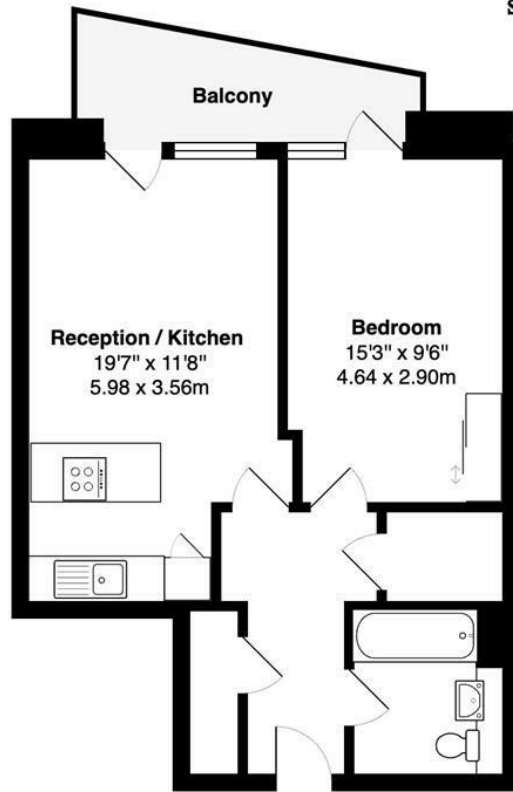
This contemporary apartment features a spacious open plan living area, double bedroom with built-in wardrobes, entry phone system, smart furnishings, good storage facilities, washer/dryer and fridge/freezer. The building is extremely secure and benefits from a 24hr concierge service.

Close proximity to Pudding Mill Lane DLR and Bow Road tube stations makes this flat ideal for access to Canary Wharf or The City.

Bars, restaurants, Queen Mary University and the Olympic Stadium are all close by.







8th floor

Thomas Frye Court High Street, E15

Total Gross Area: 518 ft² ... 48.1 m² (excluding balcony)

All measurements are approximate and for identification guideline purposes only, not to scale.
Compliant with the RICS code of measuring practice

Energy Efficiency Rating		Current	Potential
Very energy efficient - lower running costs			
(92 plus) A			
(81-91) B			
(69-80) C			
(55-68) D			
(39-54) E			
(21-38) F			
(1-20) G			
Not energy efficient - higher running costs			
England & Wales		EU Directive 2002/91/EC	

Environmental Impact (CO ₂) Rating		Current	Potential
Very environmentally friendly - lower CO ₂ emissions			
(92 plus) A			
(81-91) B			
(69-80) C			
(55-68) D			
(39-54) E			
(21-38) F			
(1-20) G			
Not environmentally friendly - higher CO ₂ emissions			
England & Wales		EU Directive 2002/91/EC	

Viewing

Strictly by appointment with:
Coopers of London, 22 Cleveland Street,
Fitzrovia, London W1T 4JB
info@coopersoflondon.co.uk

0207 580 9658

These particulars, whilst believed to be accurate are set out as a general outline only for guidance and do not constitute any part of an offer or contract. Intending purchasers should not rely on them as statements or representation of fact, but must satisfy themselves by inspection or otherwise as to their accuracy. No person in this firm's employment has the authority to make or give any representation or warranty in respect of the property.