



Mary Rose Square, SE16 7EL
Offers In Excess Of £500,000

coopers
OF LONDON EST. 1986

Mary Rose Square, SE16

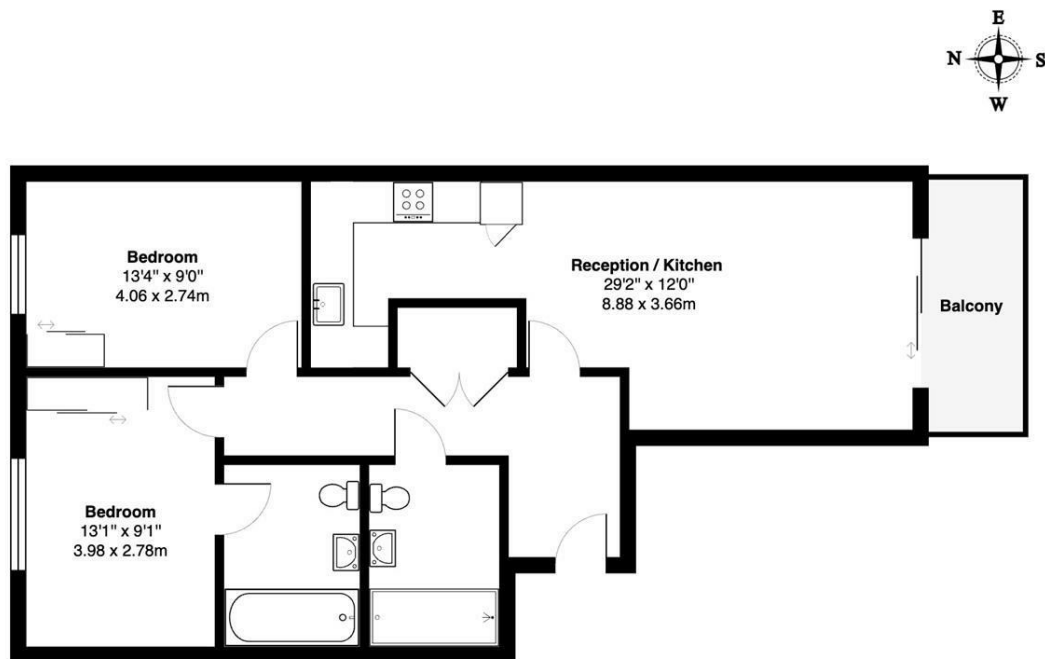
- Two double bedrooms
- Spacious reception room
- Open plan kitchen
- Private balcony
- 24 hour concierge
- Fitness and leisure suite

Two double bedroom apartment in the vibrant Marine Wharf development, located minutes from Canada Water station. Situated on the first floor the apartment benefits from spacious reception room, fully fitted kitchen, one en-suite bathroom and main family bathroom.

The complex comes complete with on-site amenities including a 24-hour concierge service, a residents` fitness and leisure suite. The apartment is inspired by maritime influences throughout and finished to a very high specification.







Baroque Gardens, Mary Rose Square, SE16

Total Gross Area: 792 ft² ... 73.5 m² (excluding balcony)

All measurements are approximate and for identification guideline purposes only, not to scale.
Compliant with the RICS code of measuring practice

Energy Efficiency Rating		
	Current	Potential
Very energy efficient - lower running costs		
(92 plus) A		
(81-91) B		
(69-80) C		
(55-68) D		
(39-54) E		
(21-38) F		
(1-20) G		
Not energy efficient - higher running costs		
England & Wales	EU Directive 2002/91/EC	

Environmental Impact (CO ₂) Rating		
	Current	Potential
Very environmentally friendly - lower CO ₂ emissions		
(92 plus) A		
(81-91) B		
(69-80) C		
(55-68) D		
(39-54) E		
(21-38) F		
(1-20) G		
Not environmentally friendly - higher CO ₂ emissions		
England & Wales	EU Directive 2002/91/EC	

Viewing

Strictly by appointment with:
Coopers of London, 22 Cleveland Street,
Fitzrovia, London W1T 4JB
info@coopersonlondon.co.uk

0207 580 9658

These particulars, whilst believed to be accurate are set out as a general outline only for guidance and do not constitute any part of an offer or contract. Intending purchasers should not rely on them as statements or representation of fact, but must satisfy themselves by inspection or otherwise as to their accuracy. No person in this firm's employment has the authority to make or give any representation or warranty in respect of the property.