



Commercial Road, E14 7LG
£330,000

coopers
OF LONDON EST. 1986

Commercial Road, E14

- Spacious second floor one bed apartment
- Open plan kitchen and living area
- Day Concierge
- Key Phone Entry for fully gated development
- Close to Transport Link

Excellent one bedroom apartment in a modern development in Limehouse E14.

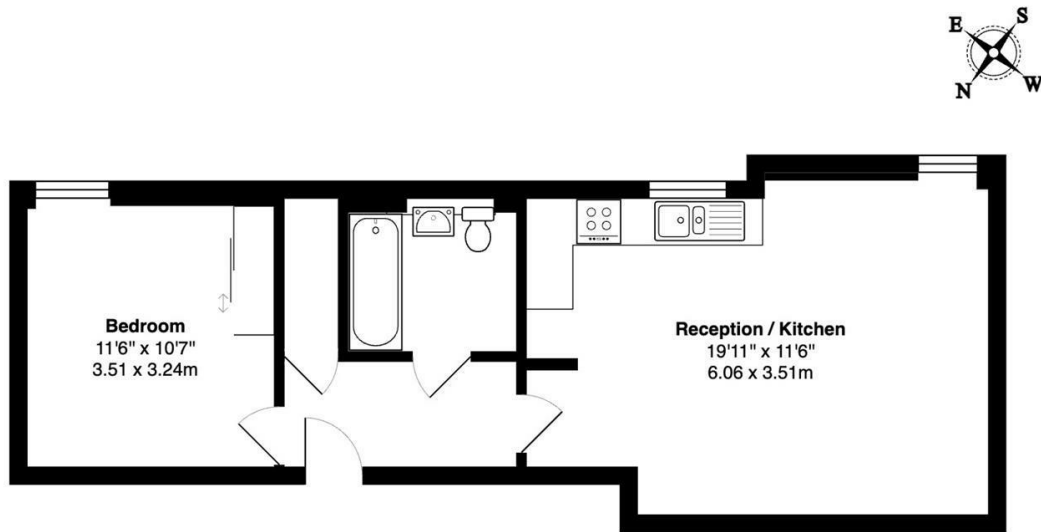
The flat comprises: large open plan living area / kitchen, double bedroom with built in storage, bath/shower room and entrance hall.

Tequila Wharf is a popular development situated opposite Limehouse Marina and benefits from friendly security and concierge service.

Very close to Limehouse DLR and national rail station, ideal for access to Canary Wharf and The City.







2nd Floor

Tequila Wharf, Commercial Road E14

Total Gross Area: 519 ft² ... 48.2 m²

All measurements are approximate and for identification guideline purposes only, not to scale.
Compliant with the RICS code of measuring practice

Energy Efficiency Rating	Current	Potential
Very energy efficient - lower running costs		
(92 plus) A		
(81-91) B		
(69-80) C		
(55-68) D		
(39-54) E		
(21-38) F		
(1-20) G		
Not energy efficient - higher running costs		
England & Wales	EU Directive 2002/91/EC	

Environmental Impact (CO ₂) Rating	Current	Potential
Very environmentally friendly - lower CO ₂ emissions		
(92 plus) A		
(81-91) B		
(69-80) C		
(55-68) D		
(39-54) E		
(21-38) F		
(1-20) G		
Not environmentally friendly - higher CO ₂ emissions		
England & Wales	EU Directive 2002/91/EC	

Viewing

Strictly by appointment with:
Coopers of London, 22 Cleveland Street,
Fitzrovia, London W1T 4JB
info@coopersonlondon.co.uk

0207 580 9658

These particulars, whilst believed to be accurate are set out as a general outline only for guidance and do not constitute any part of an offer or contract. Intending purchasers should not rely on them as statements or representation of fact, but must satisfy themselves by inspection or otherwise as to their accuracy. No person in this firm's employment has the authority to make or give any representation or warranty in respect of the property.