



Great Newport Street, WC2H 7JE
Asking Price £585,000

coopers
OF LONDON EST. 1986

Great Newport Street, WC2H

- One minute walk to Leicester Square
- Excellent Transport Links
- Walking distance to the West End
- Large Double Bedroom
- Spacious kitchen and bathroom
- Top Floor Apartment

Beautifully finished one bedroom property in a superb location just off Leicester Square.

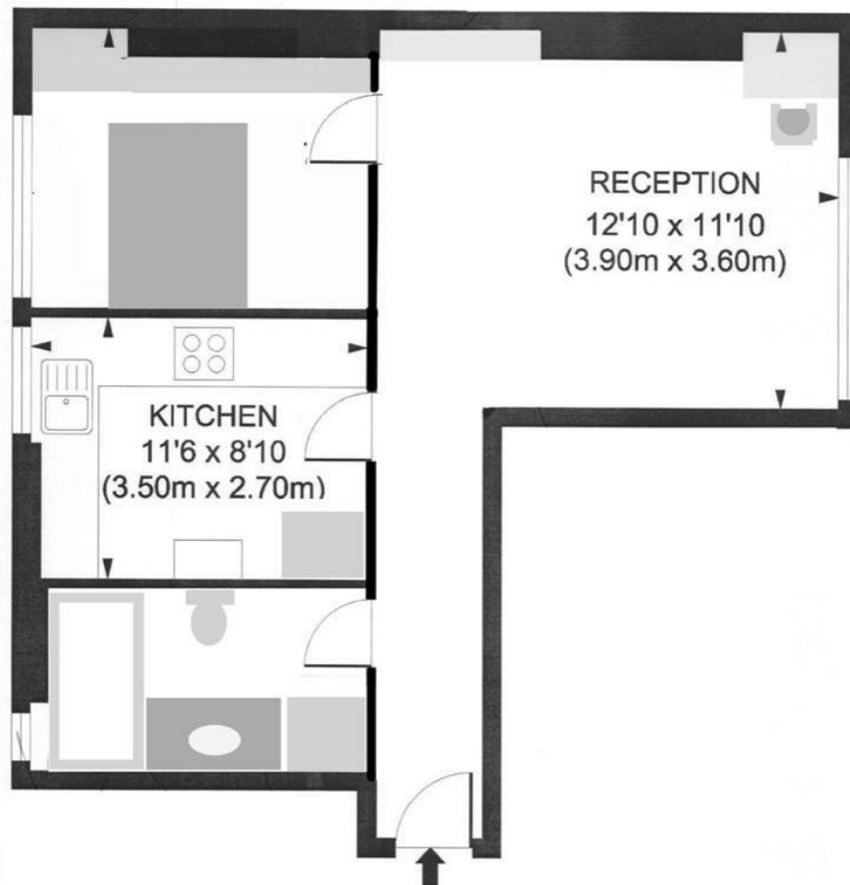
This bright and quiet apartment comprises: Entrance hallway, new bathroom suite, spacious kitchen, large reception room and double bedroom with built in storage.

Newport House is a secure building in the heart of London`s vibrant West-End - Perfectly situated for a huge range of bars, shops, restaurants, cinemas and theatres.

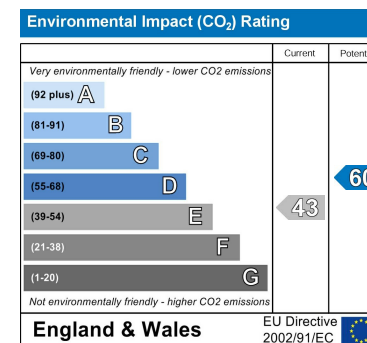
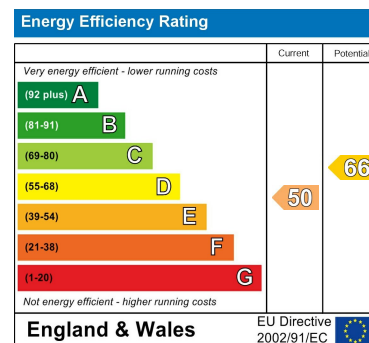
Leicester Square is the nearest tube station, with several others within easy walking distance.







Great Newport Street, WC2H
Gross Internal Area 560 sq ft 52 sq metres



Viewing

Strictly by appointment with:
Coopers of London , 22 Cleveland Street,
Fitzrovia, London W1T 4JB
info@coopersonlondon.co.uk

0207 580 9658

These particulars, whilst believed to be accurate are set out as a general outline only for guidance and do not constitute any part of an offer or contract. Intending purchasers should not rely on them as statements or representation of fact, but must satisfy themselves by inspection or otherwise as to their accuracy. No person in this firms employment has the authority to make or give any representation or warranty in respect of the property.