



Crookham Road, SW6 4EG  
£590,000

coopers  
OF LONDON EST. 1986

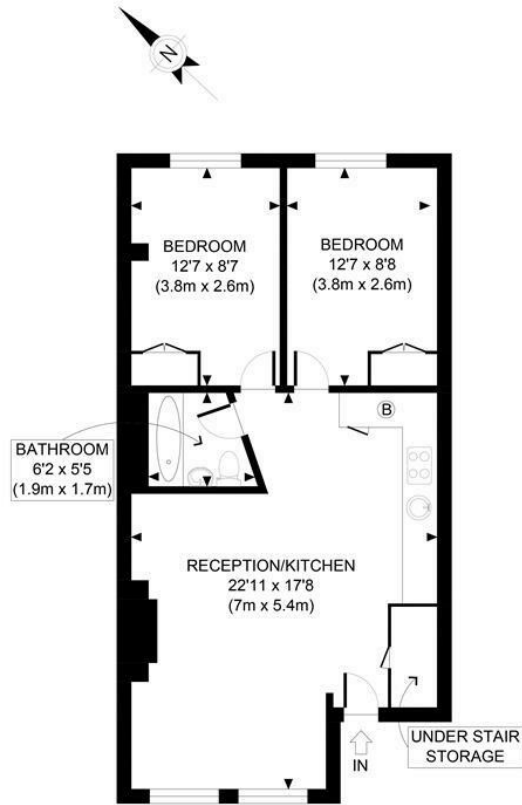


## Crookham Road, SW6

**Large 2 double bedroom unfurnished flat just off the Fulham Road, a short walk from Parson Green Tube Station. The property is in excellent condition on the raised ground floor of a Victorian converted property. There is an open plan sitting room and kitchen. Each of the double bedrooms has built in wardrobes.**







UPPER RAISED FLOOR  
GROSS INTERNAL  
FLOOR AREA 604 SQ FT

APPROX. GROSS INTERNAL FLOOR AREA 604 SQ FT / 56 SQM

Ref: Copyright photoplan

Disclaimer: Floor plan measurements are approximate and are for illustrative purposes only. While we do not doubt the floor plan accuracy and completeness, you or your advisors should conduct a careful, independent investigation of the property in respect of monetary valuation

Energy Efficiency Rating		Current	Potential
Very energy efficient - lower running costs			
(92 plus) A			
(81-91) B			
(69-80) C			
(55-68) D			
(39-54) E			
(21-38) F			
(1-20) G			
Not energy efficient - higher running costs			
England & Wales	EU Directive 2002/91/EC		

Environmental Impact (CO <sub>2</sub> ) Rating		Current	Potential
Very environmentally friendly - lower CO <sub>2</sub> emissions			
(92 plus) A			
(81-91) B			
(69-80) C			
(55-68) D			
(39-54) E			
(21-38) F			
(1-20) G			
Not environmentally friendly - higher CO <sub>2</sub> emissions			
England & Wales	EU Directive 2002/91/EC		

## Viewing

Strictly by appointment with:  
Coopers of London, 22 Cleveland Street,  
Fitzrovia, London W1T 4JB  
[info@coopersonlondon.co.uk](mailto:info@coopersonlondon.co.uk)

**0207 580 9658**

These particulars, whilst believed to be accurate are set out as a general outline only for guidance and do not constitute any part of an offer or contract. Intending purchasers should not rely on them as statements or representation of fact, but must satisfy themselves by inspection or otherwise as to their accuracy. No person in this firm's employment has the authority to make or give any representation or warranty in respect of the property.