



Commercial Road, Limehouse, E14 7LG  
No Offers £260,000

coop  
OF LONDON  
EST. 1986



# Commercial Road, Limehouse, E14

- Spacious double bedroom apartment
- Ground floor in gated complex
- Close to transport links
- Double bedroom
- Day Concierge

**Excellent one bedroom apartment in a modern development in Limehouse E14.**

**This ground floor flat comprises: open plan living area / kitchen, double bedroom with built in storage, bath/shower room and entrance hall.**

**Tequila Wharf is a popular development situated opposite Limehouse Marina and benefits from excellent security and concierge service.**

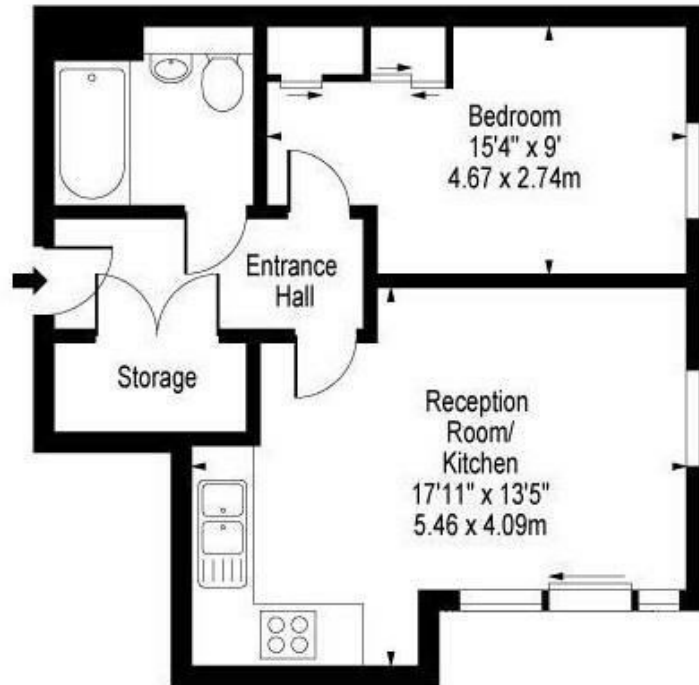
**Very close to Limehouse DLR and national rail station, ideal for access to Canary Wharf and The City.**







Tequila Wharf,  
Commercial Road, E14 7LG



Approx Gross Internal Area **461 Sq Ft - 42.83 Sq M**  
For Illustration Purposes Only - Not To Scale

Energy Efficiency Rating		
	Current	Potential
Very energy efficient - lower running costs		
(92 plus) <b>A</b>		
(81-91) <b>B</b>		
(69-80) <b>C</b>		
(55-68) <b>D</b>		
(39-54) <b>E</b>		
(21-38) <b>F</b>		
(1-20) <b>G</b>		
Not energy efficient - higher running costs		
<b>England &amp; Wales</b>	EU Directive 2002/91/EC	

Environmental Impact (CO <sub>2</sub> ) Rating		
	Current	Potential
Very environmentally friendly - lower CO <sub>2</sub> emissions		
(92 plus) <b>A</b>		
(81-91) <b>B</b>		
(69-80) <b>C</b>		
(55-68) <b>D</b>		
(39-54) <b>E</b>		
(21-38) <b>F</b>		
(1-20) <b>G</b>		
Not environmentally friendly - higher CO <sub>2</sub> emissions		
<b>England &amp; Wales</b>	EU Directive 2002/91/EC	

## Viewing

Strictly by appointment with:  
Coopers of London , 22 Cleveland Street,  
Fitzrovia, London W1T 4JB  
[info@coopersoflondon.co.uk](mailto:info@coopersoflondon.co.uk)

**0207 580 9658**

These particulars, whilst believed to be accurate are set out as a general outline only for guidance and do not constitute any part of an offer or contract. Intending purchasers should not rely on them as statements or representation of fact, but must satisfy themselves by inspection or otherwise as to their accuracy. No person in this firms employment has the authority to make or give any representation or warranty in respect of the property.