

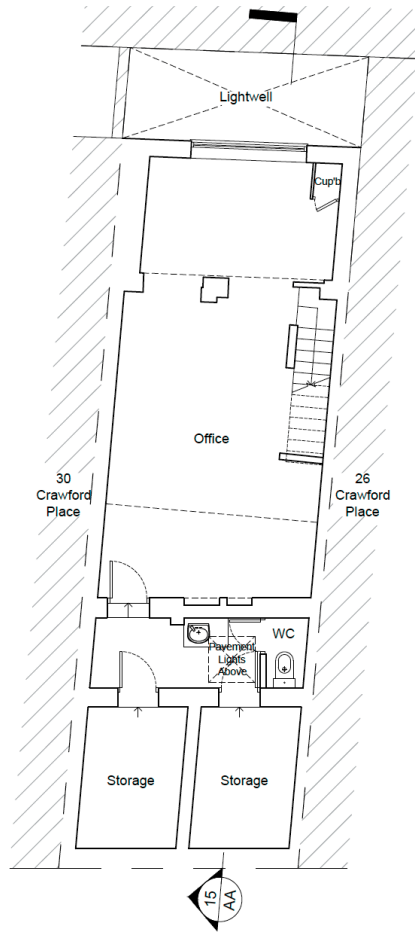




We're pleased to offer this Class E shop to lease. The premises consists of ground floor and lower ground floor. It's would suit any operator who looking to start or expand their existing business in W1 area. Situated in Marylebone, near Edgware Road and Marylebone Station, a few hundred yards away from the famous Marble Arch and walking distance from Hyde Park.

We're pleased to offer this Class E shop to lease. The premises consists of ground floor and lower ground floor. It's would suit any operator who looking to start or expand their existing business in W1 area.

Situated in Marylebone, near Edgware Road and Marylebone Station, a few hundred yards away from the famous Marble Arch and walking distance from Hyde Park.



Basement Floor Plan  
as Existing

