



HARVEY ROBINSON

Offers In Excess Of
£400,000

Nightingale Way
St Neots, PE19 1UQ

PROPERTY SUMMARY

Harvey Robinson estate agents are delighted to offer for sale with no onward chain, this three bedroom detached, extended home located in the highly desirable Birdlands Estate.

Being close to the train station, popular schools and Priory Park, this wonderful home comprises of a large entrance hall with understairs storage, a 23ft open plan lounge and dining room with sliding doors leading onto the bright and airy conservatory, which you can also access through the kitchen. Being thoughtfully extended, you will also find a study/family room and downstairs shower room. Upstairs boasts three bedrooms, with the main bedroom including built in wardrobes, a family bathroom and separate toilet.

To the rear of the property lies a mature, private garden and to the front a garage and off road parking.

3 

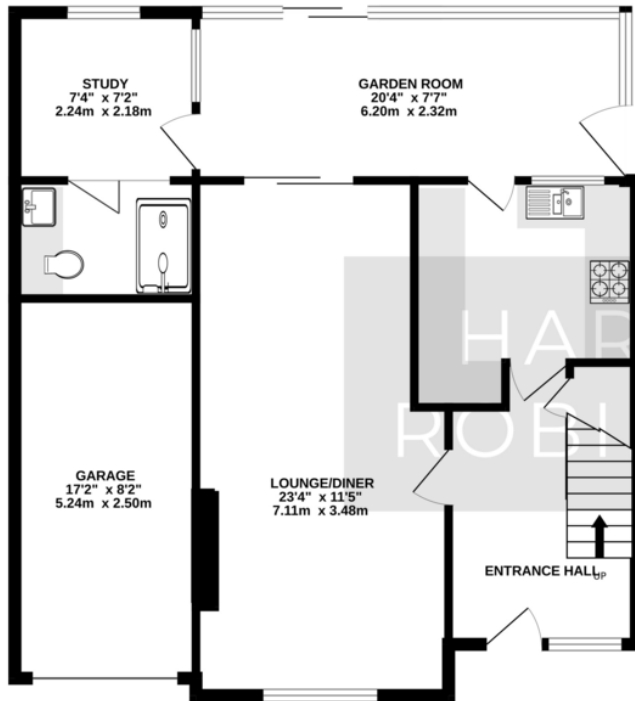
2 

2 

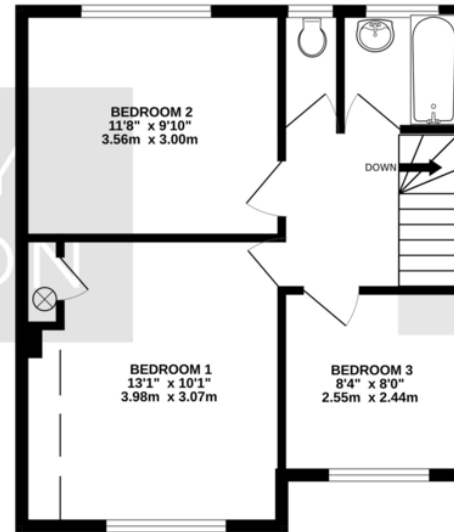




GROUND FLOOR
835 sq.ft. (77.5 sq.m.) approx.



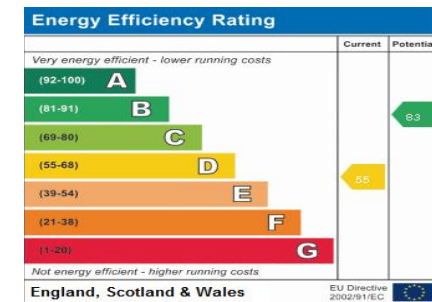
1ST FLOOR
445 sq.ft. (41.3 sq.m.) approx.



TOTAL FLOOR AREA : 1279 sq.ft. (118.9 sq.m.) approx.
Made with Metropix ©2024

FAQs

Tenure: Freehold
 Built: 1971
 Primary School: Priory Infants/Juniors
 Secondary School: Longsands
 Council Tax: Band D
 Vendor's Onward Movements: No Onward Chain
 Loft: Part Boarded with Ladder
 What3Words Location: ///coiling.held.hoped



Agents Note: Whilst every care has been taken to prepare these particulars, they are for guidance purposes only. All measurements are approximate and are for general guidance purposes only and whilst every care has been taken to ensure their accuracy, they should not be relied upon and potential buyers/tenants are advised to recheck the measurements

HARVEY ROBINSON

OFFICE ADDRESS

22 Market Square, St Neots,
Cambridgeshire, PE19 2AF

CONTACT

01480 454040
stneots@harveyrobinson.co.uk
www.harveyrobinson.co.uk