



HARVEY ROBINSON

Offers In Excess Of
£250,000
Luke Street
Eynesbury, PE19 2TW

PROPERTY SUMMARY

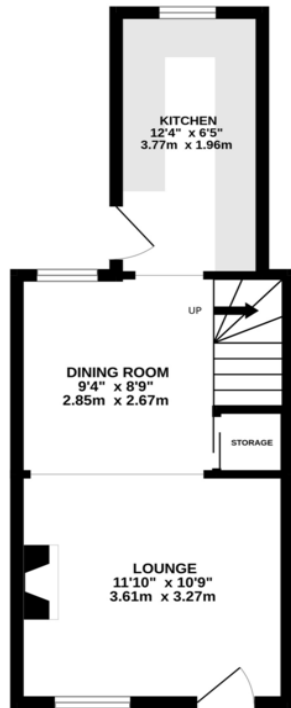
Harvey Robinson estate agents in St Neots are proud to be offering this wonderful two bedroom character cottage in the heart of old Eynesbury, conveniently located within walking distance to town and surrounding amenities.

The property boasts an open plan lounge and dining space, which flows through nicely into the kitchen on the ground floor. Upstairs you will find two fair size bedrooms and the bathroom. Outside, you will find an enclosed rear garden which benefits from an outside studio, leading opportunity for extra storage or a work from home space. This wonderful cottage would be an ideal first time purchase or would work well for someone who is looking to downsize.

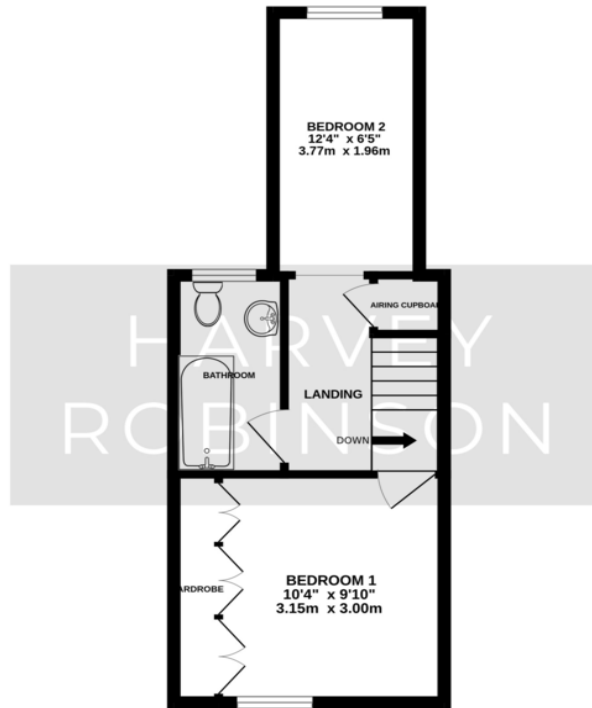




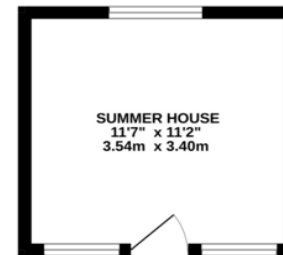
GROUND FLOOR
311 sq.ft. (28.9 sq.m.) approx.



1ST FLOOR
316 sq.ft. (29.3 sq.m.) approx.



SUMMER HOUSE
130 sq.ft. (12.0 sq.m.) approx.



TOTAL FLOOR AREA : 756 sq.ft. (70.2 sq.m.) approx.
Made with Metropix ©2025

FAQs

Tenure: Freehold

EPC: D

Property Built: Approx 1910's

Onward Movements: No Onward Chain

Primary School: Eynesbury CofE C Primary School

Secondary School: Ernulf Academy

Council Tax: Band A

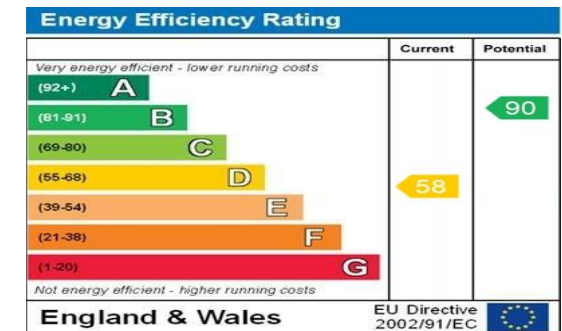
Loft: Fitted Ladder

Water Meter: Yes

What3words: ///irritable.elbowing.draw

Need to sell your property? Please contact us to arrange your free, no obligation Market Appraisal.

For independent whole of market mortgage advice please call the team to book your appointment.



Agents Note: Whilst every care has been taken to prepare these particulars, they are for guidance purposes only. All measurements are approximate and are for general guidance purposes only and whilst every care has been taken to ensure their accuracy, they should not be relied upon and potential buyers/tenants are advised to recheck the measurements

HARVEY ROBINSON

OFFICE ADDRESS

22 Market Square, St Neots,
Cambridgeshire, PE19 2AF

CONTACT

01480 454040
stneots@harveyrobinson.co.uk
www.harveyrobinson.co.uk