



HARVEY ROBINSON

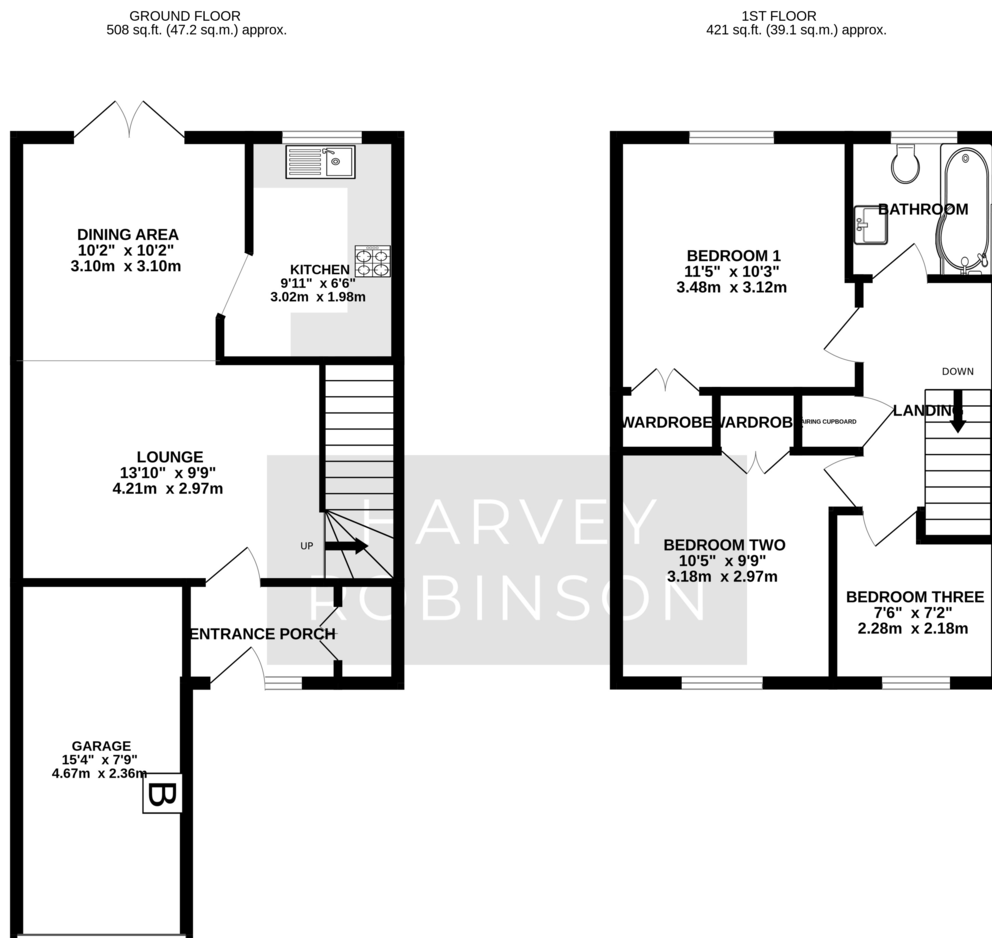
Offers In Excess Of
£300,000
Raleigh Close
Eaton Socon, PE19 8NN

PROPERTY SUMMARY

Harvey Robinson estate agents in St Neots are delighted to be marketing this well presented three-bedroom end of terrace home located in the popular area of Eaton Socon. The accommodation comprises of an entrance porch, lounge/diner, re-fitted kitchen, three bedrooms, and a family bathroom that has been updated by the current owners. Externally there is off-road parking, a single integral garage and an enclosed rear garden. The property would make an ideal first-time purchase and viewings can be arranged by contacting our St Neots branch.

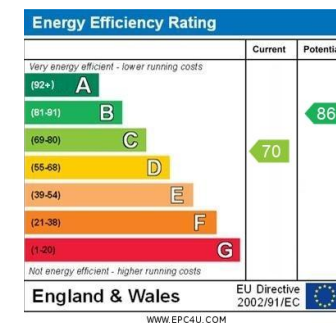






FAQs

Postcode for SatNav: PE19 8NN
 What3words location:
 ///behalf.physical.vampire
 Vendors onward movements: Upsizing locally
 Property Built: 1980's
 Loft: Part Boarded, no light or ladder
 Water meter: Yes
 Council tax: C
 Garden aspect: West facing



Agents Note: Whilst every care has been taken to prepare these particulars, they are for guidance purposes only. All measurements are approximate and are for general guidance purposes only and whilst every care has been taken to ensure their accuracy, they should not be relied upon and potential buyers/tenants are advised to recheck the measurements

HARVEY ROBINSON

OFFICE ADDRESS

22 Market Square, St Neots,
Cambridgeshire, PE19 2AF

CONTACT

01480 454040
 stneots@harveyrobinson.co.uk
 www.harveyrobinson.co.uk