



HARVEY ROBINSON

Offers In Excess Of
£315,000

Andrew Road
Eynesbury, PE19 2QE

PROPERTY SUMMARY

Harvey Robinson estate agents in St Neots are delighted to be marketing this extended three-bedroom semi-detached home located in Eynesbury. The property is offered for-sale with no onward chain and is conveniently located opposite Middlefield primary school. The accommodation comprises of an entrance porch, hallway, large lounge/diner, extended kitchen and WC to the ground floor. To the first floor there are three bedrooms and a bathroom. Outside the property there is a low maintenance enclosed rear garden, off-road parking and a double garage that has been partially converted. Please contact our St Neots branch to arrange a viewing.





FAQs

Postcode for SatNav: PE19 2QE

What3Words location:

///normal.goggles.reception

Council tax: C

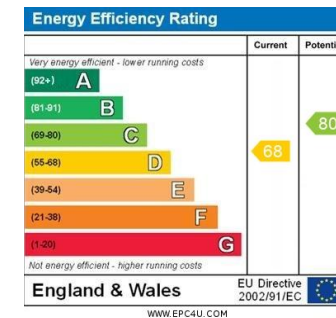
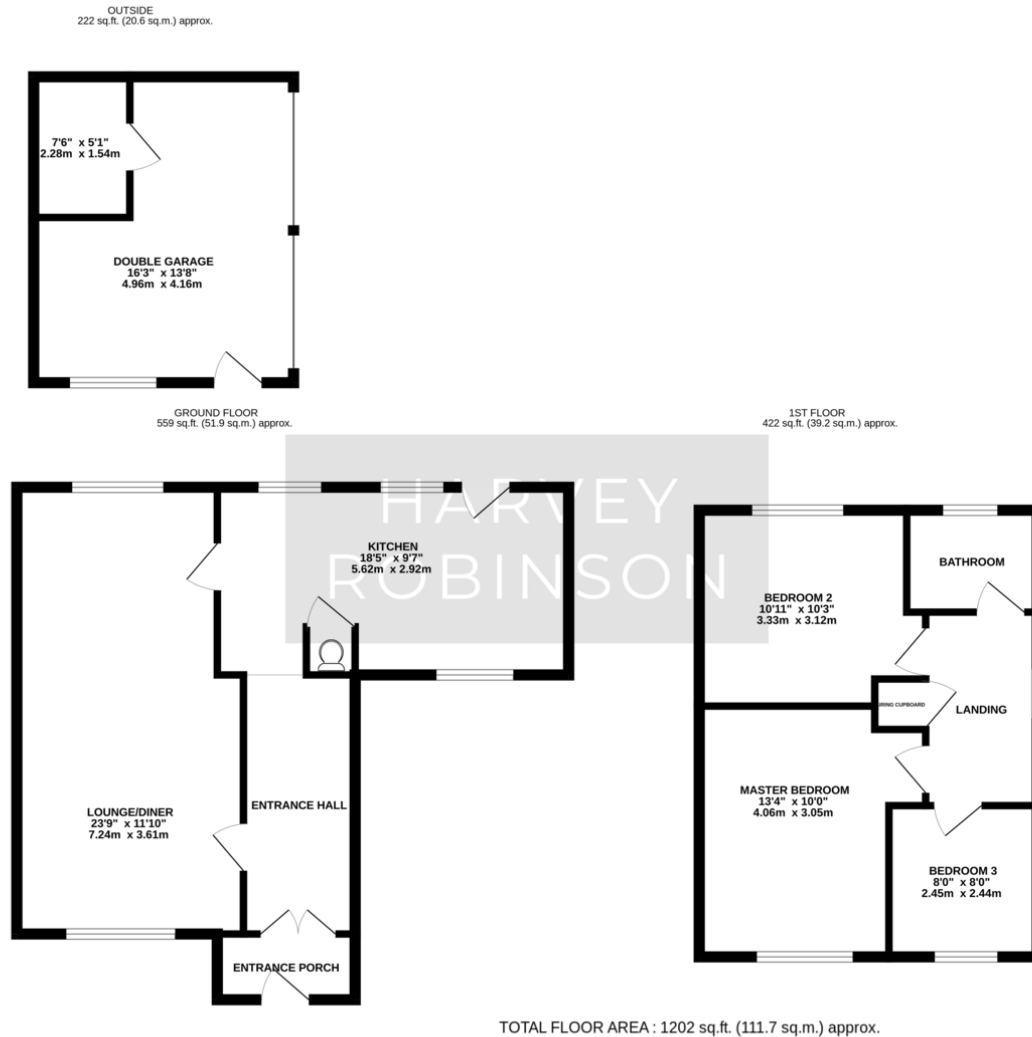
Garden aspect: West

Primary school catchment: Middlefield

How long have the owners owned the property: Since 2016

Boiler: located in the loft

Vendors onward movements: Not buying on



Agents Note: Whilst every care has been taken to prepare these particulars, they are for guidance purposes only. All measurements are approximate and are for general guidance purposes only and whilst every care has been taken to ensure their accuracy, they should not be relied upon and potential buyers/tenants are advised to recheck the measurements

HARVEY ROBINSON

OFFICE ADDRESS

22 Market Square, St Neots,
Cambridgeshire, PE19 2AF

CONTACT

01480 454040
stneots@harveyrobinson.co.uk
www.harveyrobinson.co.uk