

A photograph of a two-story brick house with a blue garage door and a large tree in the foreground. The house is made of red brick and has a white door and windows. A large tree with green leaves is on the left side of the house. A blue garage door is on the right side of the house. The house is surrounded by a green lawn and a gravel driveway. The sky is blue with some clouds.

HARVEY ROBINSON

£550,000

31 Wilkinson Close

Eaton Socon, PE19 8HJ

## PROPERTY SUMMARY

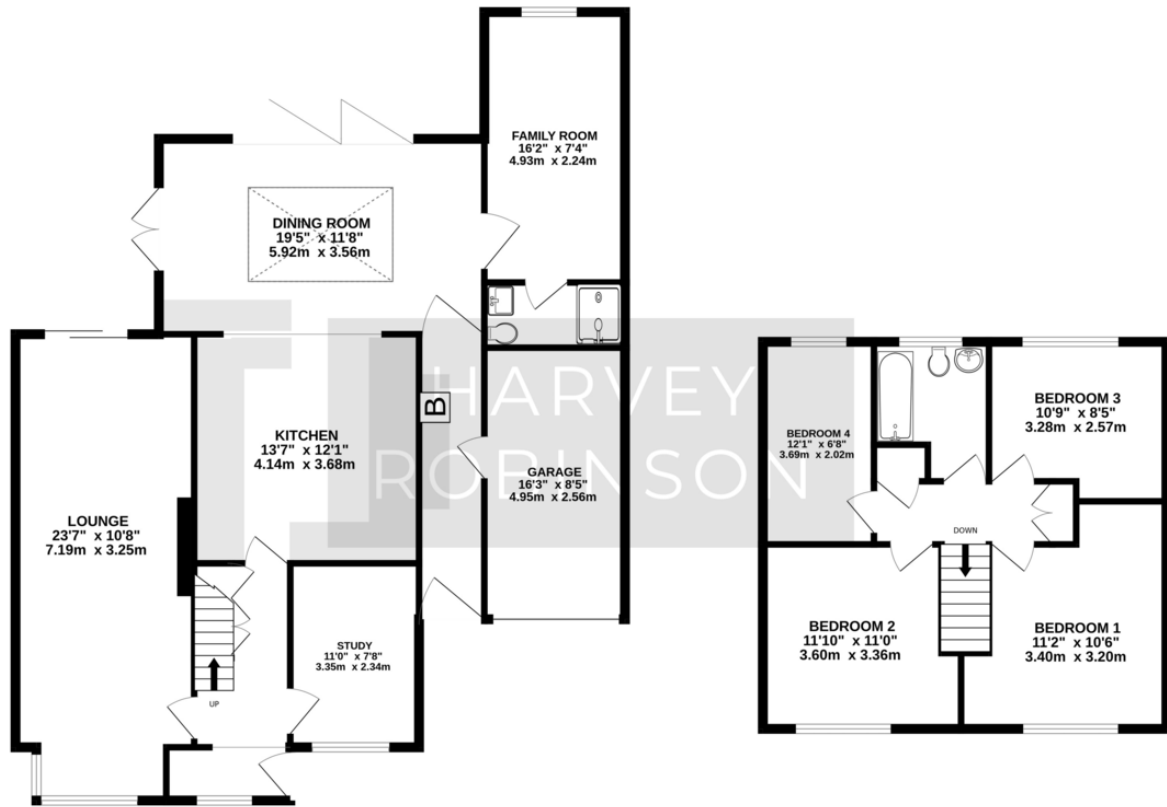
Harvey Robinson estate agents in St Neots are delighted to be marketing this spacious family home located in a quiet cul-de-sac within proximity of many local amenities in the popular Eaton Socon area. The property has been extended and updated by the current owners although there is still some updating required in places. The accommodation comprises of an entrance porch, hallway, study, 23ft bay fronted lounge, re-fitted kitchen opening to a large dining area with bi-fold doors opening on to the rear garden, and a family room with a door leading to a downstairs shower room. The family room and shower room could be utilised as a 5th bedroom with en-suite for those requiring a downstairs bedroom. To the first floor there are four bedrooms, and a family bathroom. Outside the property occupies a large plot with off-road parking to the front that leads to a single integral garage. To the rear there is an enclosed private garden. Please contact our St Neots branch to arrange a viewing.





GROUND FLOOR  
1236 sq.ft. (114.8 sq.m.) approx.

1ST FLOOR  
557 sq.ft. (51.7 sq.m.) approx.



TOTAL FLOOR AREA: 1793 sq.ft. (166.6 sq.m.) approx.  
Made with Metropix ©2024

## FAQs

Postcode for SatNav: PE19 8HJ

What3Words Location:

///twitching.react.wisely

Tenure: Freehold

EPC: C

Onward Movements: Vendor will be buying on

Rear Garden: West Facing

Primary School: Bushmead & Crosshall

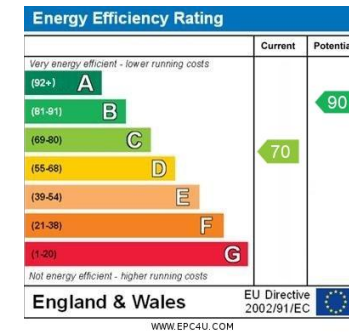
Secondary School: Ernulf

Council Tax: Band D

Loft: Boarded

Water Meter: No

Boiler: 5 years old, serviced 2022



Agents Note: Whilst every care has been taken to prepare these particulars, they are for guidance purposes only. All measurements are approximate and are for general guidance purposes only and whilst every care has been taken to ensure their accuracy, they should not be relied upon and potential buyers/tenants are advised to recheck the measurements

HARVEY ROBINSON

### OFFICE ADDRESS

22 Market Square, St Neots,  
Cambridgeshire, PE19 2AF

### CONTACT

01480 454040  
stneots@harveyrobinson.co.uk  
www.harveyrobinson.co.uk