



HARVEY ROBINSON

Offers In Excess Of
£315,000

Carisbrooke Way
Eynesbury, PE19 2SP

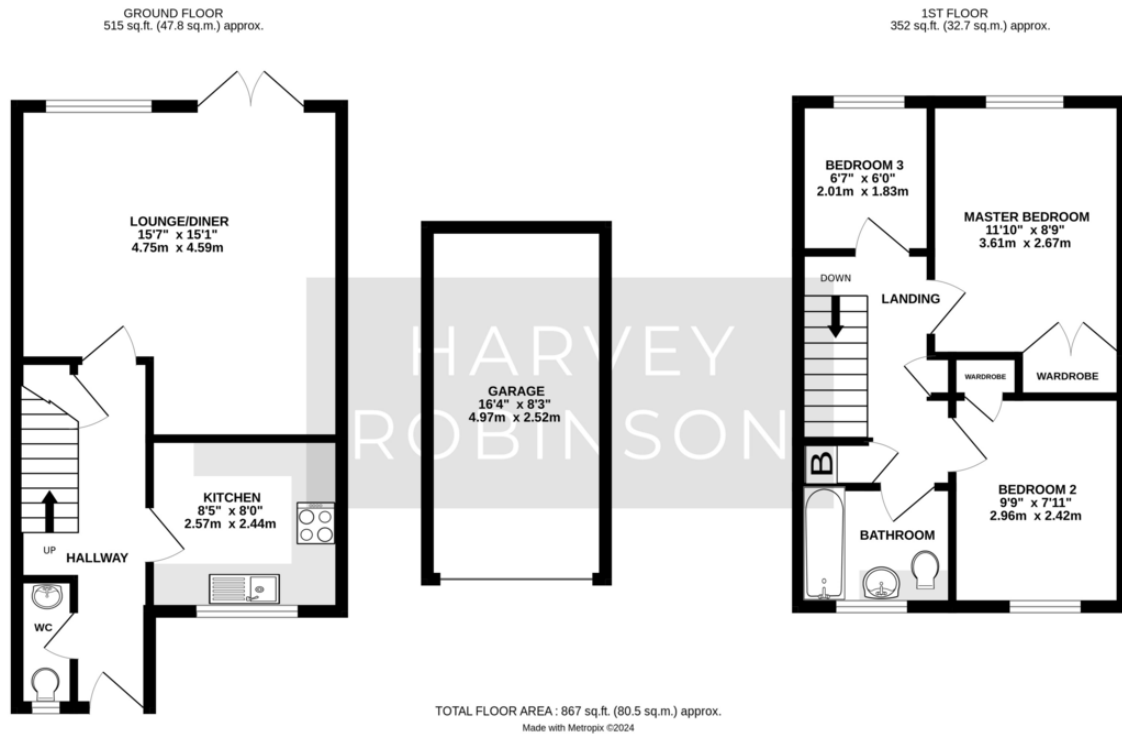
PROPERTY SUMMARY

Harvey Robinson Estate Agents in St Neots are pleased to offer for sale this well-presented semi-detached family home, benefitting from a garage with power connected, and spacious driveway with off-road parking for several cars. The property is well situated within a quiet cul-de-sac in the popular Parklands estate near the Marina and Conservation Area.

The ground floor accommodation includes a spacious entrance hall, cloakroom, bright and airy lounge/diner with doors leading out to the south-facing rear garden, and a modern kitchen. Upstairs there are two double bedrooms, a single bedroom and a bathroom. The property has been redecorated throughout, and a new gas central heating system was installed approximately 6 years ago, making it move-in ready home for its new owners.







FAQs

Built: 1989

Council Tax: Band C

EPC: C

Tenure: Freehold

Vendor's Onward Movements: Upsizing Locally

Primary School Catchment: Middlefield

Secondary School Catchment: Ernulf

Rear Garden Aspect: South

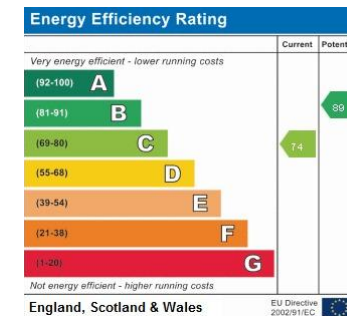
Loft: Part Boarded

Boiler: Combi, Installed 2016

Water Meter: Yes

What3Words Location: ///unloads.oasis.deliver

Estimated Rental Income: £1,100-1,200 pcm



Agents Note: Whilst every care has been taken to prepare these particulars, they are for guidance purposes only. All measurements are approximate and are for general guidance purposes only and whilst every care has been taken to ensure their accuracy, they should not be relied upon and potential buyers/tenants are advised to recheck the measurements

HARVEY ROBINSON

OFFICE ADDRESS

22 Market Square, St Neots,
Cambridgeshire, PE19 2AF

CONTACT

01480 454040
stneots@harveyrobinson.co.uk
www.harveyrobinson.co.uk