



HARVEY ROBINSON

Offers In Excess Of
£325,000

Summers Hill Drive
Papworth Everard, CB23 3AA

- Three / Four Bedroom Home
- Off Road Parking
- En-Suite To Bedroom One
- West Facing Garden

- Well Presented Throughout
- Popular Village Location
- Open Plan Family Room/ Kitchen
- Viewing Highly Recommended

3 

2 

2 



Harvey Robinson estate agents in St Neots are delighted to offer for sale this three/ four bedroom home located in the sought after Summers Hill Drive development of Papworth Everard.

The property is spread generously over three floors. To the ground floor you will find a welcoming entrance hall, downstairs cloakroom, a reception room which leaves opportunity for a study or a ground floor bedroom, following through to the open plan kitchen/ family room which has UPVC double doors out into the garden. A bright and airy lounge and the main bedroom with an en-suite shower room and built in wardrobes can be found on the first floor. Finishing off with the second floor, you have two double bedrooms and the family bathroom. Outside, the property boasts a well maintained west facing garden as well as a carport and off road parking for two.

To arrange a viewing, please contact the St Neots office on 01480 454040 option 2.



LOCATION

Centrally located between the popular market towns of St. Neots, St Ives and Huntingdon, and approximately 12 miles from the City of Cambridge, Papworth Everard is an ever-popular location for commuters wanting a quieter Village lifestyle. Papworth is served by popular school catchments, Pendragon Primary School and Swavesey Village College. The Village also benefits from two nurseries and a pre-school. Further amenities for families include play parks, and the highly popular Splash Park which features a shallow outdoor pool, perfect for hot summer days.

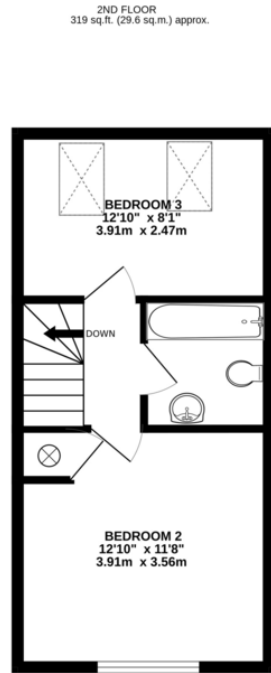
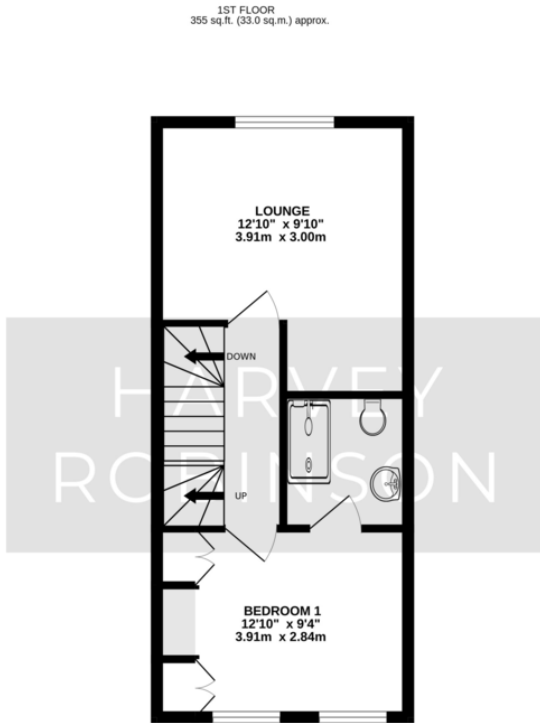
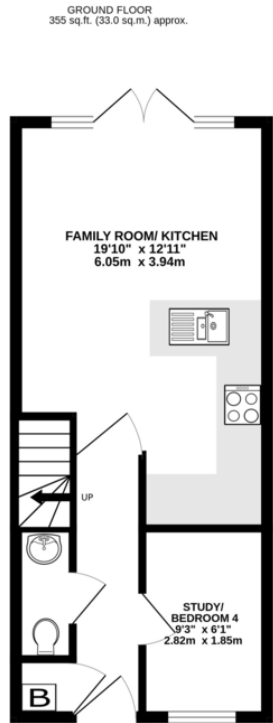
A small parade of shops provides a central hub for the Village, including a convenience store, post office, veterinary surgery, chip shop, deli, library, hair and beauty salon, and coffee shop/micro pub. Papworth further benefits from a combined pharmacy and doctor's surgery, playing fields and an award winning Indian restaurant. For the sports enthusiasts, Papworth has community running and cycling clubs. King George's Playing Field and Pavilion (in memorial to King George V) provides football and cricket pitches, a bowling green, and floodlit tennis courts. Papworth offers a perfect combination of a quiet village lifestyle and easy access to major road links, train stations and amenities, making it the ideal location for commuters and families alike.











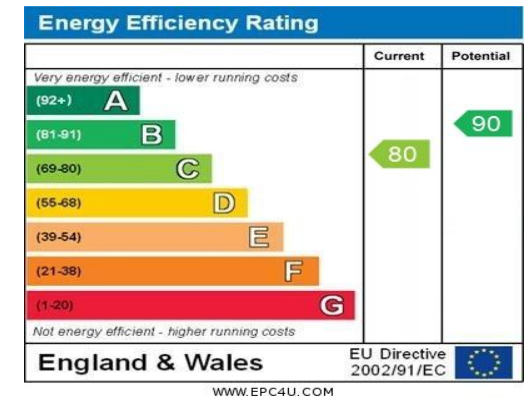
TOTAL FLOOR AREA : 1029 sq.ft. (95.6 sq.m.) approx.
Made with Metropix ©2024

FAQs

Tenure: Freehold
EPC: C
Property Built: 2012
Onward Mov ements: Upsizing Locally
Rear Garden: West Facing
Primary School: Pendragon Primary School
Secondary School: Swavesey Village College
Council Tax: Band D
Loft: Fitted Ladder & Light
Water Meter: No
What3Words: //f actually .eating.dance
Estate Management Charge : £367.92 Per Annum

Please note we have not tested any apparatus, fixtures, fittings, or services. Interested parties must undertake their own investigation into the working order of these items. All measurements are approximate, and photographs provided for guidance only.

Need to sell your property? Please contact us to arrange your free, no obligation Market Appraisal.



Agents Note: Whilst every care has been taken to prepare these particulars, they are for guidance purposes only. All measurements are approximate and are for general guidance purposes only and whilst every care has been taken to ensure their accuracy, they should not be relied upon and potential buyers/tenants are advised to recheck the measurements

HARVEY ROBINSON

OFFICE ADDRESS

22 Market Square, St Neots,
Cambridgeshire, PE19 2AF

CONTACT

01480 454040
stneots@harveyrobinson.co.uk
www.harveyrobinson.co.uk