



HARVEY ROBINSON

£440,000

Wilcox Drive

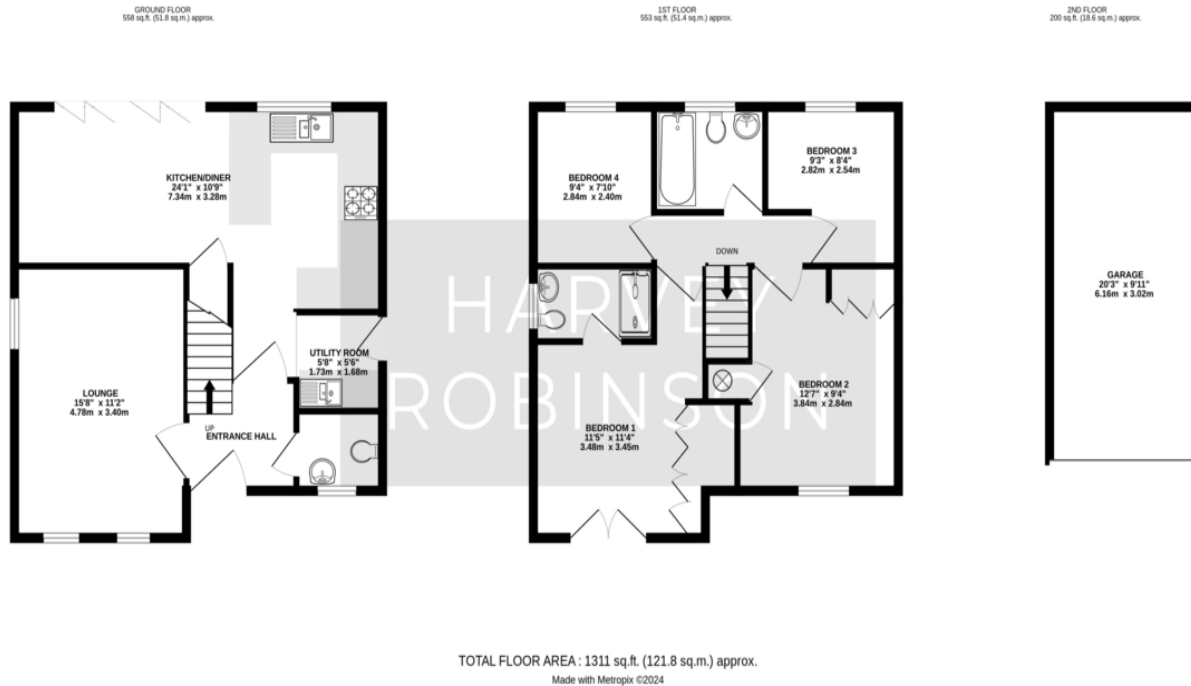
St. Neots, PE19 0AE

PROPERTY SUMMARY

Harvey Robinson estate agents in St Neots are delighted to offer for sale this beautiful four bedroom detached home located in the up and coming Wintringham development, which benefits from lovely green spaces and is conveniently located nearby to local amenities, the train station with commuter links to Kings Cross and St Pancras, as well as schools, making it the perfect family home. Well presented throughout, the property comprises of an entrance hall, downstairs cloakroom, lounge, utility room and an open plan kitchen/ diner, with bi-fold doors out onto the rear garden. Upstairs you will find four bedrooms, the main bedroom boasting an en-suite and built in wardrobes, and the family bathroom. Outside you will find a garden mostly laid to lawn to the rear, and a driveway and garage with power to the front. Built in 2022, this property is immaculate and ready to move in. To arrange a viewing please contact the St Neots office on 01480 454040 option 2.







FAQs

Tenure: Freehold
 Property Built: 2022
 Rear Garden Aspect: East
 Boiler: 2022
 Primary School: Wintringham Primary Academy
 Secondary School: Ernulf Academy
 Council Tax Band: E
 What3Words Location: ///smelter.insisting.lyricism
 Water Meter: Yes

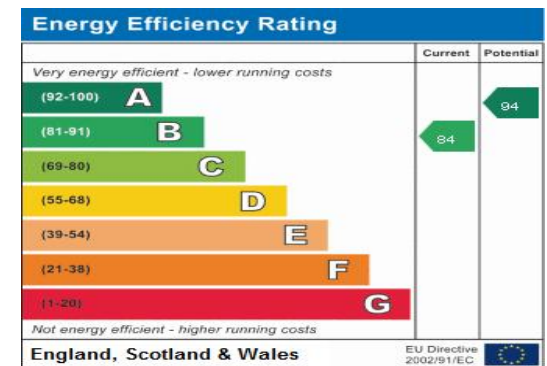
Please note we have not tested any apparatus, fixtures, fittings, or services. Interested parties must undertake their own investigation in the working order of these items. All measurements are approximate, and photographs provided for guidance only.

Need to sell your property? Please contact us to arrange your free, no obligation Market Appraisal.

For independent whole of market mortgage advice please call the team to book your appointment.

View all our properties at harveyrobinson.co.uk

Rated 5.0 on Google Reviews
 Rated Excellent in Best Estate Agent Guide
 Gold Award - allagents



Agents Note: Whilst every care has been taken to prepare these particulars, they are for guidance purposes only. All measurements are approximate and are for general guidance purposes only and whilst every care has been taken to ensure their accuracy, they should not be relied upon and potential buyers/tenants are advised to recheck the measurements.

HARVEY ROBINSON

OFFICE ADDRESS

22 Market Square, St Neots,
 Cambridgeshire, PE19 2AF

CONTACT

01480 454040
stneots@harveyrobinson.co.uk
www.harveyrobinson.co.uk