



HARVEY ROBINSON

Offers In Excess Of
£475,000

8 Stevenson Court
Eaton Ford, PE19 7LF

PROPERTY SUMMARY

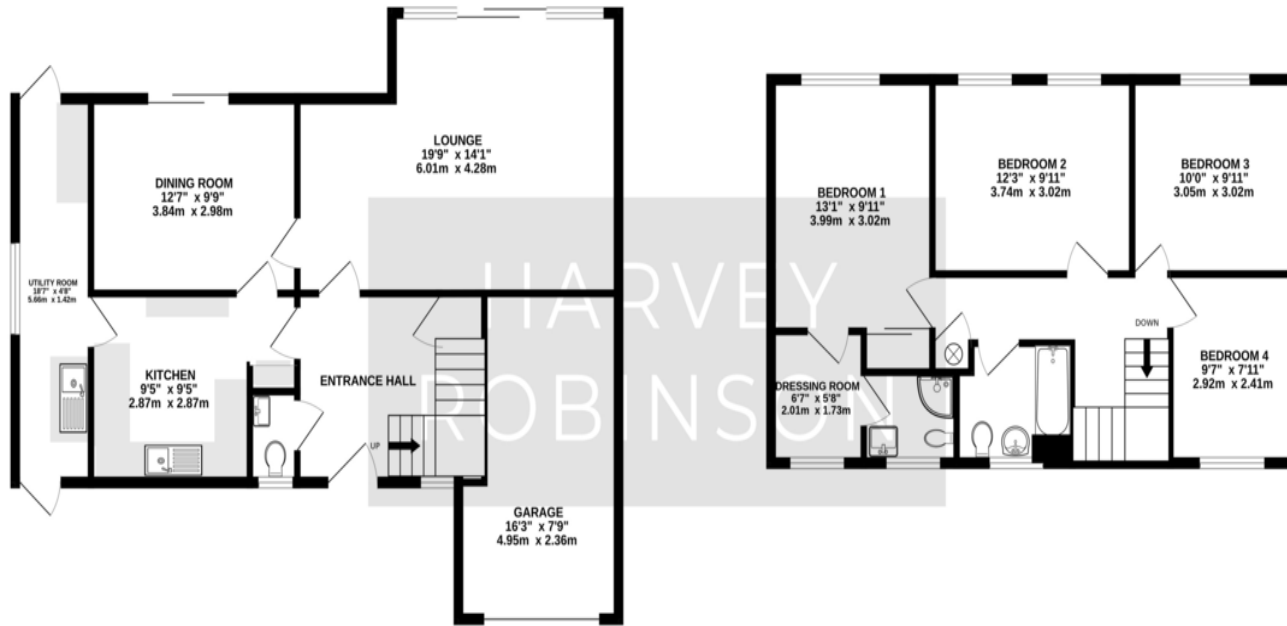
Harvey Robinson estate agents in St Neots are delighted to offer for sale this four bedroom detached home, ideally located just a short walk to the town centre, riverside walks, and popular schools. The property offers spacious accommodation throughout and comprises of a large entrance hall, cloakroom, kitchen with a utility to the side, a separate dining room, and lounge with large windows and sliding patio doors, offering lovely views of the well maintained south facing garden. Upstairs you will find four bedrooms, with the principle bedroom offering built in wardrobes, a dressing room and an en-suite, and finishing off with the family bedroom. Externally, the property boasts a garage, with off road parking to the front, and a lovingly maintained south facing garden to the rear.





GROUND FLOOR
839 sq.ft. (78.0 sq.m.) approx.

1ST FLOOR
619 sq.ft. (57.5 sq.m.) approx.



TOTAL FLOOR AREA : 1459 sq.ft. (135.5 sq.m.) approx.
Made with Metropix ©2024

FAQs

Postcode for SatNav: PE19 7LF
 Wat3words location: ///plates.yoursself.node
 Property Built: 1974
 Council tax: E
 EPC: C
 Vendors onward movements: Downsizing locally
 Primary catchment: Crosshall
 Secondary catchment: Longsands
 Water meter: Yes
 Loft boarded: Yes with Ladder

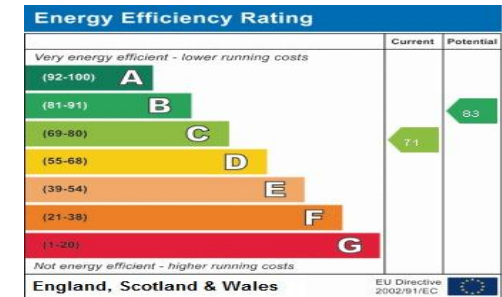
Please note we have not tested any apparatus, fixtures, fittings, or services. Interested parties must undertake their own investigation into the working order of these items. All measurements are approximate, and photographs provided for guidance only.

Need to sell your property? Please contact us to arrange your free, no obligation Market Appraisal.

For independent whole of market mortgage advice please call the team to book your appointment.

View all our properties at harveyrobinson.co.uk

Rated Exceptional in Best Estate Agent Guide 2024
 British Property Awards 2023 – Gold Winner
 5.0 Star Google Review Rating



Agents Note: Whilst every care has been taken to prepare these particulars, they are for guidance purposes only. All measurements are approximate and are for general guidance purposes only and whilst every care has been taken to ensure their accuracy, they should not be relied upon and potential buyers/tenants are advised to recheck the measurements

HARVEY ROBINSON

OFFICE ADDRESS

22 Market Square, St Neots,
Cambridgeshire, PE19 2AF

CONTACT

01480 454040
 stneots@harveyrobinson.co.uk
 www.harveyrobinson.co.uk