



£275,000

Hardwick Road
Eynesbury, PE19 2UE

- Two Bedrooms
- Well Presented
- Fitted Kitchen and Utility Room
- Enclosed Driveway Parking

- Close to Town and Amenities
- Large Bespoke Workshop/Hobby Space
- Potential to Extend/Develop
- No Chain



PROPERTY SUMMARY

harveyrobinson Estate Agents St. Neots are delighted to offer for sale this WELL PRESENTED, Two Bedroom, Semi-Detached BUNGALOW. Being well situated near Coneygeare Park and the Conservation Area ideal for riverside walks, as well as other local amenities with the town very close by making this a popular location. Briefly the property comprises Entrance Hall, Lounge, Fitted Kitchen, Utility Room, Two Bedrooms and a Family Bathroom. To the Front there is a good sized Front Garden with gated access to DRIVEWAY PARKING. To the Rear there is a small low maintenance Garden with a Large Timber Workshop . Hobby Space. Contact harveyrobinson St Neots to arrange a viewing.



GROUND FLOOR

ENTRANCE HALL

LOUNGE

KITCHEN

UTILITY ROOM

INNER HALL

MASTER BEDROOM

BEDROOM TWO

FAMILY BATHROOM





OUTSIDE

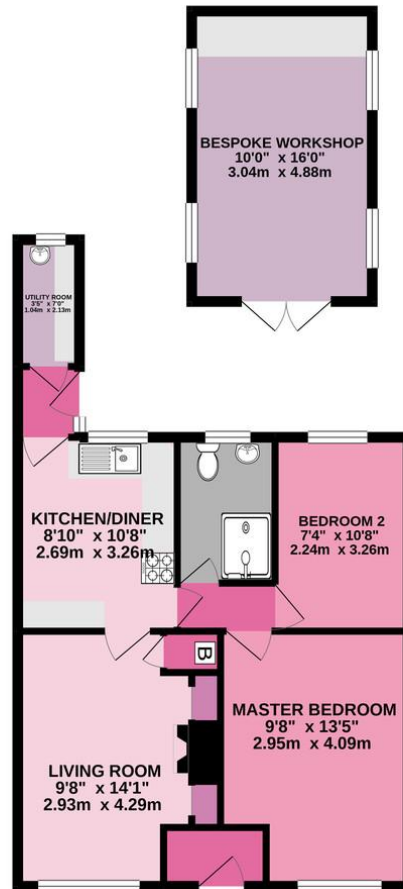
**FRONT GARDEN WITH ENCLOSED DRIVEWAY
PARKING**

**REAR GARDEN AND LARGE BESPOKE
WORKSHOP**





GROUND FLOOR
725 sq.ft. (67.3 sq.m.) approx.



TOTAL FLOOR AREA: 725 sq.ft. (67.3 sq.m.) approx.
Made with Metroplex ©2021

FAQs

Built: 1953

Onward Movements: Downsizing

Rear Garden: East Facing

Primary School: Eynesbury C of E

Secondary School: Ernulf Academy

Council Tax: Band B

Loft: Fitted Ladder, Boarded, With Light

Water Meter: Yes

Want to know how much your home is worth?
Please contact us to arrange your free Market Appraisal

For free whole of market mortgage advice please call the team to book your appointment

View all our properties at harveyrobinson.co.uk

Energy Efficiency Rating		
	Current	Potential
Very energy efficient - lower running costs		
(92-100) A		
(81-91) B		
(69-80) C		
(55-68) D		
(39-54) E		
(21-38) F		
(1-20) G		
Not energy efficient - higher running costs		
England, Scotland & Wales		
	EU Directive 2002/91/EC	

Agents Note: Whilst every care has been taken to prepare these particulars, they are for guidance purposes only. All measurements are approximate and are for general guidance purposes only and whilst every care has been taken to ensure their accuracy, they should not be relied upon and potential buyers/tenants are advised to recheck the measurements



OFFICE ADDRESS

22 Market Square, St Neots,
Cambridgeshire, PE19 2AF

CONTACT

01480 454040

stneots@harveyrobinson.co.uk

www.harveyrobinson.co.uk