



£250,000  
Buckley Road  
Eynesbury, PE19 2TR

- Two Bedroom End Terrace Home
- Walking Distance To Town Centre
- Enclosed Rear Garden
- Two Reception Rooms

- Downstairs Cloakroom
- Charming Character Features
- Gas Central Heating
- Close To Riverside Walks





## PROPERTY SUMMARY

harveyrobinson estate agents in St Neots are pleased to offer for sale this Two Bedroom End Terrace home. Located in the highly sought after area of Eynesbury, It is well situated near Coneygeare Park and the Conservation Area ideal for riverside walks, as well as being within walking distance of the historic market town of St Neots which boasts a vast array of shops, restaurants and amenities and has fantastic transport links via the A1, A428 and a trainline direct to London. Briefly the property comprises of Two Bedrooms, Lounge, Dining Room, Kitchen, Cloakroom, Bathroom, Loft Room and an enclosed rear garden. For more information and to arrange a viewing please contact harveyrobinson estate agent St Neots.



## GROUND FLOOR

LOUNGE

DINING ROOM

KITCHEN

CLOAKROOM







**FIRST FLOOR**

**LANDING**

**MASTER BEDROOM**

**BEDROOM TWO**

**BATHROOM**

**OUTSIDE**

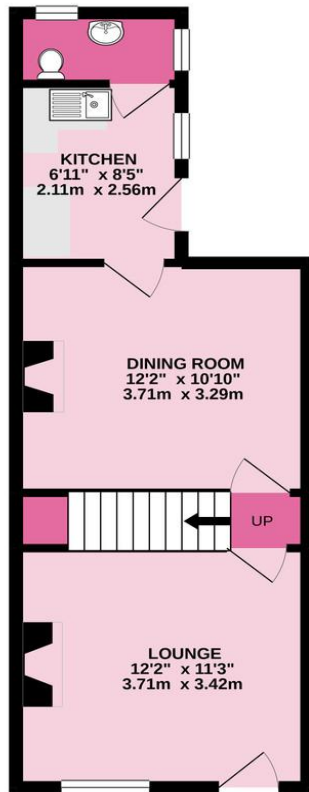
**REAR GARDEN**



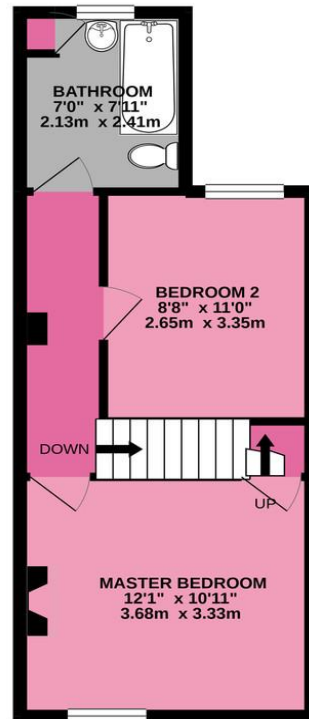




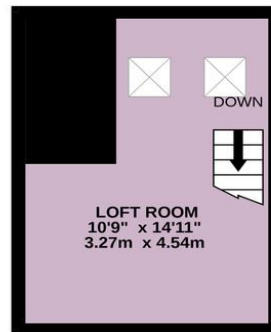
GROUND FLOOR  
369 sq.ft. (34.3 sq.m.) approx.



1ST FLOOR  
353 sq.ft. (32.8 sq.m.) approx.



2ND FLOOR  
134 sq.ft. (12.4 sq.m.) approx.



TOTAL FLOOR AREA : 856 sq.ft. (79.5 sq.m.) approx.  
Made with Metropix ©2020

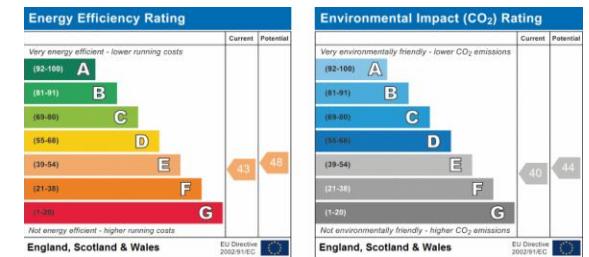
## FAQs

Primary School Catchment: Eynesbury C of E  
Secondary School Catchment: Emulf

Want to know how much your home is worth?  
Please contact us to arrange your free Market Appraisal

For free whole of market mortgage advice  
please call the team to book your appointment

View all our properties at [harveyrobinson.co.uk](http://harveyrobinson.co.uk)



Agents Note: Whilst every care has been taken to prepare these particulars, they are for guidance purposes only. All measurements are approximate and are for general guidance purposes only and whilst every care has been taken to ensure their accuracy, they should not be relied upon and potential buyers/tenants are advised to recheck the measurements



### OFFICE ADDRESS

22 Market Square, St Neots,  
Cambridgeshire, PE19 2AF

### CONTACT

01480 454040  
[stneots@harveyrobinson.co.uk](mailto:stneots@harveyrobinson.co.uk)  
[www.harveyrobinson.co.uk](http://www.harveyrobinson.co.uk)