



0/1 24 NATIONAL COURT

GLASGOW

www.corumproperty.co.uk



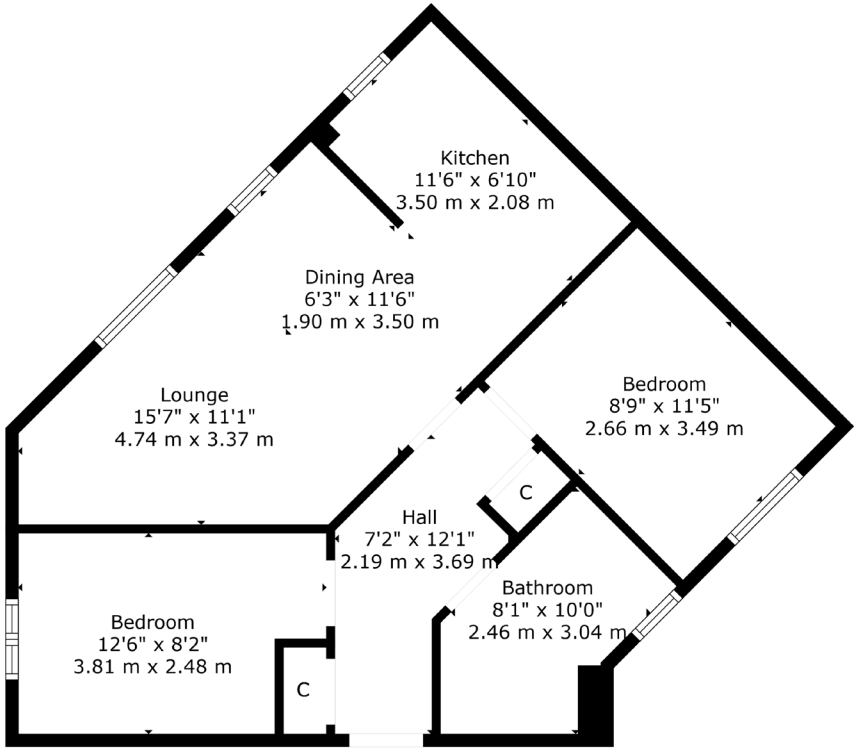
2 | BEDROOMS
1 | BATHROOM
1 | PUBLIC ROOM

Enjoying a peaceful yet highly convenient location, this fantastic ground floor apartment offers an excellent choice for a variety of buyers.

- Ground floor apartment.
- Bright and spacious accommodation.
- Fantastic storage throughout.
- Residents parking.
- Popular location with easy access to amenities and transport links.

Amenities

‘The Boulevard’ is a fantastic new residential development by Persimmon Homes boasting great motorway network links with easy accessibility as the development is ideally positioned off junction 2 of the M77 and is conveniently located for two major shopping centres Braehead near Renfrew and Silverburn shopping centre within walking distance. Furthermore, the commuter has convenient transport links to the Clyde Tunnel and Glasgow International Airport providing access to destinations further afield.



Sat Nav:
24 National Court, Glasgow G43 1AR

CC0856

*All measurements and distances are approximate.
Floorplans are for illustration purposes and may not be to scale.

For the full home report visit
www.corumproperty.co.uk



WE'RE **SOLD** ON
YOUR FUTURE



Corum Clarkston & Netherlee
5 Helena Place, Clarkston, G76 7RB

Tel: 0141 648 6000

Email: clarkston@corumproperty.co.uk

www.corumproperty.co.uk