



**51 HEATHCLIFF DRIVE**

JACKTON

[www.corumproperty.co.uk](http://www.corumproperty.co.uk)





5 | BEDROOMS

3 | BATHROOMS

2 | PUBLIC ROOMS

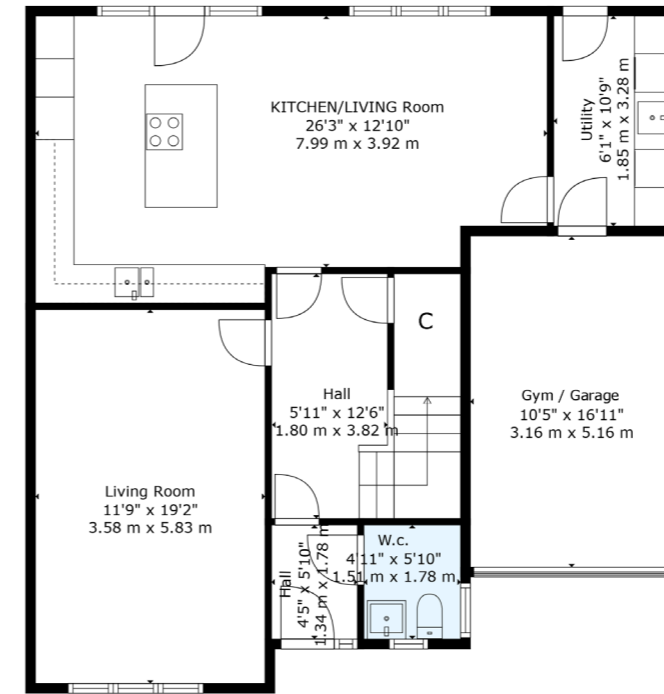
**An impressive, detached villa set with landscaped garden grounds.**

This modern detached villa constructed by respected builder Cala Homes, enjoys a lovely position within this sought after development. Set within landscaped garden grounds and with the significant benefit of an outdoor gym/Home office the subjects are presented in beautiful condition throughout.

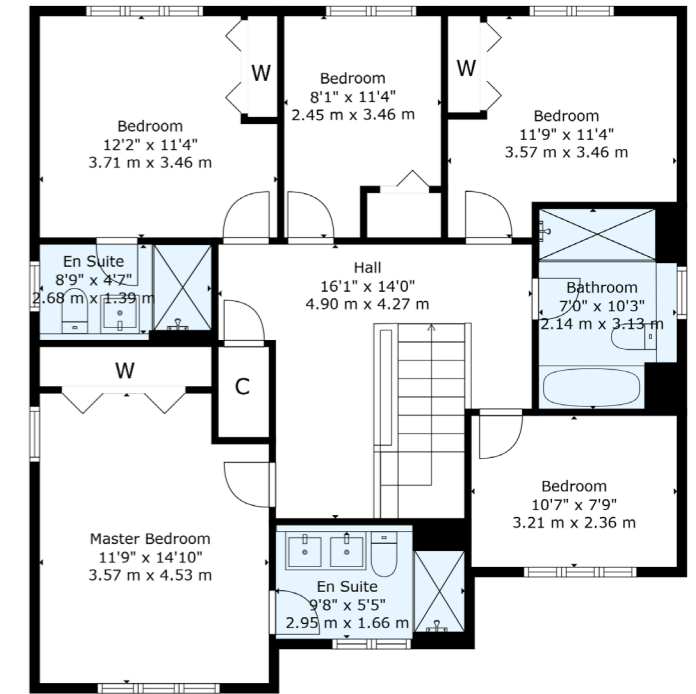
Ground floor accommodation extends to entrance vestibule with WC adjacent, lovely reception hallway with storage adjacent, generous formal lounge with feature media wall, fantastic open plan kitchen / dining / living area with bi fold doors to garden, separate laundry / utility room with access into Garage which is currently being used as a Gym. Upstairs a bright and spacious landing area gives access to generous principal bedroom with fitted storage and luxurious ensuite shower room, second double bedroom with fitted storage and en-suite shower room, three good double bedrooms and main family bathroom with separate shower enclosure. Specification includes gas central heating, double glazing, Laufen sanitary ware, Porcelanosa tiling, Amtico flooring, quality integrated appliances along with complimentary worktops in the Kitchen and overall, the subjects are beautifully presented and decorated throughout.

Externally the property is set within private landscaped rear garden grounds with patio, astro turf and lovely sunken seating / firepit area. Significant benefit of outbuilding with bi-fold doors fitted with power and light, which would make a fantastic gym / home office or entertaining space. Monoblock driveway providing ample vehicular parking.





Floor 1



Floor 2



Jackton enjoys a semi-rural feel with the villages of Thorntonhall and Eaglesham a short distance away. The neighbouring conservation village of Eaglesham offers an excellent village primary school, much admired Eglinton Arms Hotel and Jackton is well served by nearby motorway links that provide direct access to city centre, Ayrshire and Lanarkshire. There are plentiful outdoor and equestrian pursuits found nearby in addition to excellent walking and cycling. Whitelee Wind Farm is a fantastic visitor centre and further amenities include numerous golf courses found nearby and road links via the Glasgow South Orbital give access to the city centre and Ayrshire. East Kilbride offers some fantastic retail and leisure facilities. Pre-schooling, primary and secondary schooling is also found nearby.

**CC0805** | Sat Nav: 51 Heathcliff Drive, Jackton, Glasgow, G75 8ZA

For the full home report visit [www.corumproperty.co.uk](http://www.corumproperty.co.uk)

\* All measurements and distances are approximate Floorplans are for illustration purposes and may not be to scale.



WE'RE **SOLD** ON  
YOUR FUTURE



Corum Clarkston & Netherlee  
5 Helena Place, Clarkston, G76 7RB

Tel: 0141 648 6000

Email: [clarkston@corumproperty.co.uk](mailto:clarkston@corumproperty.co.uk)

[www.corumproperty.co.uk](http://www.corumproperty.co.uk)