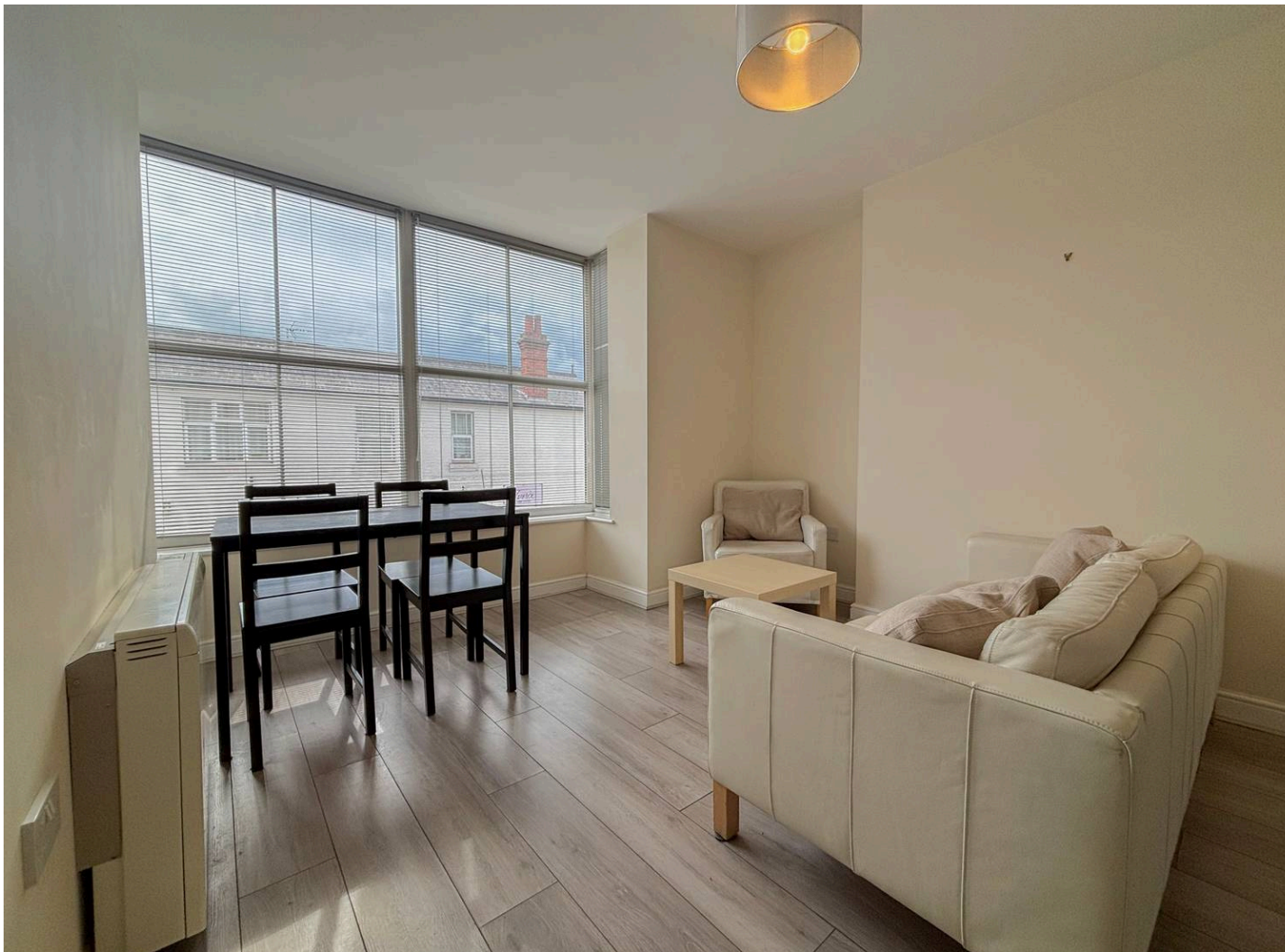




Flat 2, 93A Warwick Road, Kenilworth
£900 pcm



Flat 2

93A Warwick Road, Kenilworth

This modern two bedroom 1st floor apartment is located in the town centre, with the train station, bus stops and amenities all just a short walk away. The property comprises in brief entrance/hallway, open plan kitchen/lounge with white goods included, two bedrooms and a family bathroom.

Council Tax band: B

Tenure: Freehold

EPC Energy Efficiency Rating: C

EPC Environmental Impact Rating: D

- Modern two bedroom apartment
- Short walk to the train station, bus stops and amenities
- White goods included
- Modern bathroom with shower over bath
- Furnished
- Town centre location
- Open plan kitchen/living room
- 1st Floor apartment
- Great communal garden with bike shed
- Available now

