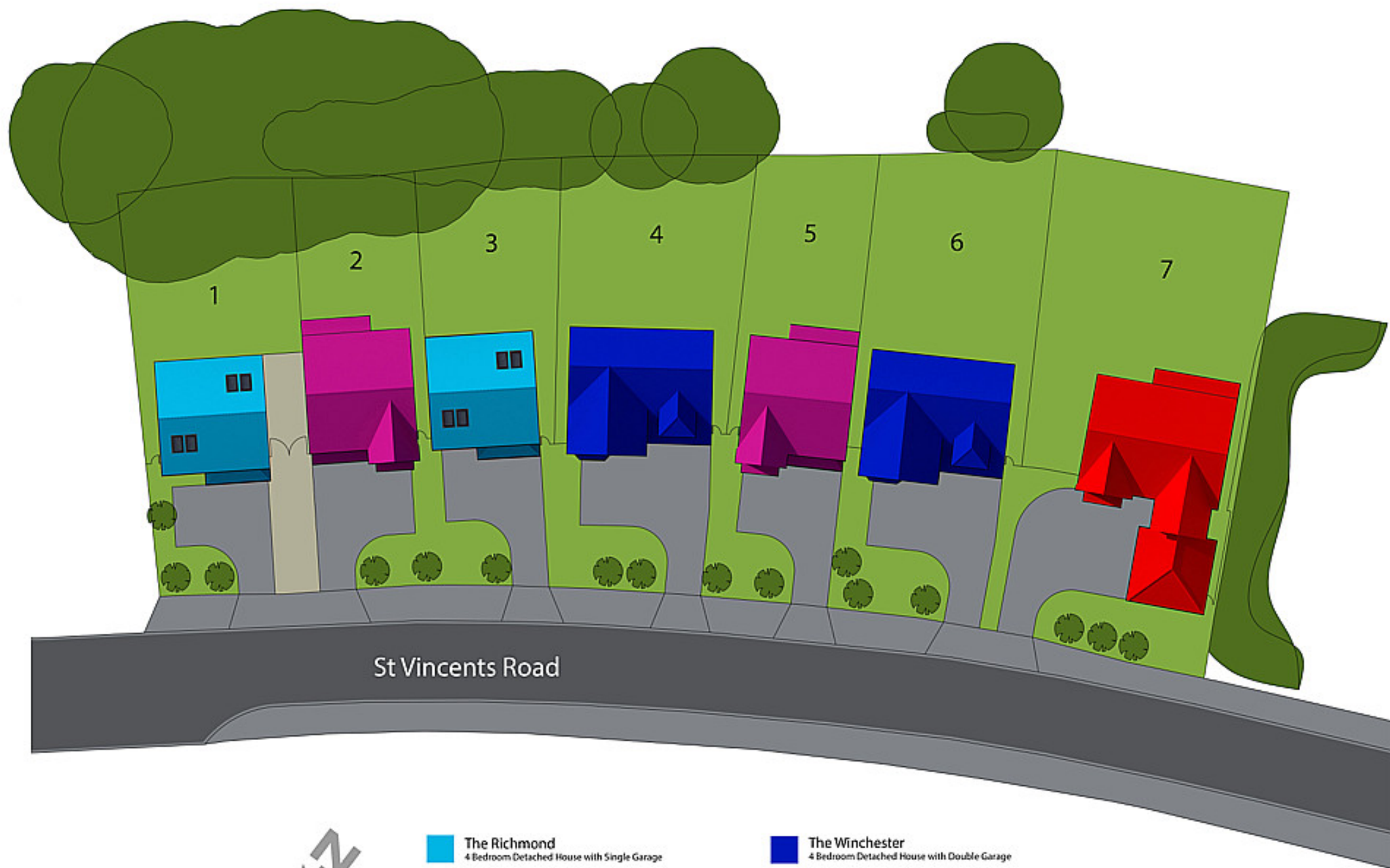




CENTURY 21
Liverpool South

OFFERS OVER BETWEEN £385,000 AND
£485,000



St Vincents Road



The Richmond
4 Bedroom Detached House with Single Garage

The Epsom
4 Bedroom Detached House with Single Garage

The Winchester
4 Bedroom Detached House with Double Garage

The Ascot
5 Bedroom Detached House with Double Garage



PROPERTY
ST. VINCENTS COURT, FULWOOD PRESTON PR2



Selection of Beautiful New Builds

Enjoying an attractive setting in the popular location of Fulwood, St. Vincent's Court is an exclusive new development of four and five bedroom homes featuring a level of luxury and space rarely found in today's new homes market. The properties enjoy generous plots and ample parking to supplement the garage space. The development enjoys easy access to Preston town centre and the M6 motorway.

The Epsom. 4 bedroom detached home with single garage. £385,000

The stylish design provides spacious yet easy-to-manage living within a beautifully balanced layout. Mealtimes can be enjoyed to the full in a large dining kitchen which adjoins a utility providing external access to the side of the property. Upstairs, a luxurious family bathroom is supplemented by an en-suite to one of the four good-sized bedrooms.

The Richmond. 5 bedroom detached home with single garage. £475,000

Planned over three spacious storeys, this magnificent design is superbly equipped for families and entertaining guests. The luxurious dining kitchen features bi-fold doors opening out onto the garden to seamlessly merge the interiors with the exterior. The property includes en-suites to two bedrooms and the master bedroom also benefits from a walk-in dressing area.

The Winchester. 5 bedroom detached home with double garage. £485,000

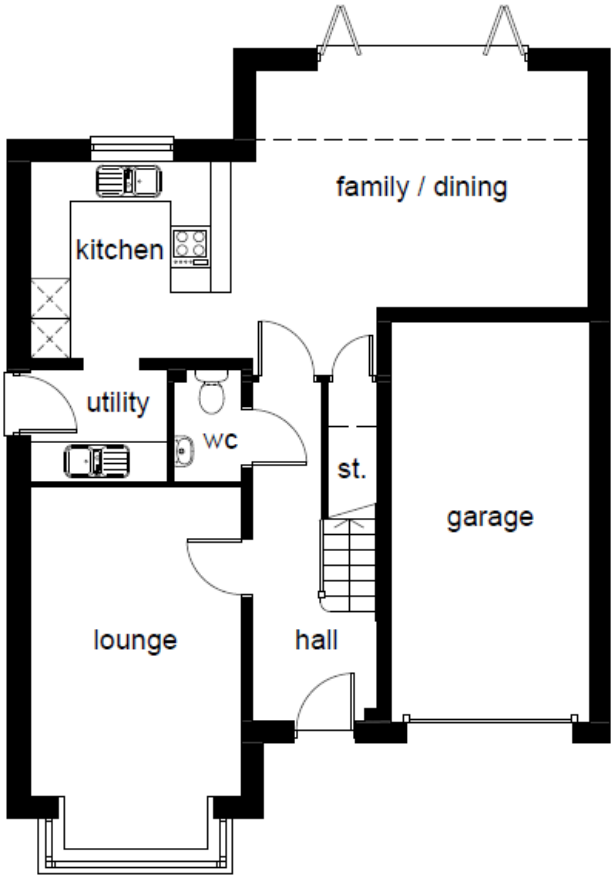
This outstanding design displays luxurious touches at every turn. There is a substantial open-plan space within a large, airy dining kitchen whilst the attractive lounge features an elegant bay window. Upstairs, the second bedroom provides comfort for overnight guests with one of two en-suite bathrooms included in the property in addition to the luxurious house bathroom.



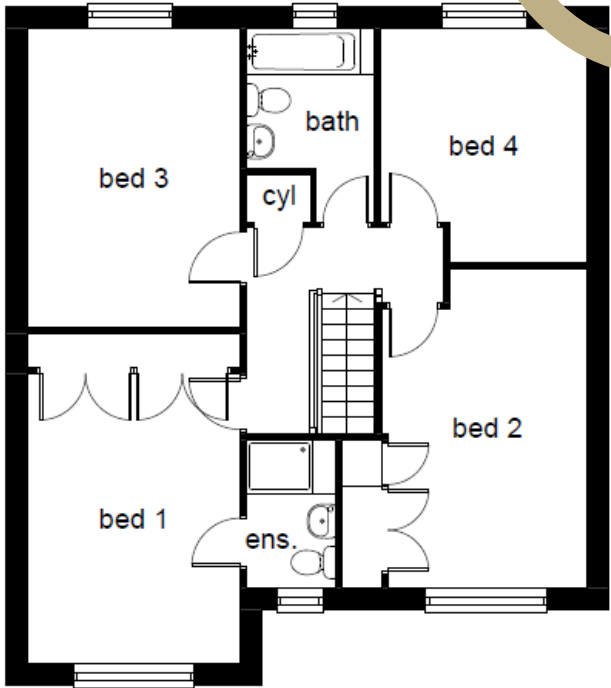
ST. VINCENTS COURT, FULWOOD
PRESTON PR2

Utilities:

Internal Area:



GROUND	mm	feet
Family / Dining	4965 x 3540	16'3" x 11'7"
Kitchen	3375 x 2950	11'0" x 9'8"
Utility	2050 x 1675	6'8" x 5'5"
WC	1025 x 1675	3'4" x 5'5"
Lounge	3165 x 5385 (into bay)	10'4" x 17'8"



FIRST	mm	feet
Bed 1	3165 x 4910	10'4" x 16'1"
Ensuite	1335 x 2205	4'4" x 7'2"
Bed 2	3055 x 4760	10'0" x 15'7"
Bed 3	3165 x 4465	10'4" x 14'7"
Bed 4	3070 x 3485	10'0" x 11'5"
Bathroom	1925 x 2085	6'3" x 6'10"





CENTURY 21
Liverpool South

33 Allerton Road Woolton, LIVERPOOL, L257RE

T:
E: liverpoolsouth@century21uk.com